

## List of pages in this Trip Kit

Trip Kit Index

Airport Information For UGSB

Terminal Charts For UGSB

Revision Letter For Cycle 08-2012

Change Notices

Notebook

## General Information

Location: Batumi GEO  
IATA Code: BUS  
Lat/Long: N41° 36.6' E041° 36.0'  
Elevation: 108 ft

Airport Use: Public  
Magnetic Variation: 6.1°E

Fuel Types: Jet A-1  
Repair Types: Major Airframe, Major Engine  
Customs: Yes  
Airport Type: IFR  
Landing Fee: Yes  
Control Tower: Yes  
Jet Start Unit: No  
LLWS Alert: No  
Beacon: Yes

Sunrise: 0227 Z  
Sunset: 1559 Z,

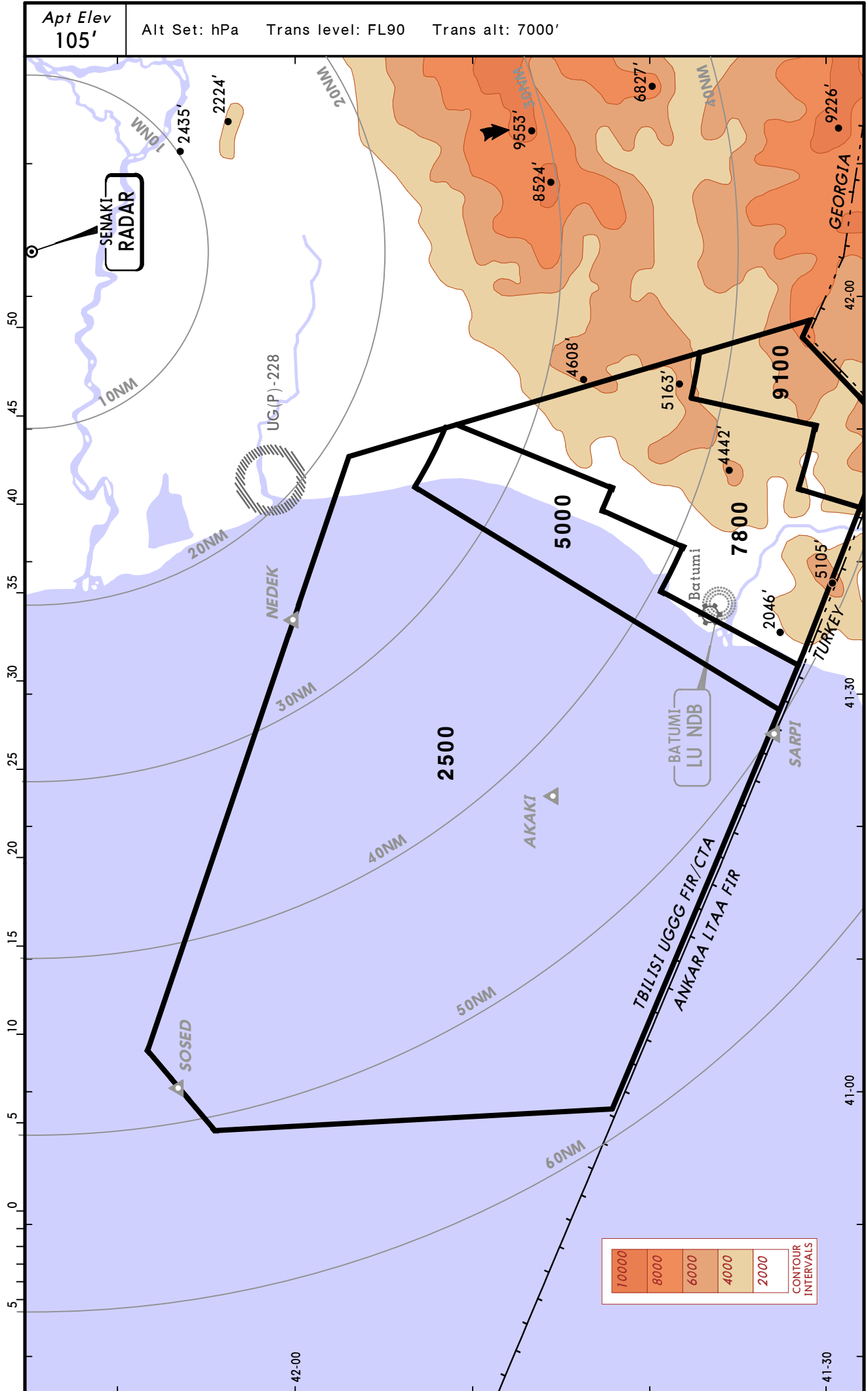
## Runway Information

Runway: 13  
Length x Width: 8202 ft x 148 ft  
Surface Type: asphalt  
TDZ-Elev: 89 ft  
Lighting: Edge, ALS, Centerline  
Stopway: 197 ft

Runway: 31  
Length x Width: 8202 ft x 148 ft  
Surface Type: asphalt  
TDZ-Elev: 108 ft  
Lighting: Edge, Centerline  
Stopway: 197 ft

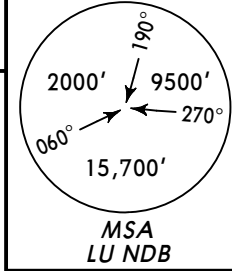
## Communication Information

Batumi Tower 118.6  
Batumi Approach Control 124.425



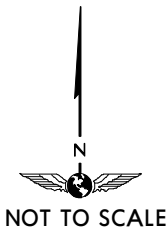
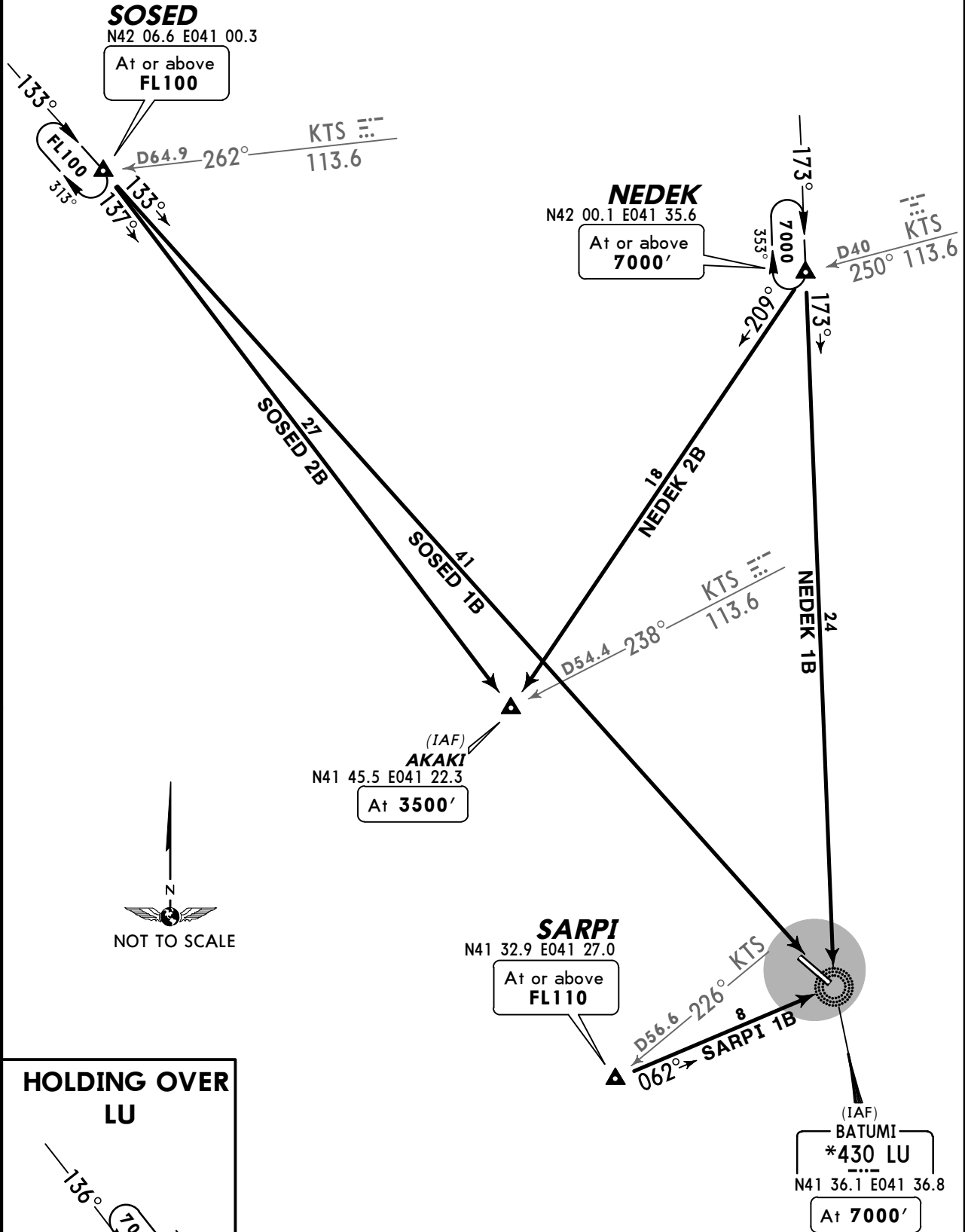
Apt Elev  
105'

Alt Set: hPa Trans level: FL90 Trans alt: 7000'

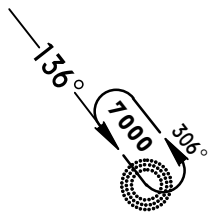


NEDEK 1B [NEDE1B], NEDEK 2B [NEDE2B]  
SARPI 1B [SARPI1B]  
SOSED 1B [SOSE1B], SOSED 2B [SOSE2B]  
RWY 13 ARRIVALS

**SPEED** MAX 250 KT BELOW FL110 WITHIN BATUMI TMA

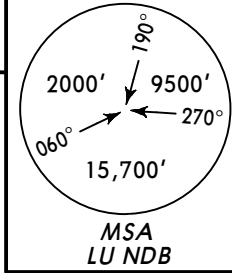


**HOLDING OVER  
LU**



Apt Elev  
105'

Trans level: FL90 Trans alt: 7000'



**NEDEK 1A [NEDE1A]**  
**SARPI 1A [SARPI1A] ①, SARPI 2A [SARPI2A] ②**  
**SARPI 3A [SARPI3A] ①, SARPI 4A [SARPI4A] ②**  
**SOSED 1A [SOSE1A]**  
**RWY 31 DEPARTURES**

**SPEED** MAX 250 KT BELOW FL110  
 WITHIN BATUMI TMA

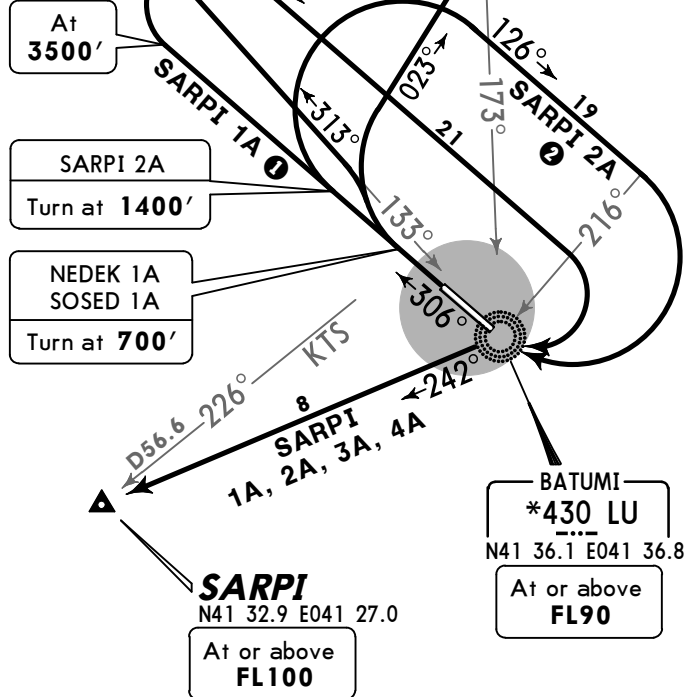
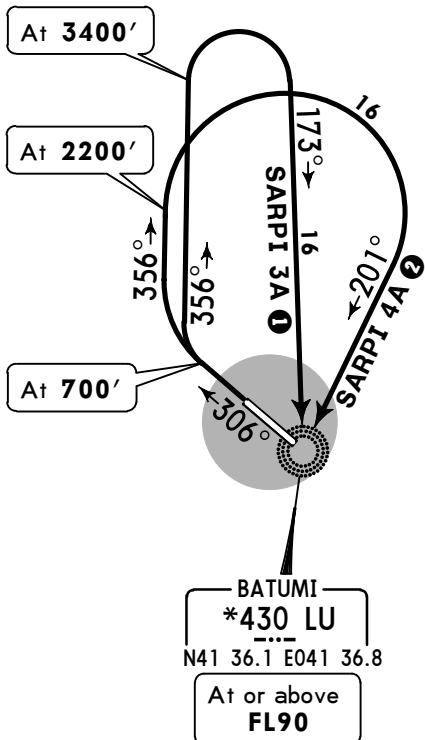
**SOSED**  
 N42 06.6 E041 00.3  
 At or above  
**FL90**

**NEDEK**  
 N42 00.1 E041 35.6  
 At or above  
**6000**

- ① CAT A & B
- ② CAT C & D

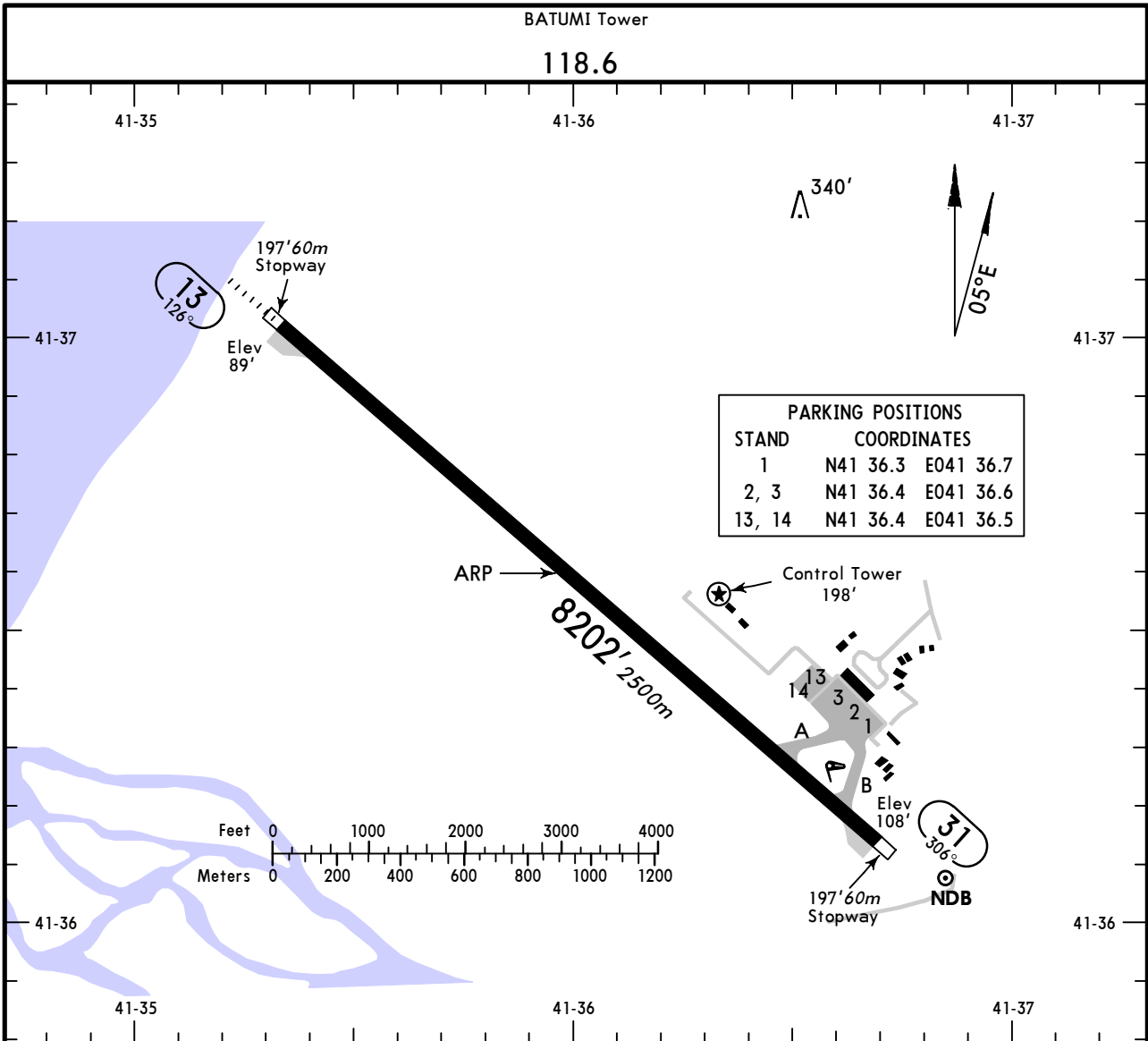


**INITIAL CLIMB  
 FOR  
 SARPI 3A & 4A**



**SARPI 3A, 4A**  
 These SIDs require a minimum climb gradient of  
 of  
 243' per NM (4%).

Gnd speed-KT	75	100	150	200	250	300
243' per NM	304	405	608	810	1013	1215



ADDITIONAL RUNWAY INFORMATION

RWY		USABLE LENGTHS			WIDTH
		Threshold	Landing Beyond Glide Slope	TAKE-OFF	
13	HIRL (60m) CL (30m) HIALS PAPI-L (angle 3.0°)		7291' 2222m	NA ①	148'
31	HIRL (60m) CL (30m)	NA ①			45m

① Permitted DAY only: For acft with MTOW not exceeding 5700kg.

JAR-OPS

TAKE-OFF ①

	Rwy 31			
	LVP must be in force			
	RL & CL	RCLM (DAY only) or RL	RCLM (DAY only) or RL	NIL (DAY only)
A				
B	200m	250m	400m	500m
C				
D	250m	300m		

① Operators applying U.S. Ops Specs: CL required below 300m.

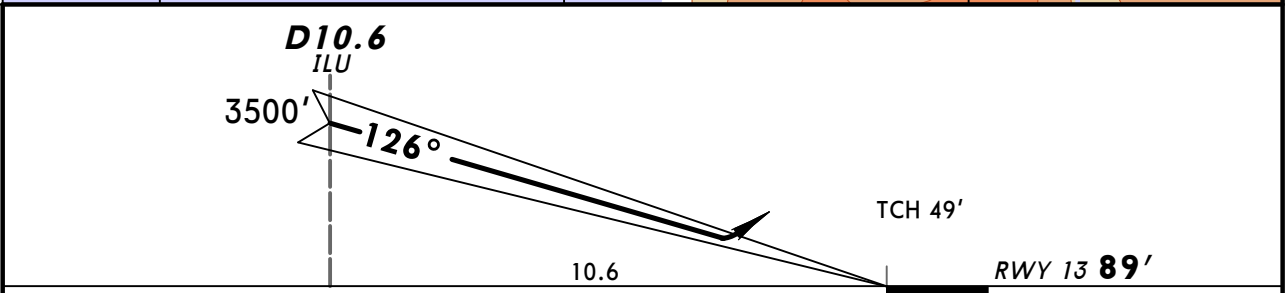
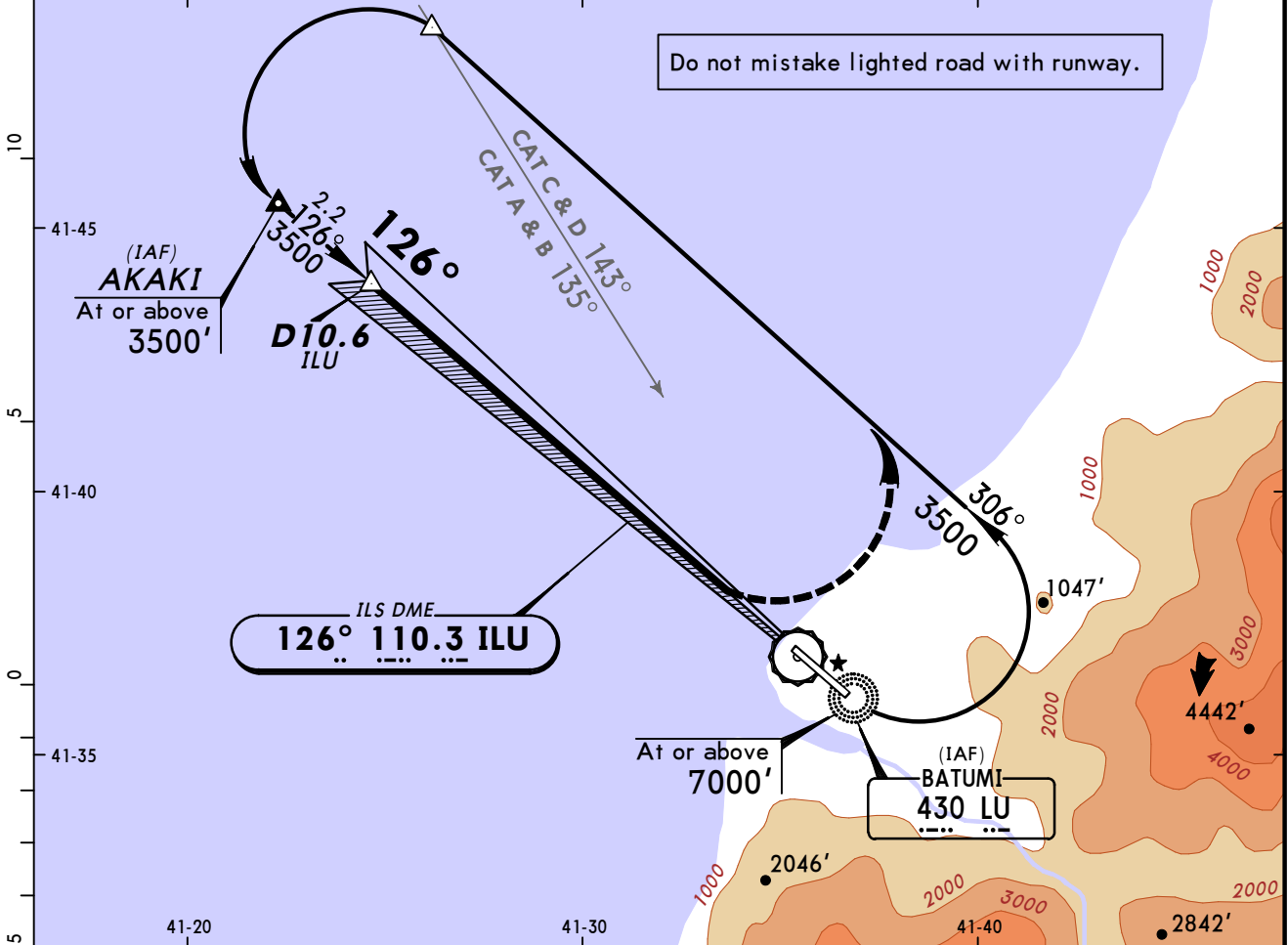
STRAIGHT-IN RWY		A	B	C	D
13	ILS	<b>649'</b> (560') <b>R1500m</b>	<b>649'</b> (560') <b>R1500m</b>	<b>669'</b> (580') <b>C2400m</b>	<b>669'</b> (580') <b>C2400m</b>
	LOC	NOT AUTH	NOT AUTH	NOT AUTH	NOT AUTH

**TAKE-OFF RWY 31**

LVP must be in force					
	RL, CL & mult. RVR req	RL & CL	RCLM (DAY only) or RL	RCLM (DAY only) or RL	NIL (DAY only)
A					
B	<i>150m</i>	<i>200m</i>	<i>250m</i>	<i>400m</i>	<i>500m</i>
C					
D	<i>200m</i>	<i>250m</i>	<i>300m</i>		

BATUMI Approach 124.42			BATUMI Tower 118.6		<p>MSA LU NDB</p>
LOC ILU <b>110.3</b>	Final Apch Crs <b>126°</b>	GS <b>D10.6 ILU</b> 3500' (3411')	ILS DA(H) Refer to Minimums	Apt Elev 108' RWY <b>89'</b>	
<p><b>MISSED APCH: Turn LEFT onto heading 306° climbing to 3500' and as directed.</b></p>					

Alt Set: hPa Rwy Elev: 3 hPa Trans level: FL 90 Trans alt: 7000'  
 1. ILS DME reads zero at rwy 13 threshold. 2. Procedure restricted to MAX 230 KT.



Gnd speed-Kts	70	90	100	120	140	160
GS 3.00°	372	478	531	637	743	859

**HIALS**  
**3500'** **306°**  
 PAPI  
 LT on hdg

<b>JAR-OPS</b>			STRAIGHT-IN LANDING RWY 13		
ILS Missed approach climb grad mim 3.0% DA(H) AB: <b>649'</b> (560') CD: <b>669'</b> (580')			LOC (GS out)		
FULL		ALS out			
A					
B					
C	RVR 1000m	RVR 1200m	NOT AUTHORIZED		
D					



## Chart changes since cycle 07-2012

ADD = added chart, REV = revised chart, DEL = deleted chart.

ACT	PROCEDURE IDENT	INDEX	REV DATE	EFF DATE
-----	-----------------	-------	----------	----------

**BATUMI, (BATUMI - UGSB)**

## **TERMINAL CHART CHANGE NOTICES**

### **No Chart Change Notices for Airport UGSB**