

## List of pages in this Trip Kit

Trip Kit Index

Airport Information For UKDD

Terminal Charts For UKDD

Revision Letter For Cycle 08-2012

Change Notices

Notebook

## General Information

Location: Dnipropetrovs'k Ukr  
IATA Code: DNK  
Lat/Long: N48° 21.4' E035° 06.0'  
Elevation: 482 ft

Airport Use: Public  
Magnetic Variation: 7.2°E

Fuel Types: Jet A-1  
Repair Types: Minor Airframe, Minor Engine  
Customs: Yes  
Airport Type: IFR  
Landing Fee: Yes  
Control Tower: Yes  
Jet Start Unit: No  
LLWS Alert: No  
Beacon: No

Sunrise: 0241 Z  
Sunset: 1636 Z,

## Runway Information

Runway: 08  
Length x Width: 9377 ft x 144 ft  
Surface Type: concrete  
TDZ-Elev: 454 ft  
Lighting: Edge, ALS

Runway: 26  
Length x Width: 9377 ft x 144 ft  
Surface Type: concrete  
TDZ-Elev: 473 ft  
Lighting: Edge, ALS

## Communication Information

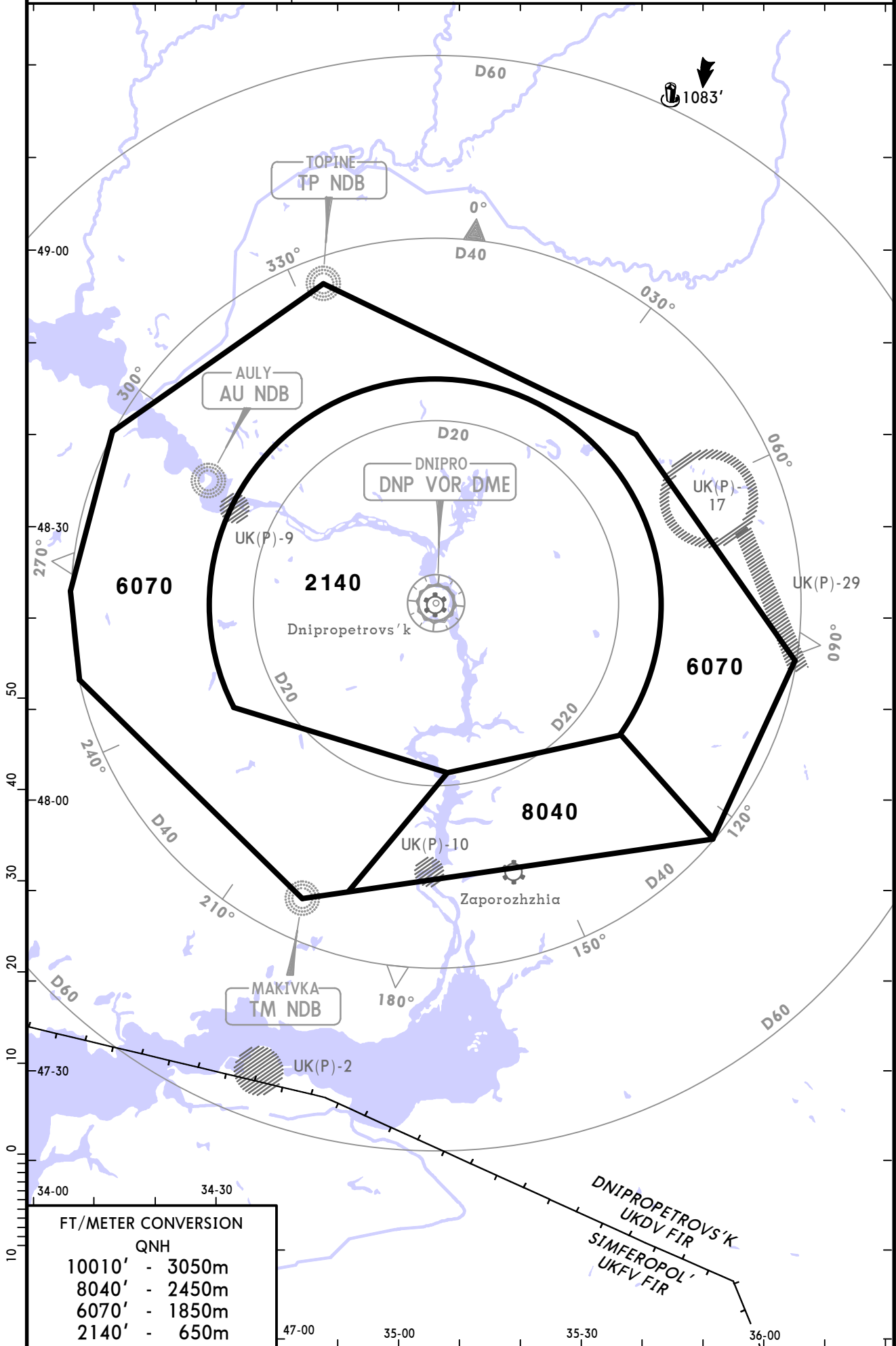
Dnipro Tower 118.6  
Dnipro Ground Control 121.8  
Dnipropetrovs'k Radar Approach Control 119.4

# UKDD/DNK DNIPROPETROVS'K

DNIPRO  
Radar (APP)  
**119.4**

*Apt Elev*  
**482'**

Alt Set: hPa (MM on request)  
Trans level: By ATC Trans alt: 10010'  
This chart may only be used for cross-checking of altitudes  
assigned while under radar control.

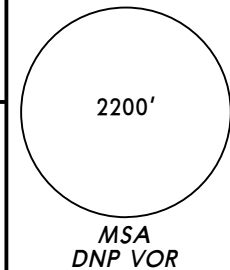


FT/METER CONVERSION	
QNH	
10010'	- 3050m
8040'	- 2450m
6070'	- 1850m
2140'	- 650m

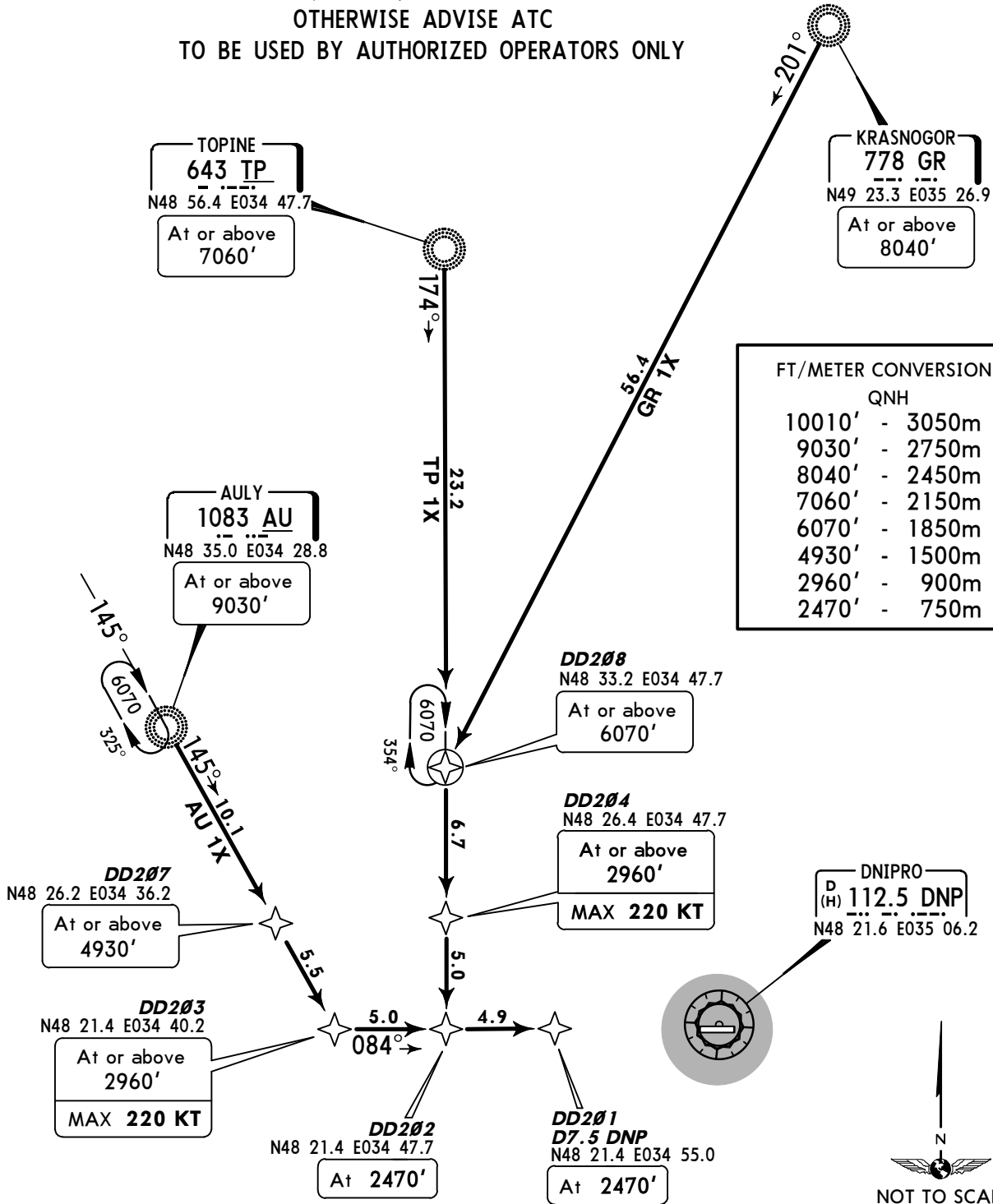
CHANGES: Sector revised; facility names.

Apt Elev  
482'

Alt Set: hPa (MM on request)  
Trans level: By ATC Trans alt: 10010'  
EXPECT ILS or NDB approach on DD201.



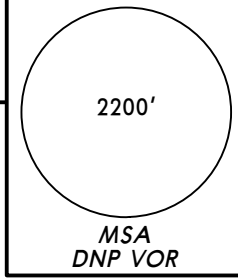
**AULY ONE X-RAY (AU 1X)  
KRASNOGOR ONE X-RAY (GR 1X)  
TOPINE ONE X-RAY (TP 1X)  
RWY 08 RNAV ARRIVALS**  
RNAV 1 (GNSS)  
RNAV-1 (P-RNAV) APPROVAL REQUIRED  
OTHERWISE ADVISE ATC  
TO BE USED BY AUTHORIZED OPERATORS ONLY



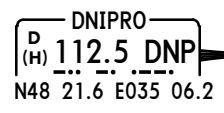
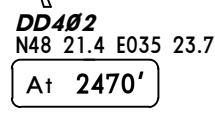
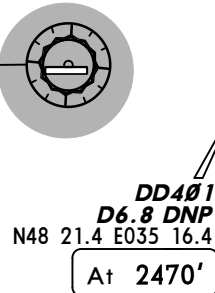
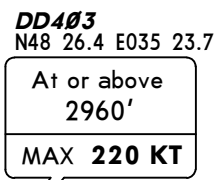
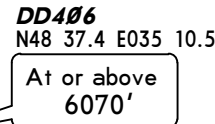
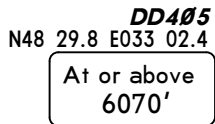
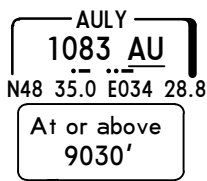
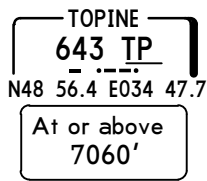
STAR	ROUTING
<b>AU 1X</b>	AU (9030'+) - DD207 (4930'+) - DD203 (2960'+; K220-) - DD202 (2470') - DD201 (2470').
<b>GR 1X</b>	GR (8040'+) - DD208 (6070'+) - DD204 (2960'+; K220-) - DD202 (2470') - DD201 (2470').
<b>TP 1X</b>	TP (7060'+) - DD208 (6070'+) - DD204 (2960'+; K220-) - DD202 (2470') - DD201 (2470').

Apt Elev  
482'

Alt Set: hPa (MM on request)  
Trans level: By ATC Trans alt: 10010'  
EXPECT ILS or NDB approach on DD401.



**AULY ONE ZULU (AU 1Z)**  
**KRASNOGOR ONE ZULU (GR 1Z)**  
**TOPINE ONE ZULU (TP 1Z)**  
**RWY 26 RNAV ARRIVALS**  
RNAV 1 (GNSS)  
RNAV-1 (P-RNAV) APPROVAL REQUIRED  
OTHERWISE ADVISE ATC  
TO BE USED BY AUTHORIZED OPERATORS ONLY



FT/METER CONVERSION

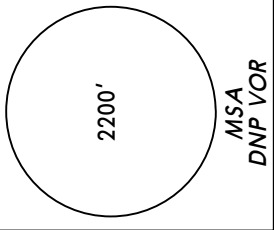
FT	METER
10010'	3050m
9030'	2750m
8040'	2450m
7060'	2150m
6070'	1850m
2960'	900m
2470'	750m



STAR	ROUTING
<b>AU 1Z</b>	AU (9030'+) - DD405 (6070'+) - DD403 (2960'+; K220-) - DD402 (2470') - DD401 (2470').
<b>GR 1Z</b>	GR (8040'+) - DD406 (6070'+) - DD403 (2960'+; K220-) - DD402 (2470') - DD401 (2470').
<b>TP 1Z</b>	TP (7060'+) - DD406 (6070'+) - DD403 (2960'+; K220-) - DD402 (2470') - DD401 (2470').

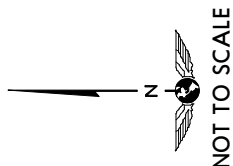
Apt Elev  
**482'**

Alt Set: hPa (MM on request)  
Trans level: By ATC Trans alt: 10010'  
EXPECT ILS or NDB approach on DD201.



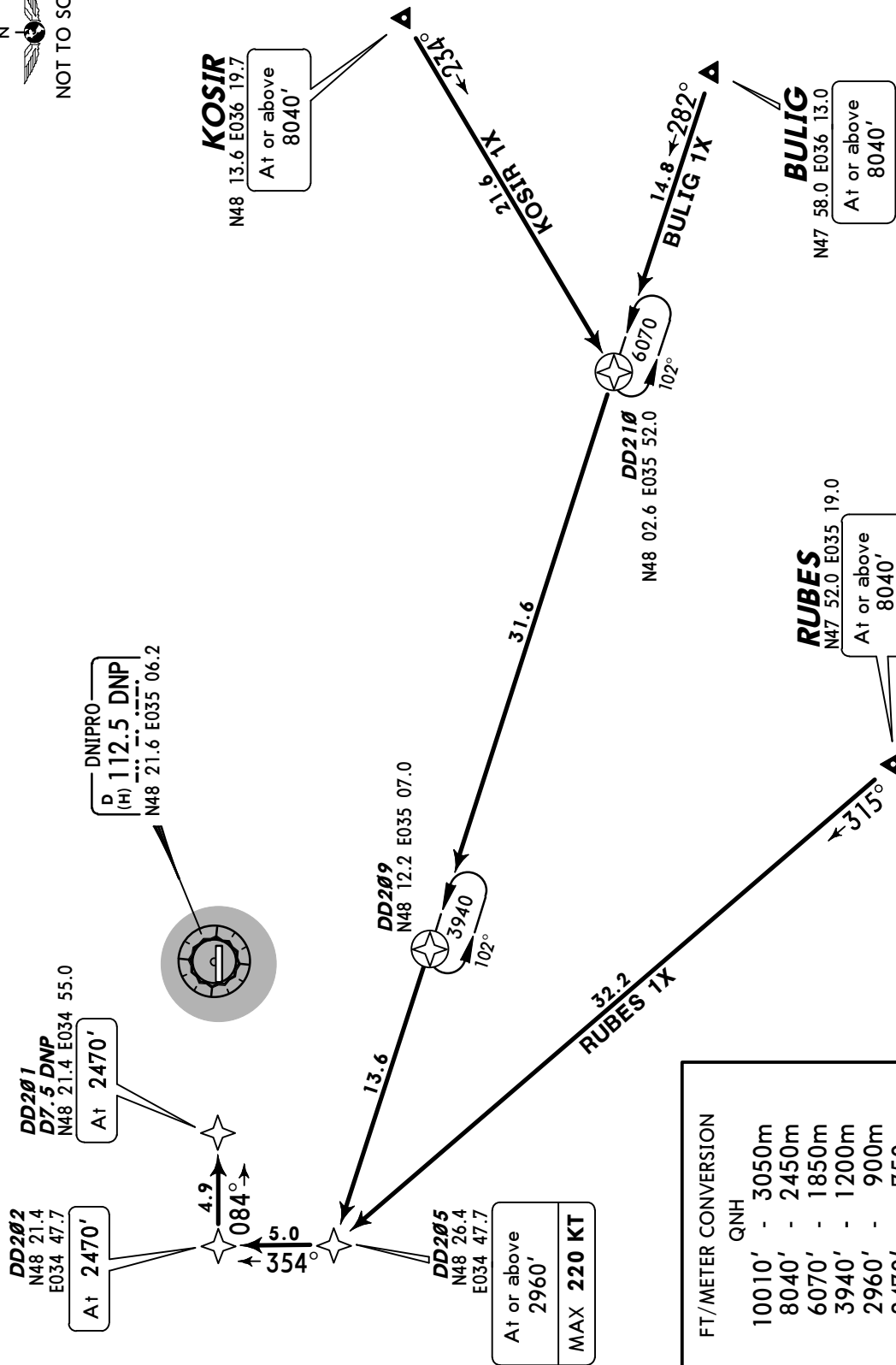
**BULIG ONE X-RAY (BULIG 1X) [BULI1X]  
KOSIR ONE X-RAY (KOSIR 1X) [KOSI1X]  
RUBES ONE X-RAY (RUBES 1X) [RUBE1X]  
RWY 08 RNAV ARRIVALS**

RNAV 1 (GNSS)  
RNAV-1 (P-RNAV) APPROVAL REQUIRED  
OTHERWISE ADVISE ATC  
TO BE USED BY AUTHORIZED OPERATORS ONLY



**ROUTING**

STAR	ROUTING
BULIG 1X	BULIG (8040'+) - DD210 - DD209 - DD205 (2960'+; K220-) - DD202 (2470') - DD201 (2470').
KOSIR 1X	KOSIR (8040'+) - DD210 - DD209 - DD205 (2960'+; K220-) - DD202 (2470') - DD201 (2470').
RUBES 1X	RUBES (8040'+) - DD205 (2960'+; K220-) - DD202 (2470') - DD201 (2470').

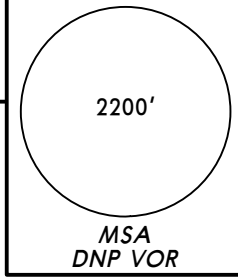


FT/METER CONVERSION

QNH	FT	METER
10010'	-	3050m
8040'	-	2450m
6070'	-	1850m
3940'	-	1200m
2960'	-	900m
2470'	-	750m

Apt Elev  
482'

Alt Set: hPa (MM on request)  
Trans level: By ATC Trans alt: 10010'  
EXPECT ILS or NDB approach on DD401.



BULIG ONE ZULU (BULIG 1Z) [BULI1Z]  
KOSIR ONE ZULU (KOSIR 1Z) [KOSI1Z]  
RUBES ONE ZULU (RUBES 1Z) [RUBE1Z]

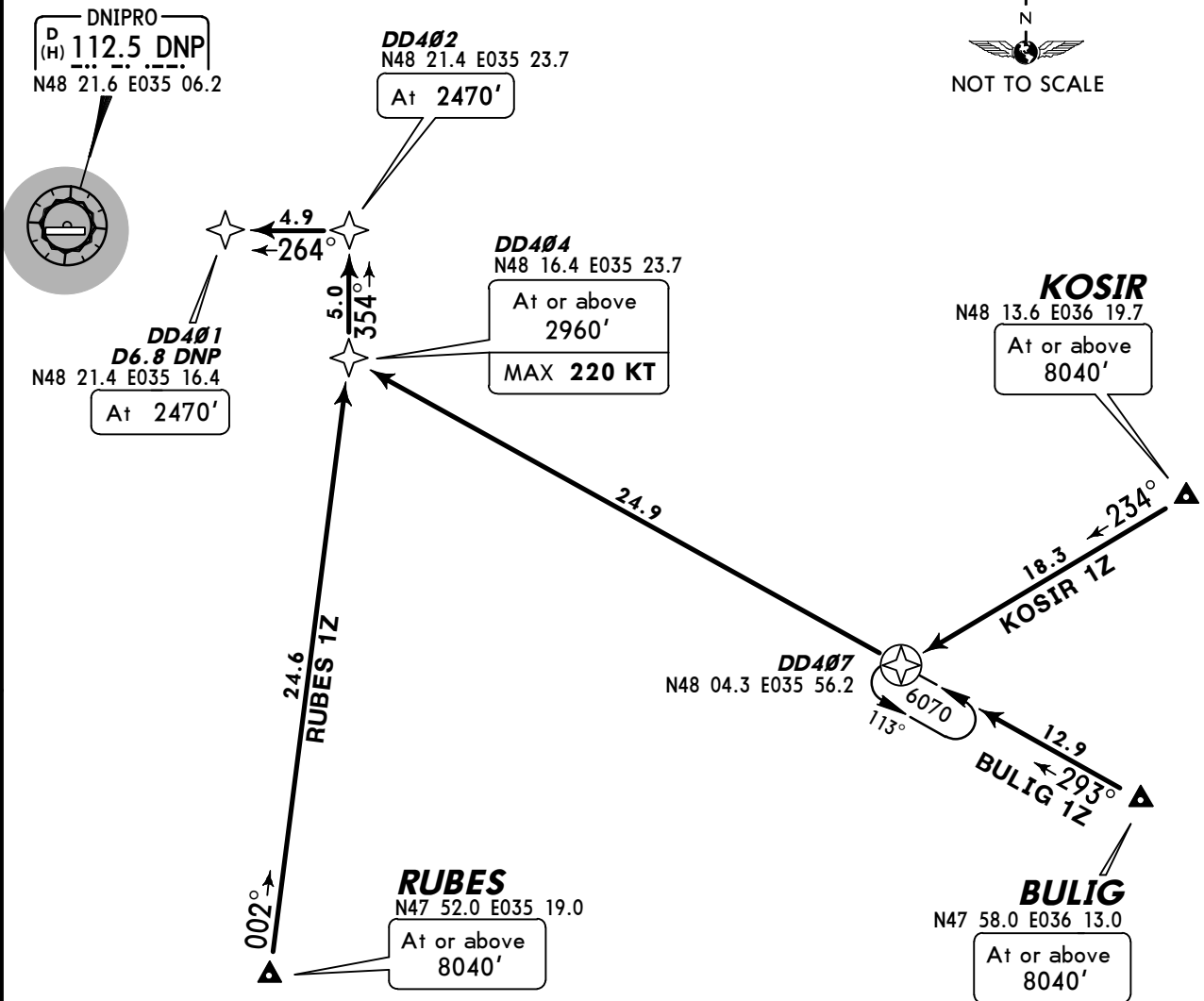
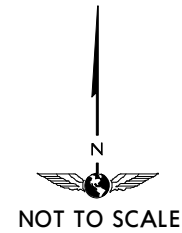
**RWY 26 RNAV ARRIVALS**

RNAV 1 (GNSS)

RNAV-1 (P-RNAV) APPROVAL REQUIRED

OTHERWISE ADVISE ATC

TO BE USED BY AUTHORIZED OPERATORS ONLY



FT/METER CONVERSION

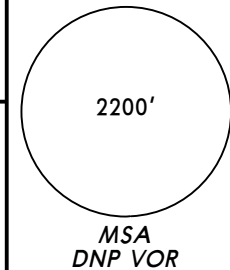
QNH

10010'	-	3050m
8040'	-	2450m
6070'	-	1850m
2960'	-	900m
2470'	-	750m

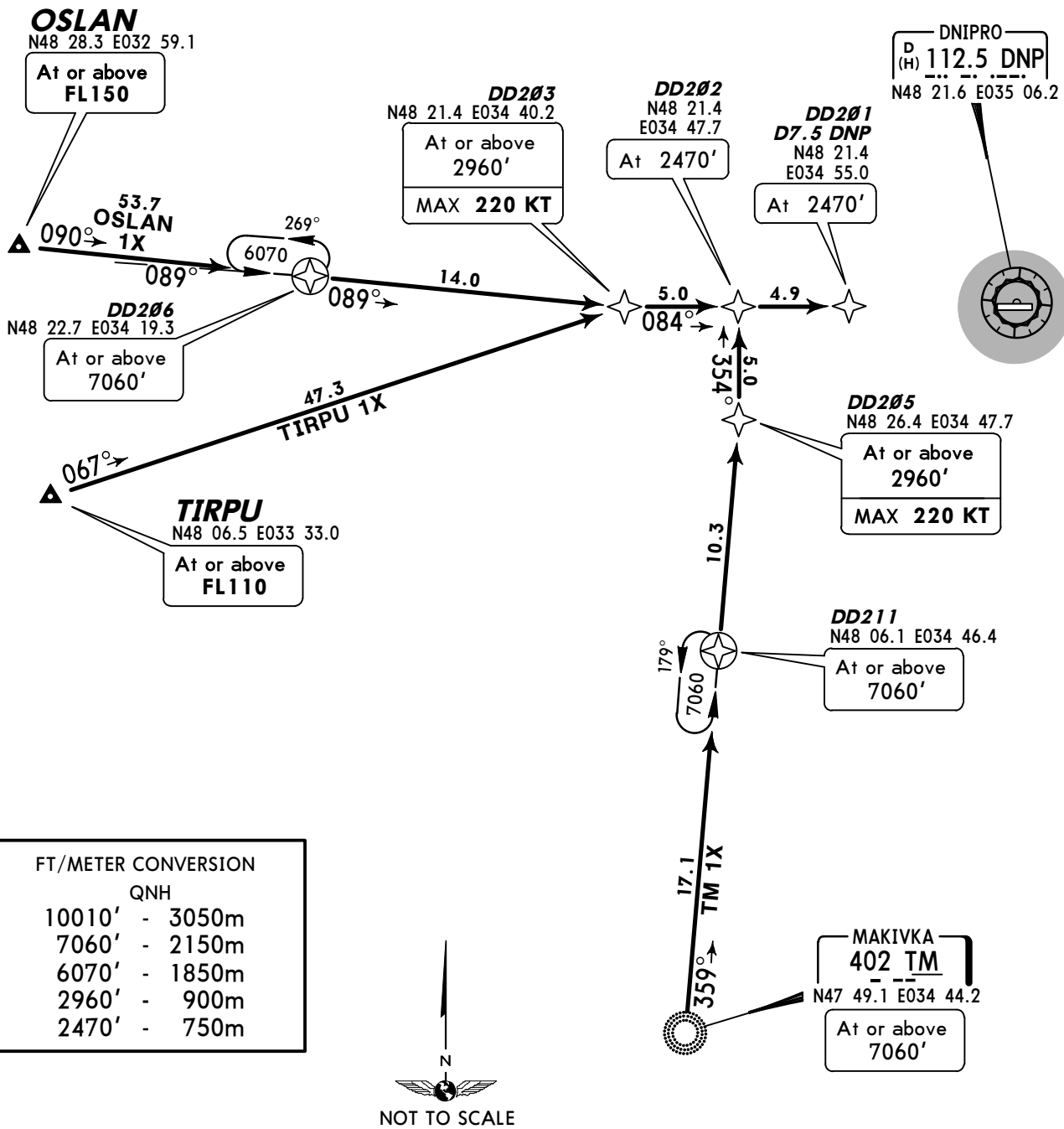
STAR	ROUTING
<b>BULIG 1Z</b>	BULIG (8040'+) - DD407 - DD404 (2960'+; K220-) - DD402 (2470') - DD401 (2470').
<b>KOSIR 1Z</b>	KOSIR (8040'+) - DD407 - DD404 (2960'+; K220-) - DD402 (2470') - DD401 (2470').
<b>RUBES 1Z</b>	RUBES (8040'+) - DD404 (2960'+; K220-) - DD402 (2470') - DD401 (2470').

Apt Elev  
482'

Alt Set: hPa (MM on request)  
Trans level: By ATC Trans alt: 10010'  
EXPECT ILS or NDB approach on DD201.



**MAKIVKA ONE X-RAY (TM 1X)**  
**OSLAN ONE X-RAY (OSLAN 1X) [OSLA 1X]**  
**TIRPU ONE X-RAY (TIRPU 1X) [TIRP 1X]**  
**RWY 08 RNAV ARRIVALS**  
RNAV 1 (GNSS)  
RNAV-1 (P-RNAV) APPROVAL REQUIRED  
OTHERWISE ADVISE ATC  
TO BE USED BY AUTHORIZED OPERATORS ONLY



FT/METER CONVERSION	
QNH	
10010'	- 3050m
7060'	- 2150m
6070'	- 1850m
2960'	- 900m
2470'	- 750m

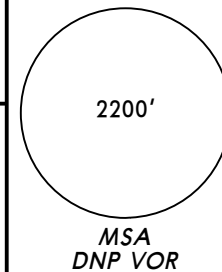


STAR	ROUTING
<b>OSLAN 1X</b>	OSLAN (FL150+) - DD206 (7060'+) - DD203 (2960'+; K220-) - DD202 (2470') - DD201 (2470').
<b>TIRPU 1X</b>	TIRPU (FL110+) - DD203 (2960'+; K220-) - DD202 (2470') - DD201 (2470').
<b>TM 1X</b>	TM (7060'+) - DD211 (7060'+) - DD205 (2960'+; K220-) - DD202 (2470') - DD201 (2470').

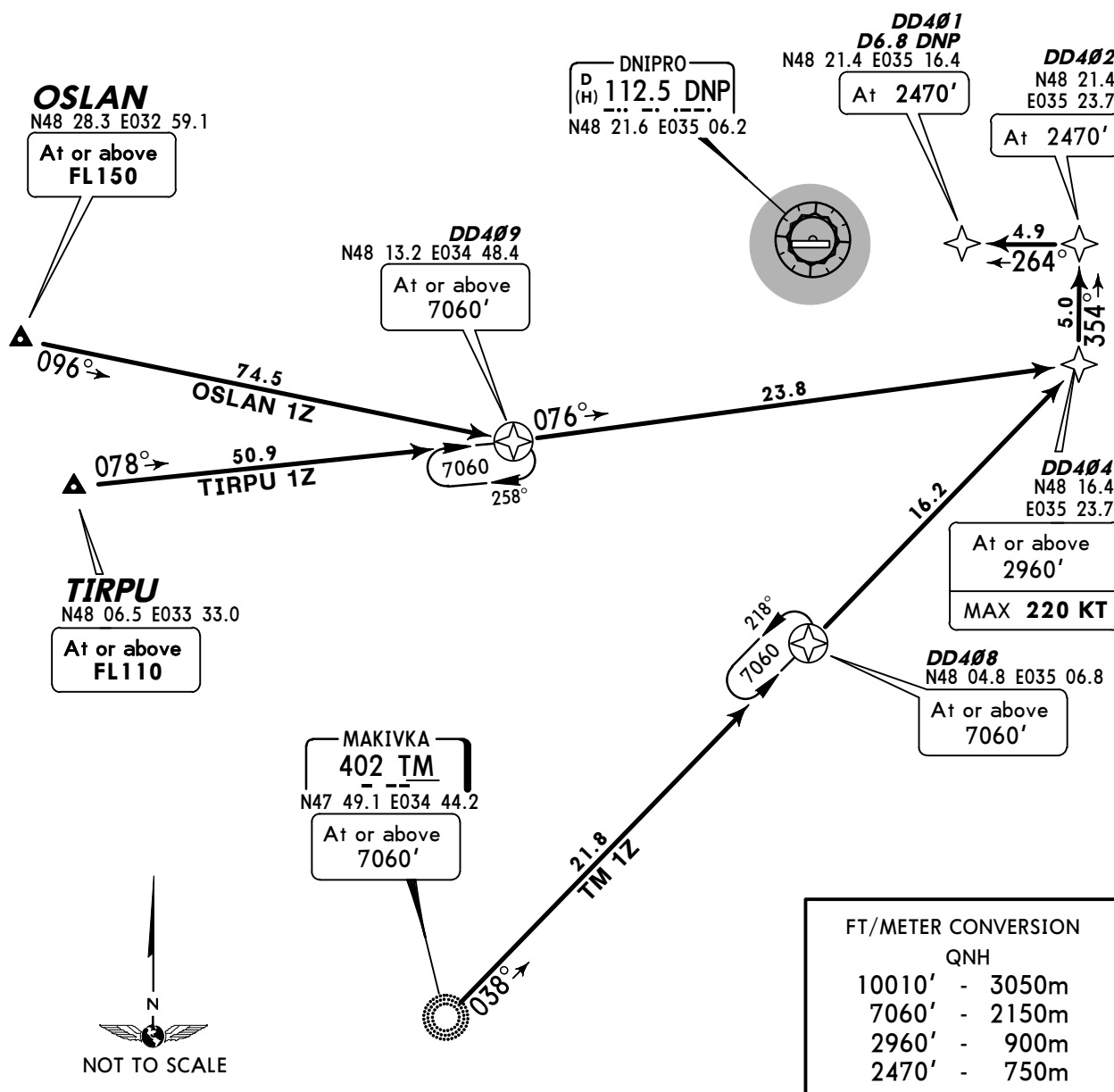


Apt Elev  
482'

Alt Set: hPa (MM on request)  
Trans level: By ATC Trans alt: 10010'  
EXPECT ILS or NDB approach on DD401.



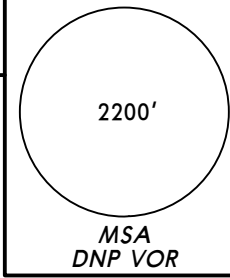
**MAKIVKA ONE ZULU (TM 1Z)**  
**OSLAN ONE ZULU (OSLAN 1Z) [OSLA 1Z]**  
**TIRPU ONE ZULU (TIRPU 1Z) [TIRP 1Z]**  
**RWY 26 RNAV ARRIVALS**  
RNAV 1 (GNSS)  
RNAV-1 (P-RNAV) APPROVAL REQUIRED  
OTHERWISE ADVISE ATC  
TO BE USED BY AUTHORIZED OPERATORS ONLY



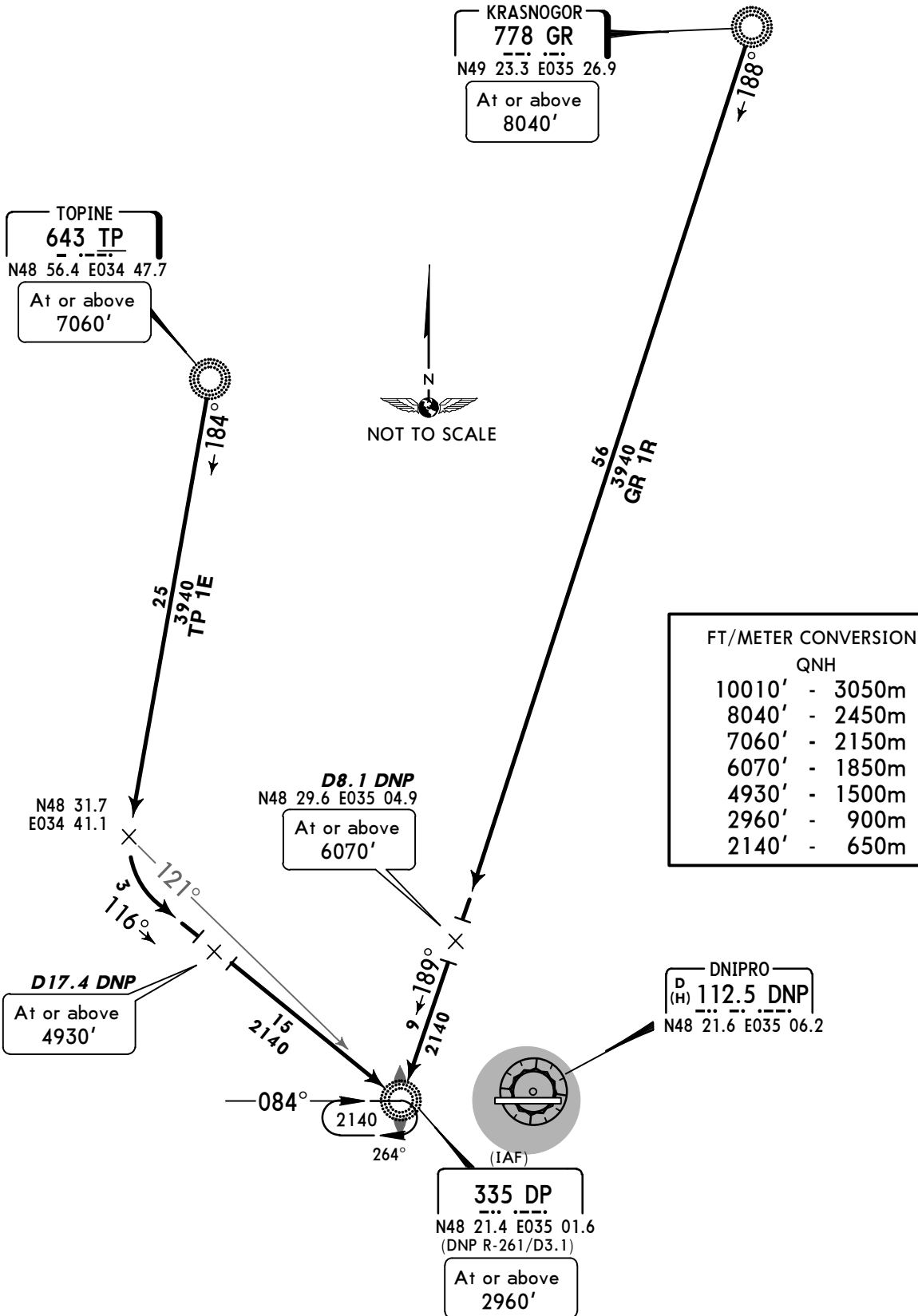
FT/METER CONVERSION	
QNH	
10010'	- 3050m
7060'	- 2150m
2960'	- 900m
2470'	- 750m

STAR	ROUTING
<b>OSLAN 1Z</b>	OSLAN (FL150+) - DD409 (7060'+) - DD404 (2960'+; K220-) - DD402 (2470') - DD401 (2470').
<b>TIRPU 1Z</b>	TIRPU (FL110+) - DD409 (7060'+) - DD404 (2960'+; K220-) - DD402 (2470') - DD401 (2470').
<b>TM 1Z</b>	TM (7060'+) - DD408 (7060'+) - DD404 (2960'+; K220-) - DD402 (2470') - DD401 (2470').

Apt Elev 482'  
Alt Set: hPa (MM on request)  
Trans level: By ATC Trans alt: 10010'



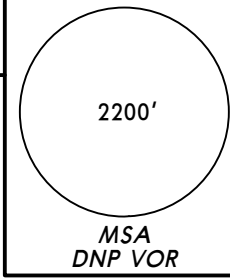
KRASNOGOR ONE ROMEO (GR 1R)  
TOPINE ONE ECHO (TP 1E)  
RWY 08 ARRIVALS



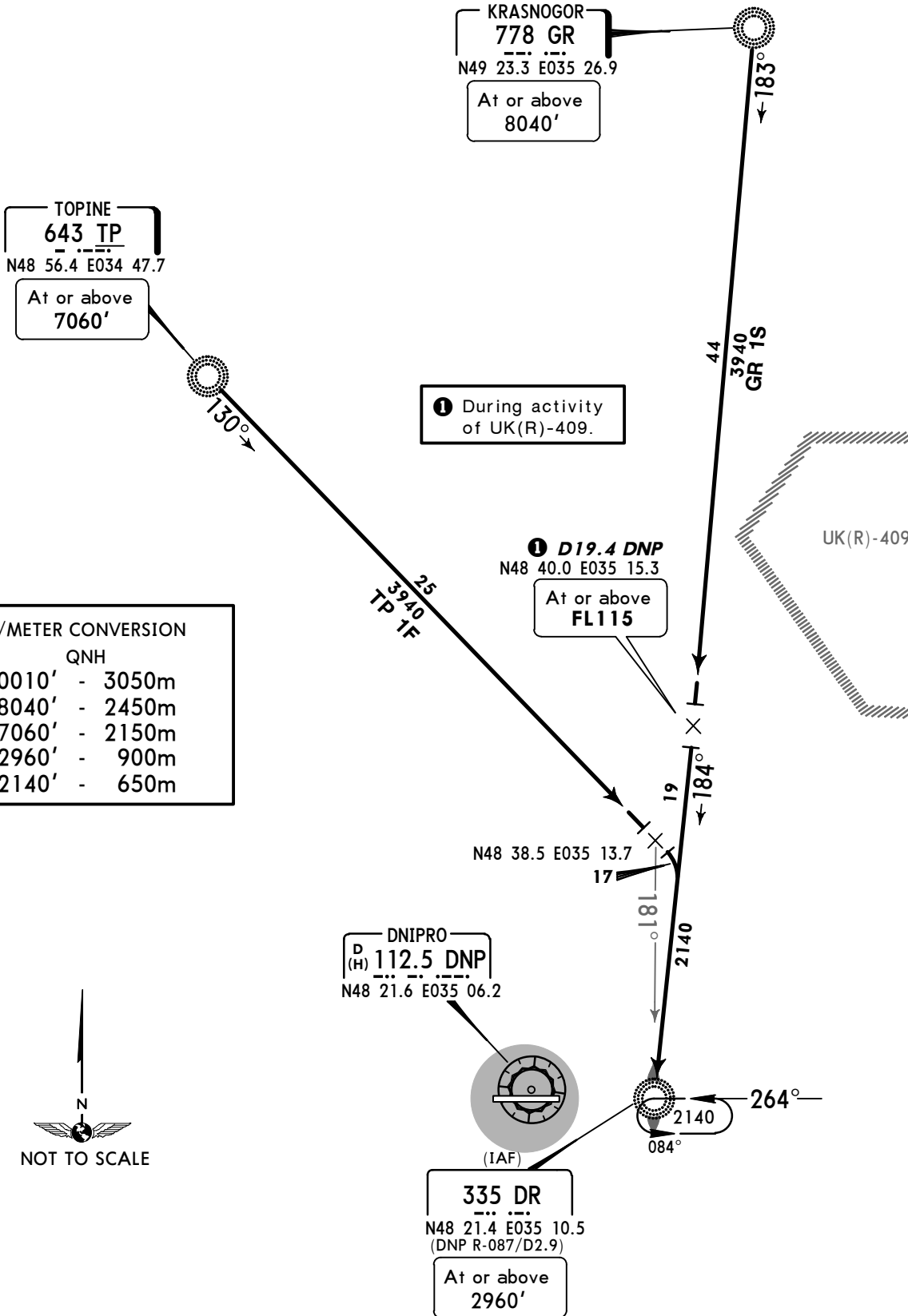
STAR	ROUTING
GR 1R	On 188° bearing to D8.1 DNP, turn RIGHT, intercept 189° bearing to DP.
TP 1E	On 184° bearing, when crossing 121° bearing to DP turn LEFT, intercept 116° bearing to DP.

Apt Elev  
482'

Alt Set: hPa (MM on request)  
Trans level: By ATC Trans alt: 10010'



KRASNOGOR ONE SIERRA (GR 1S)  
TOPINE ONE FOXTROT (TP 1F)  
RWY 26 ARRIVALS



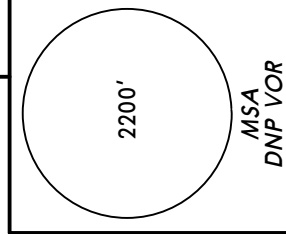
FT/METER CONVERSION

	QNH
10010'	- 3050m
8040'	- 2450m
7060'	- 2150m
2960'	- 900m
2140'	- 650m

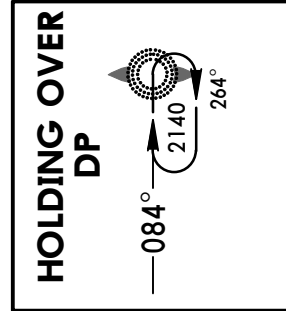
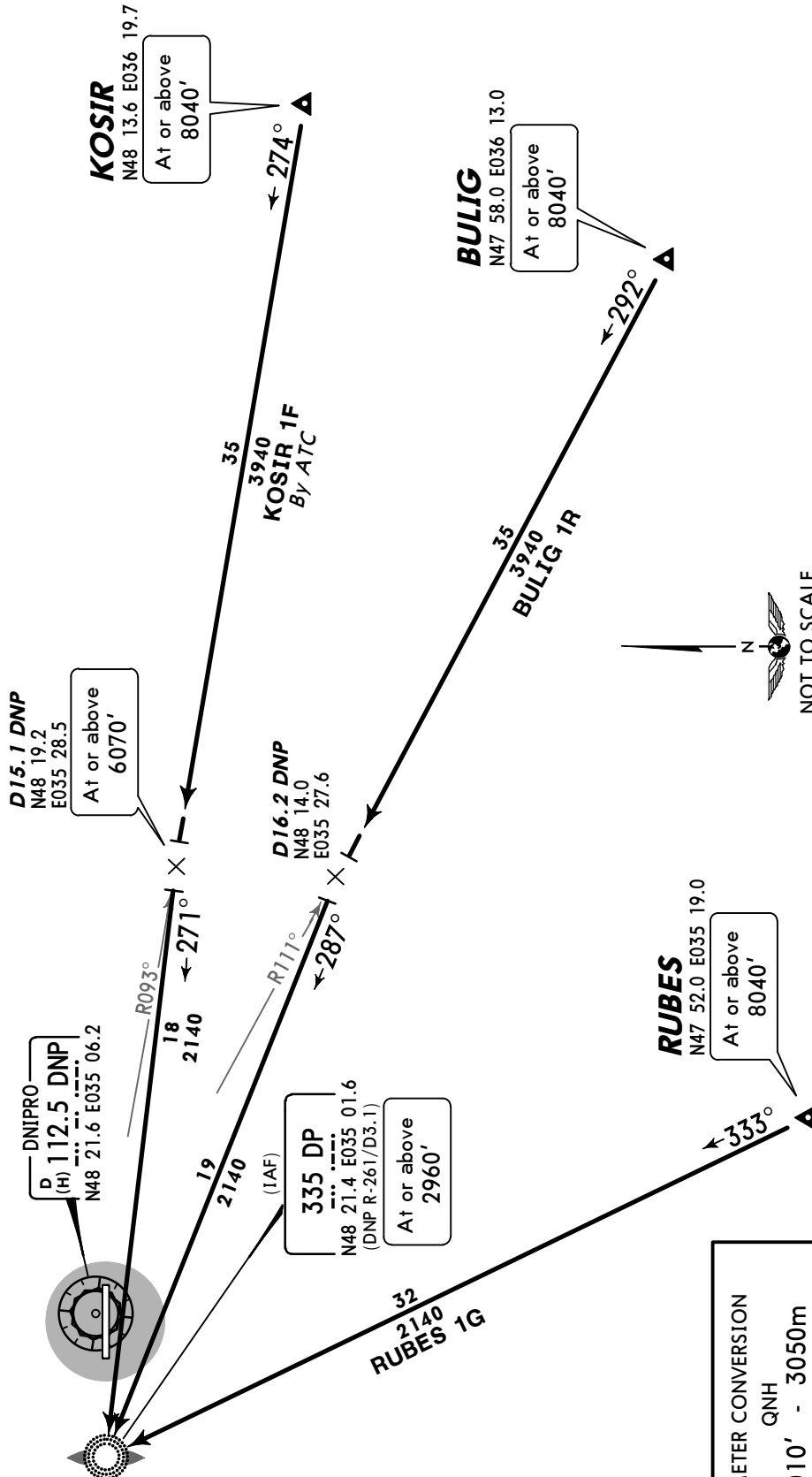


STAR	ROUTING
<b>GR 1S</b>	On 183° bearing to D19.4 DNP, turn RIGHT, intercept 184° bearing to DR.
<b>TP 1F</b>	On 130° bearing, when crossing 181° bearing to DR turn RIGHT, intercept 184° bearing to DR.

Apt Elev  
**482'**  
Alt Set: hPa (MM on request)  
Trans level: By ATC Trans alt: 10010'



**BULIG ONE ROMEO (BULIG 1R) [BULI1R]  
KOSIR ONE FOXTROT (KOSIR 1F) [KOSI1F]  
RUBES ONE GOLF (RUBES 1G) [RUBE1G]  
RWY 08 ARRIVALS**



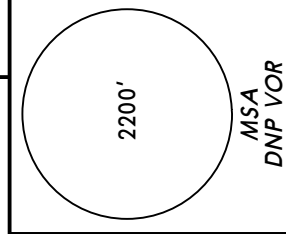
**ROUTING**

<b>STAR</b>	
<b>BULIG 1R</b>	Intercept DNP R-111 inbound to D16.2 DNP, turn LEFT, intercept 287° bearing to DP.
<b>KOSIR 1F BY ATC</b>	Intercept DNP R-093 inbound to D15.1 DNP, turn LEFT, intercept 271° bearing to DP.
<b>RUBES 1G</b>	On 333° bearing to DP.

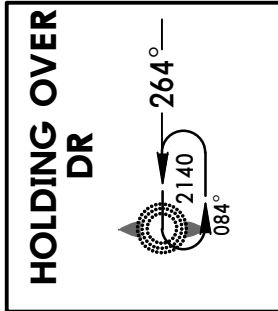
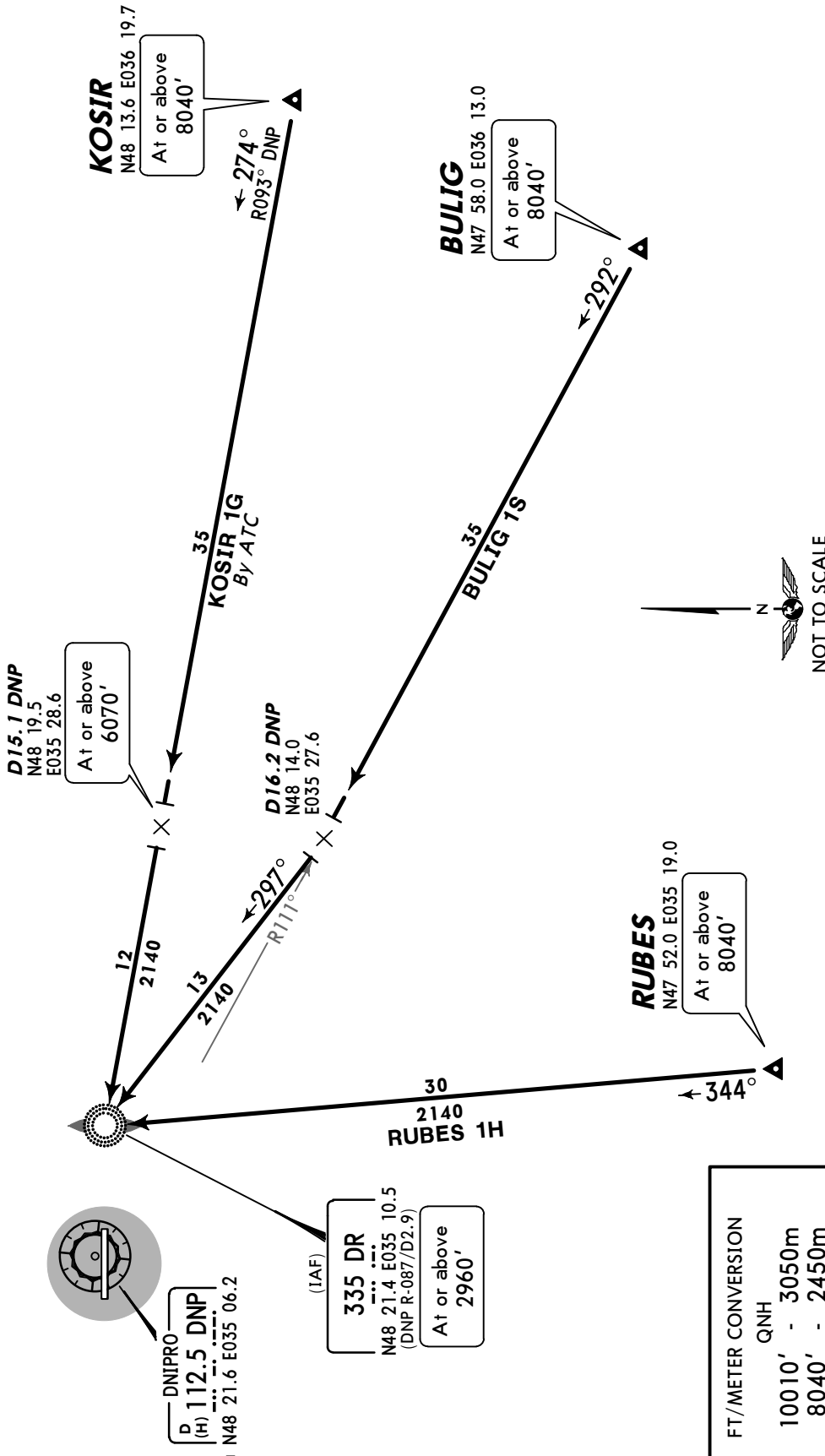
FT./METER CONVERSION	
QNH	
10010'	- 3050m
8040'	- 2450m
6070'	- 1850m
2960'	- 900m
2140'	- 650m

Apt Elev  
482'

Alt Set: hPa (MM on request)  
Trans level: By ATC Trans alt: 10010'



**BULIG ONE SIERRA (BULIG 1S) [BUL11S]  
KOSIR ONE GOLF (KOSIR 1G) [KOS11G]  
RUBES ONE HOTEL (RUBES 1H) [RUBE1H]  
RWY 26 ARRIVALS**

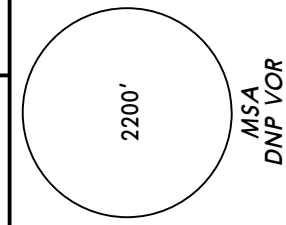


ROUTING	
<b>STAR</b>	
<b>BULIG 1S</b>	Intercept DNP R-111 inbound to D16.2 DNP, turn RIGHT, intercept 297° bearing to DR.
<b>KOSIR 1G BY ATC</b>	Intercept DNP R-093 inbound to D15.1 DNP, intercept 274° bearing to DR.
<b>RUBES 1H</b>	On 344° bearing to DR.

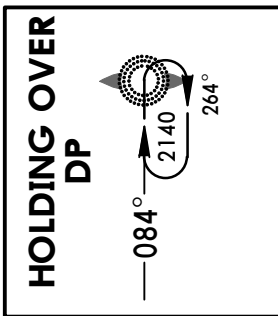
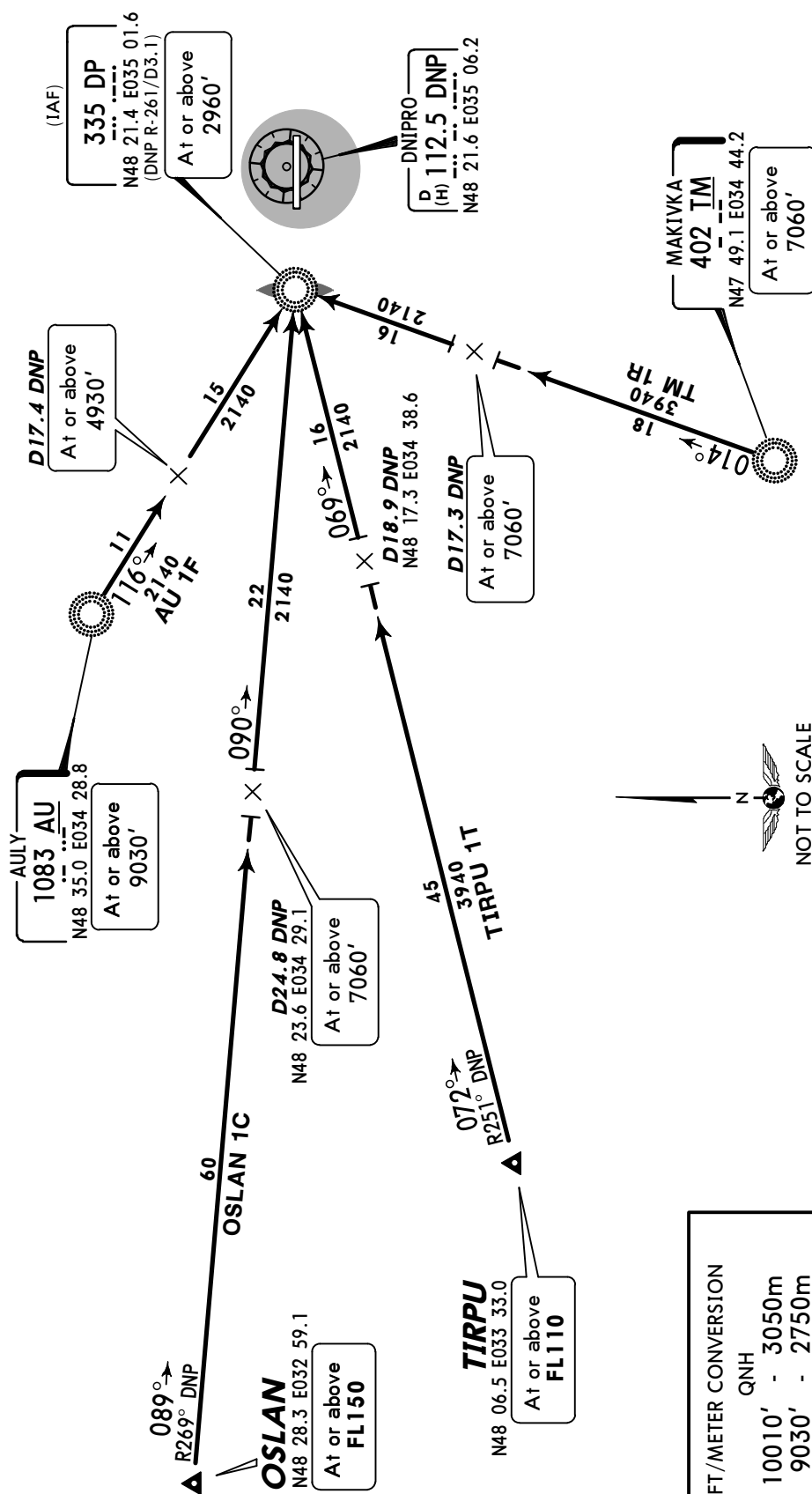
FT./METER CONVERSION	
QNH	
10010'	- 3050m
8040'	- 2450m
6070'	- 1850m
2960'	- 900m
2140'	- 650m

Apt Elev  
482'

Alt Set: hPa (MM on request)  
Trans level: By ATC Trans alt: 10010'



**AULY ONE FOXTROT (AU 1F)  
MAKIVKA ONE ROMEO (TM 1R)  
OSLAN ONE CHARLIE (OSLAN 1C) [OSLA1C]  
TIRPU ONE TANGO (TIRPU 1T) [TIRP1T]  
RWY 08 ARRIVALS**

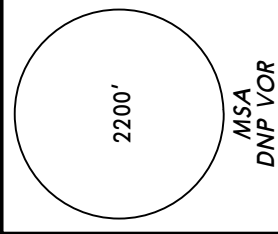


ROUTING	
STAR	On 116° bearing to DP.
AU 1F	Intercept DNP R-269 inbound to D24.8 DNP, turn RIGHT, intercept 090° bearing to DP.
OSLAN 1C	Intercept DNP R-251 inbound to D18.9 DNP, turn LEFT, intercept 069° bearing to DP.
TIRPU 1T	On 014° bearing to DP.
TM 1R	

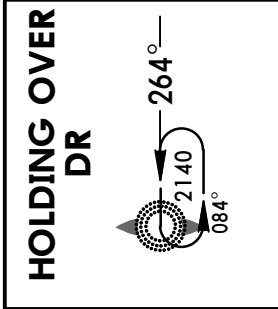
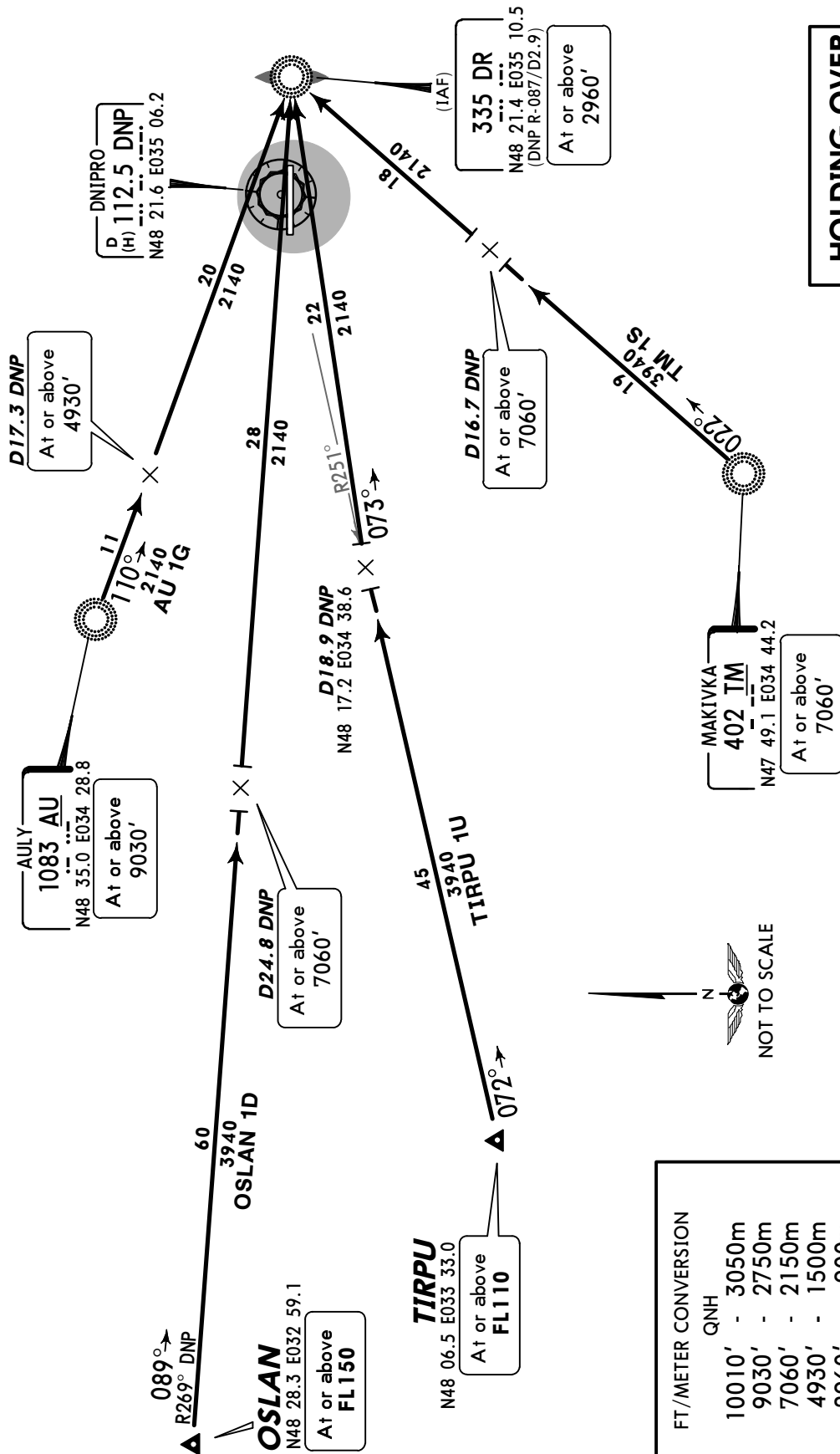
FT/METER CONVERSION	
QNH	
10010'	- 3050m
9030'	- 2750m
7060'	- 2150m
4930'	- 1500m
2960'	- 900m
2140'	- 650m

Apt Elev  
**482'**

Alt Set: hPa (MM on request)  
Trans level: By ATC Trans alt: 10010'

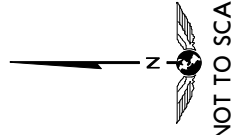


**AULY ONE GOLF (AU 1G)  
MAKIVKA ONE SIERRA (TM 1S)  
OSLAN ONE DELTA (OSLAN 1D) [OSLA 1D]  
TIRPU ONE UNIFORM (TIRPU 1U) [TIRP 1U]  
RWY 26 ARRIVALS**



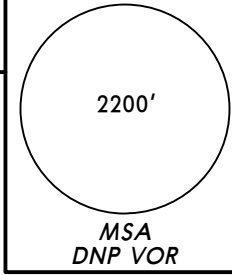
ROUTING	
STAR	On 110° bearing to DR.
AU 1G	Intercept DNP R-269 inbound to D24.8 DNP, turn RIGHT, intercept 089° bearing to DR.
OSLAN 1D	Intercept DNP R-251 inbound to D18.9 DNP, turn RIGHT, intercept 073° bearing to DR.
TIRPU 1U	On 022° bearing to DR.
TM 1S	

FT/METER CONVERSION	
QNH	
10010'	- 3050m
9030'	- 2750m
7060'	- 2150m
4930'	- 1500m
2960'	- 900m
2140'	- 650m



Apt Elev  
482'

Trans level: By ATC Trans alt: 10010'



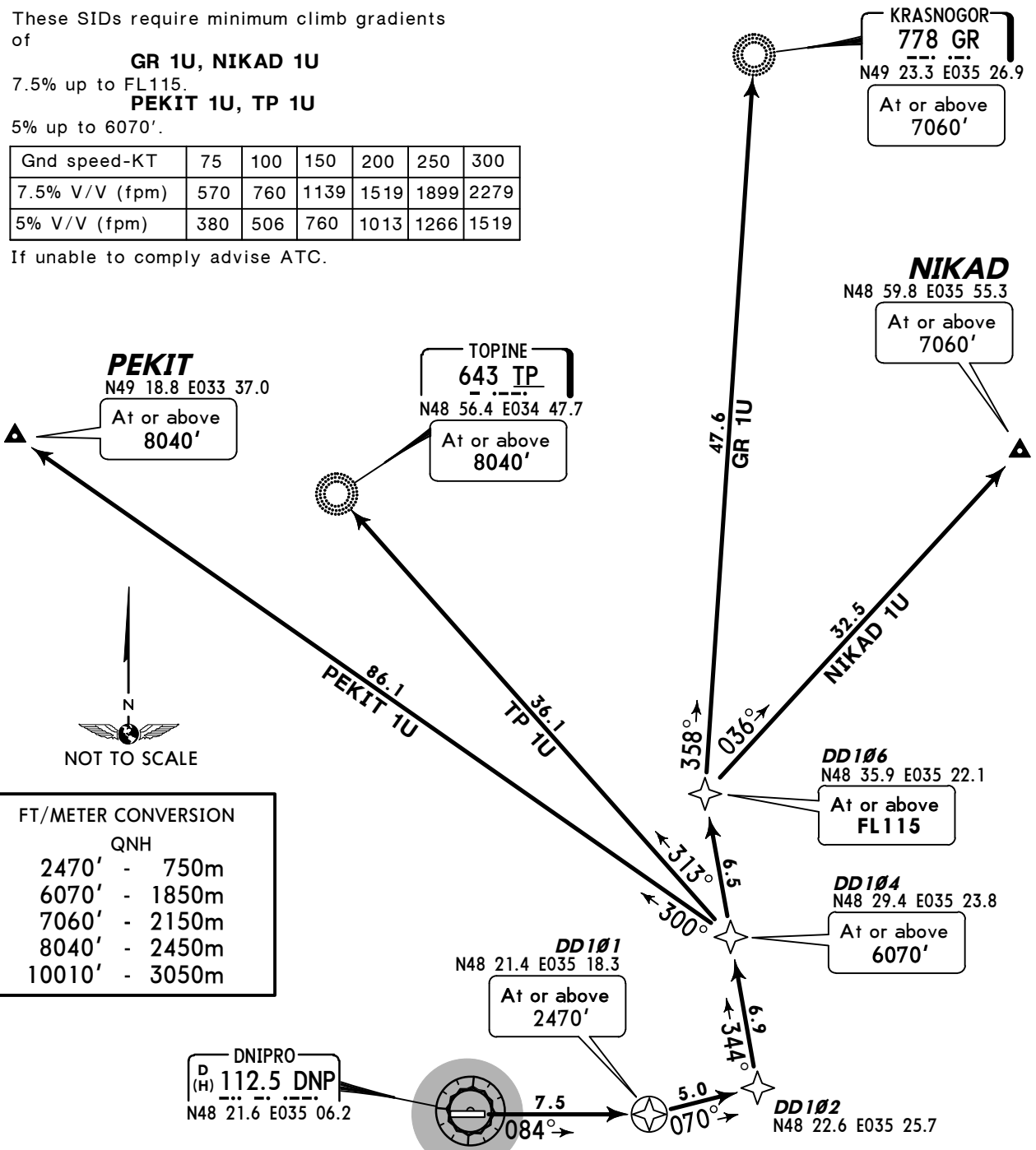
**KRASNOGOR ONE UNIFORM (GR 1U)**  
**NIKAD ONE UNIFORM (NIKAD 1U) [NIKA1U]**  
**PEKIT ONE UNIFORM (PEKIT 1U) [PEKI1U]**  
**TOPINE ONE UNIFORM (TP 1U)**  
**RWY 08 RNAV DEPARTURES**  
 RNAV (GNSS)  
 RNAV-1 (P-RNAV) APPROVAL REQUIRED  
 OTHERWISE ADVISE ATC  
 TO BE USED BY AUTHORIZED OPERATORS ONLY

These SIDs require minimum climb gradients of

**GR 1U, NIKAD 1U**  
7.5% up to FL115.  
**PEKIT 1U, TP 1U**  
5% up to 6070'.

Gnd speed-KT	75	100	150	200	250	300
7.5% V/V (fpm)	570	760	1139	1519	1899	2279
5% V/V (fpm)	380	506	760	1013	1266	1519

If unable to comply advise ATC.



FT/METER CONVERSION

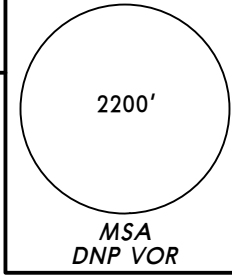
2470'	-	750m
6070'	-	1850m
7060'	-	2150m
8040'	-	2450m
10010'	-	3050m

SID	ROUTING
<b>GR 1U</b>	DD101 (2470'+) - DD102 - DD104 (6070'+) - DD106 (FL115+) - GR (7060'+).
<b>NIKAD 1U</b>	DD101 (2470'+) - DD102 - DD104 (6070'+) - DD106 (FL115+) - NIKAD (7060'+).
<b>PEKIT 1U</b>	DD101 (2470'+) - DD102 - DD104 (6070'+) - PEKIT (8040'+).
<b>TP 1U</b>	DD101 (2470'+) - DD102 - DD104 (6070'+) - TP (8040'+).



Apt Elev  
482'

Trans level: By ATC Trans alt: 10010'



**KRASNOGOR ONE WHISKEY (GR 1W)**  
**NIKAD ONE WHISKEY (NIKAD 1W) [NIKA1W]**  
**PEKIT ONE WHISKEY (PEKIT 1W) [PEKI1W]**  
**TOPINE ONE WHISKEY (TP 1W)**  
**RWY 26 RNAV DEPARTURES**  
 RNAV (GNSS)  
 RNAV-1 (P-RNAV) APPROVAL REQUIRED  
 OTHERWISE ADVISE ATC  
 TO BE USED BY AUTHORIZED OPERATORS ONLY

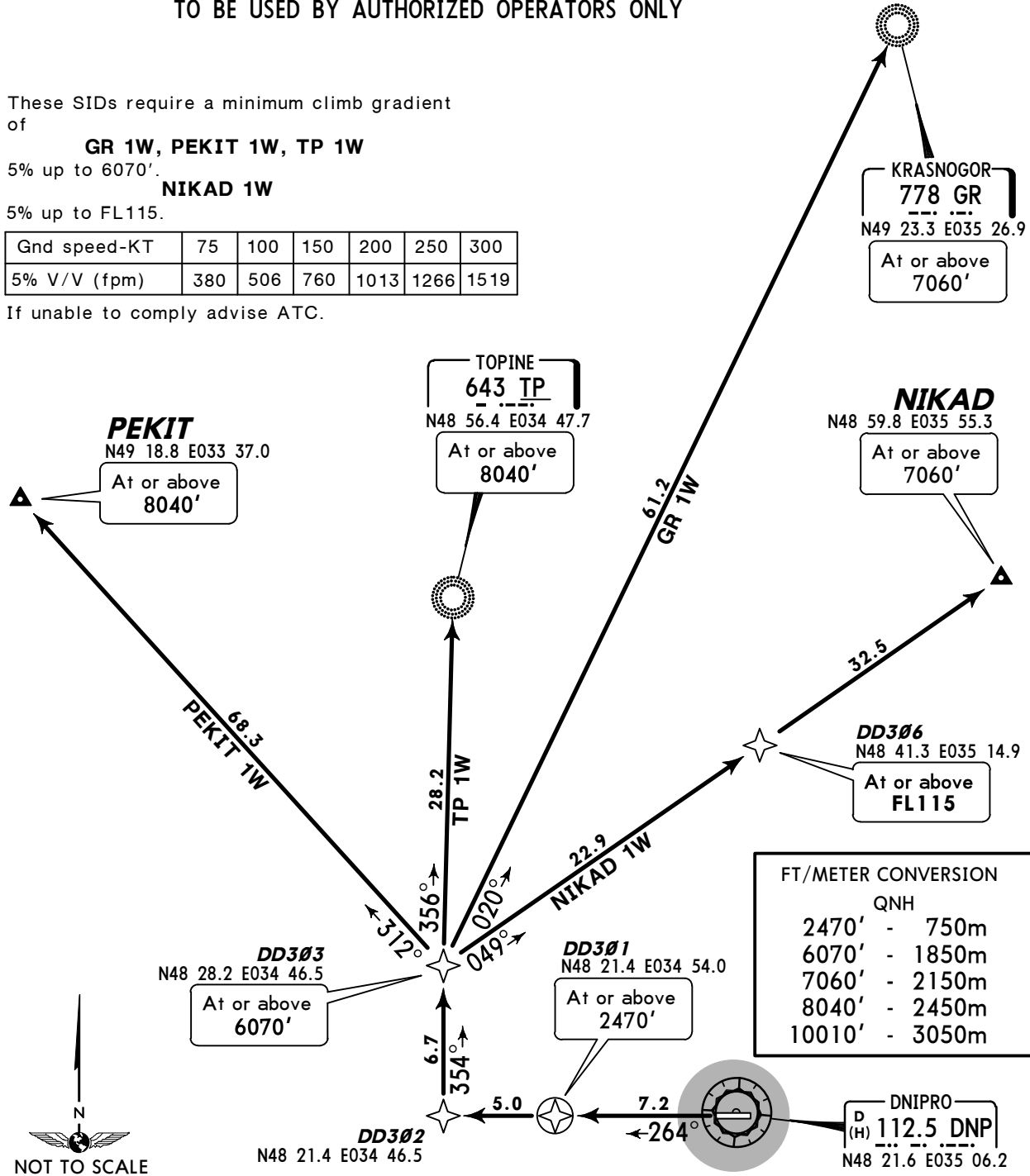
These SIDs require a minimum climb gradient of

**GR 1W, PEKIT 1W, TP 1W**  
5% up to 6070'.

**NIKAD 1W**  
5% up to FL115.

Gnd speed-KT	75	100	150	200	250	300
5% V/V (fpm)	380	506	760	1013	1266	1519

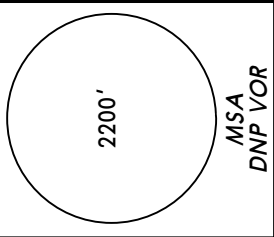
If unable to comply advise ATC.



SID	ROUTING
<b>GR 1W</b>	DD301 (2470'+) - DD302 - DD303 (6070'+) - GR (7060'+).
<b>NIKAD 1W</b>	DD301 (2470'+) - DD302 - DD303 (6070'+) - DD306 (FL115+) - NIKAD (7060'+).
<b>PEKIT 1W</b>	DD301 (2470'+) - DD302 - DD303 (6070'+) - PEKIT (8040'+).
<b>TP 1W</b>	DD301 (2470'+) - DD302 - DD303 (6070'+) - TP (8040'+).

Apt Elev  
482'

Trans level: By ATC Trans alt: 10010'



**BULIG ONE UNIFORM (BULIG 1U) [BUL11U]**  
**KOSIR ONE UNIFORM (KOSIR 1U) [KOS11U]**  
**MAKIVKA ONE UNIFORM (TM 1U)**  
**RUBES ONE UNIFORM (RUBES 1U) [RUBE1U]**  
**RWY 08 RNAV DEPARTURES**

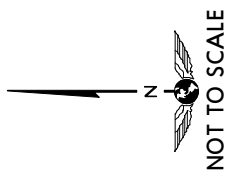
RNAV (GNSS)  
 RNAV-1 (P-RNAV) APPROVAL REQUIRED  
 OTHERWISE ADVISE ATC

TO BE USED BY AUTHORIZED OPERATORS ONLY

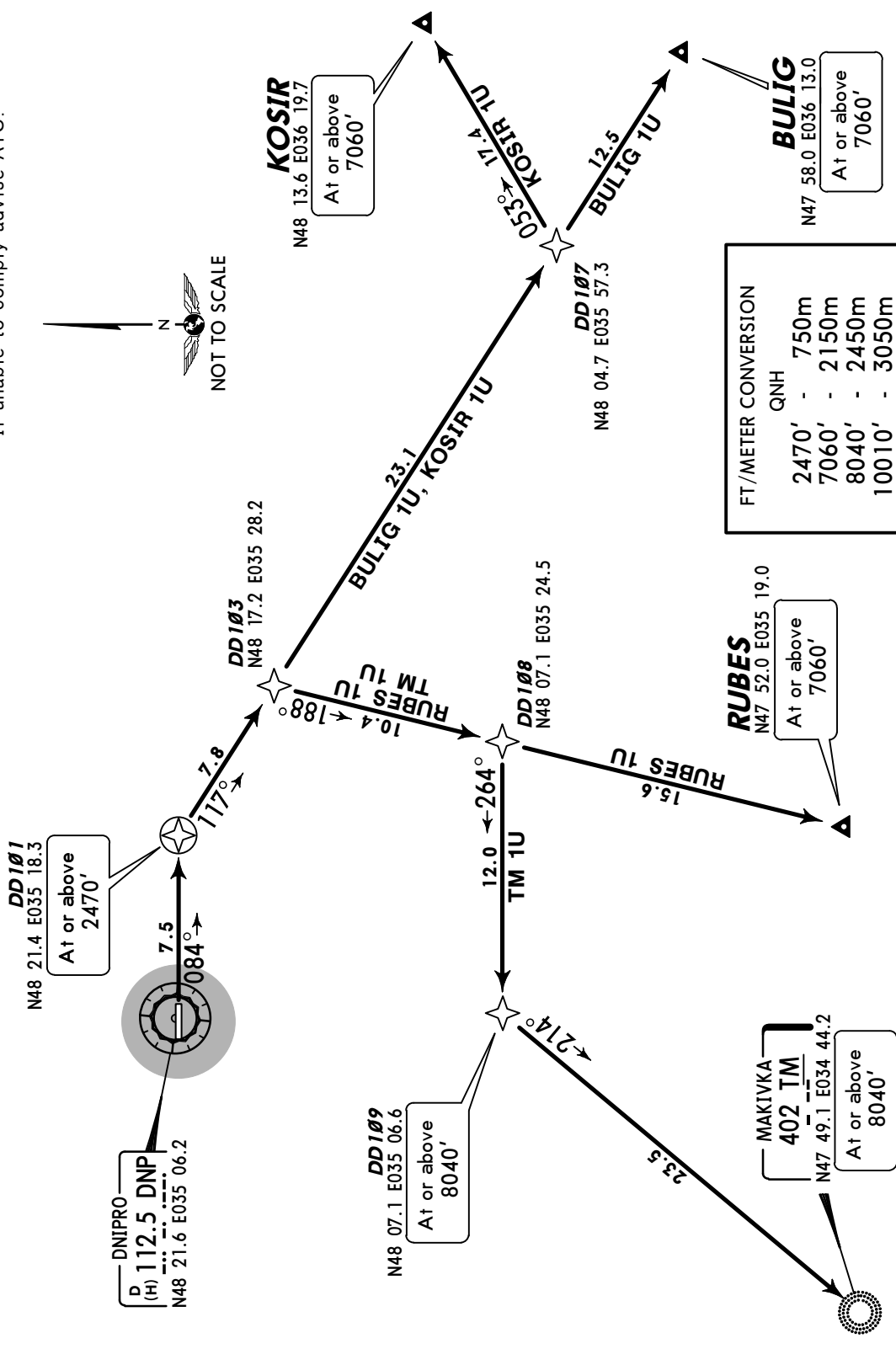
These SIDs require a minimum climb gradient of 4.5% up to 2470'.

Gnd speed-KT	75	100	150	200	250	300
4.5% V/V (fpm)	342	456	684	911	1139	1367

If unable to comply advise ATC.



SID	ROUTING
BULIG 1U	DD101 (2470'+) - DD103 - DD107 - BULIG (7060'+).
KOSIR 1U	DD101 (2470'+) - DD103 - DD107 - KOSIR (7060'+).
RUBES 1U	DD101 (2470'+) - DD103 - DD108 - RUBES (7060'+).
TM 1U	DD101 (2470'+) - DD103 - DD108 - DD109 (8040'+) - TM (8040'+).

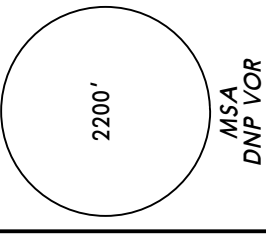


FT/METER CONVERSION  
 QNH

2470'	-	750m
7060'	-	2150m
8040'	-	2450m
10010'	-	3050m

Apt Elev  
482'

Trans level: By ATC Trans alt: 10010'



**BULIG ONE WHISKEY (BULIG 1W) [BUL11W]  
KOSIR ONE WHISKEY (KOSIR 1W) [KOSI1W]  
MAKIVKA ONE WHISKEY (TM 1W)  
RUBES ONE WHISKEY (RUBES 1W) [RUBE1W]  
RWY 26 RNAV DEPARTURES**

RNAV (GNSS)

RNAV-1 (P-RNAV) APPROVAL REQUIRED OTHERWISE ADVISE ATC  
TO BE USED BY AUTHORIZED OPERATORS ONLY

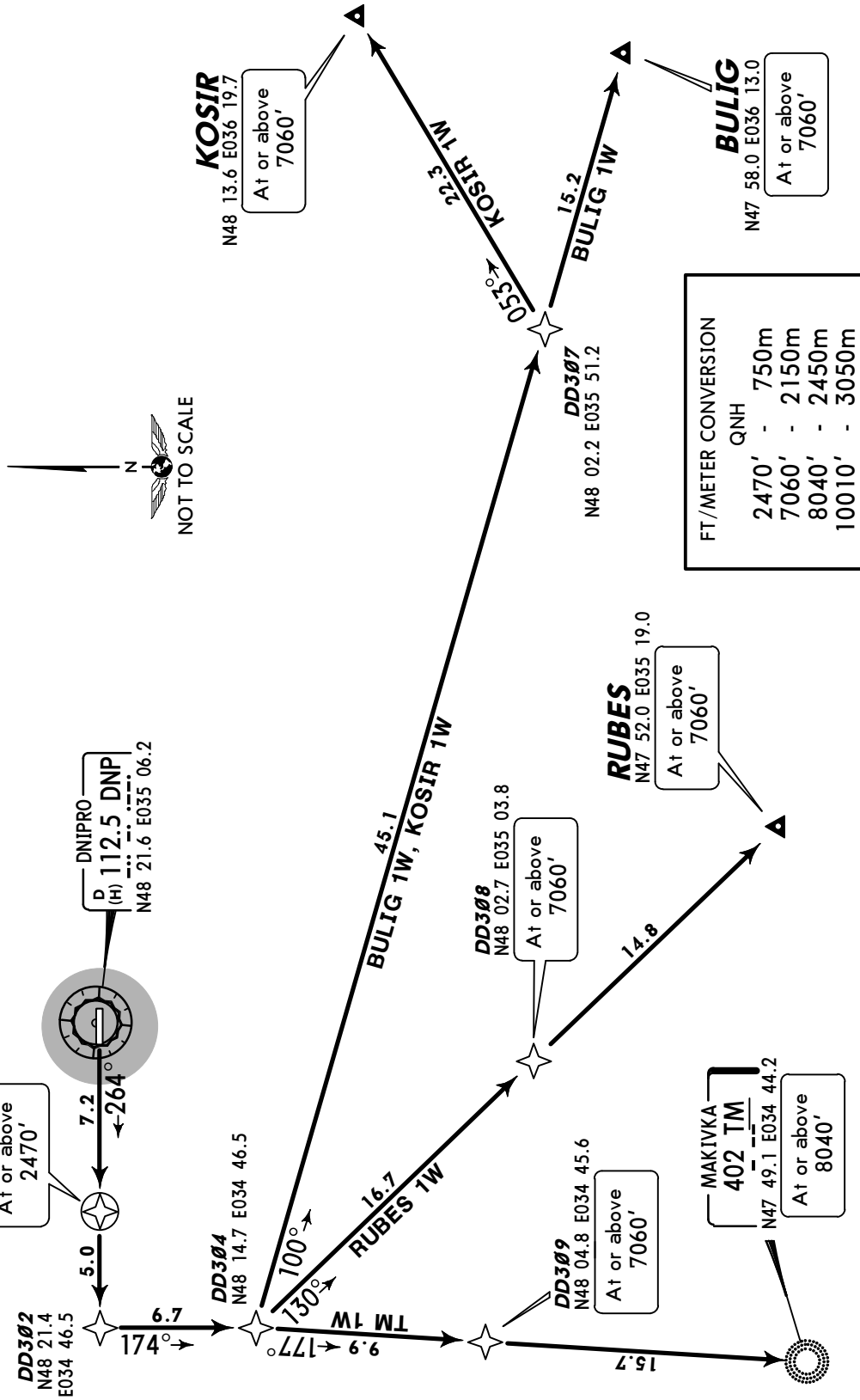
These SIDs require a minimum climb gradient of 5% up to 2470'.

Gnd speed-KT	75	100	150	200	250	300
5% V/V (fpm)	380	506	760	1013	1266	1519

If unable to comply advise ATC.

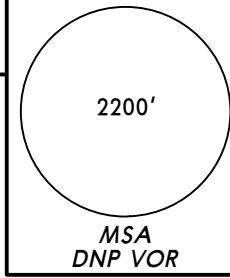
**ROUTING**

SID	ROUTING
BULIG 1W	DD301 (2470'+) - DD302 - DD304 - DD307 - BULIG (7060'+).
KOSIR 1W	DD301 (2470'+) - DD302 - DD304 - DD307 - KOSIR (7060'+).
RUBES 1W	DD301 (2470'+) - DD302 - DD304 - DD308 (7060'+) - RUBES (7060'+).
TM 1W	DD301 (2470'+) - DD302 - DD304 - DD309 (7060'+) - TM (8040'+).



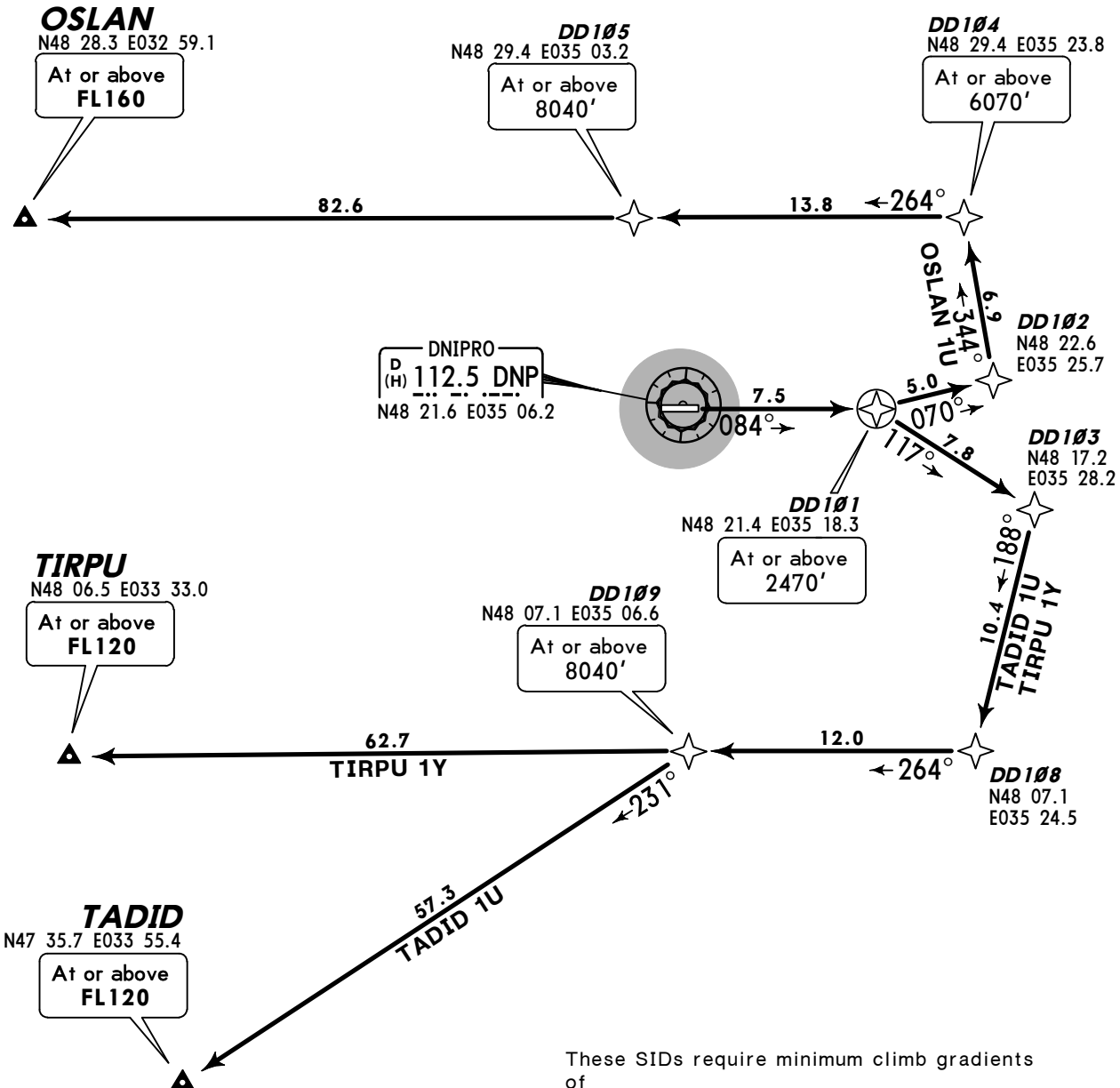
Apt Elev  
482'

Trans level: By ATC Trans alt: 10010'



OSLAN ONE UNIFORM (OSLAN 1U) [OSLA1U]  
TADID ONE UNIFORM (TADID 1U) [TADI1U]  
TIRPU ONE YANKEE (TIRPU 1Y) [TIRP1Y]  
RWY 08 RNAV DEPARTURES

RNAV (GNSS)  
RNAV-1 (P-RNAV) APPROVAL REQUIRED  
OTHERWISE ADVISE ATC  
TO BE USED BY AUTHORIZED OPERATORS ONLY

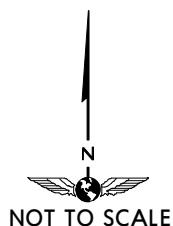


These SIDs require minimum climb gradients of

- OSLAN 1U**  
5% up to 6070'.
- TADID 1U, TIRPU 1Y**  
4.5% up to 2470'.

Gnd speed-KT	75	100	150	200	250	300
5% V/V (fpm)	380	506	760	1013	1266	1519
4.5% V/V (fpm)	342	456	684	911	1139	1367

If unable to comply advise ATC.

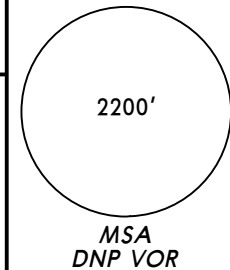


FT/METER CONVERSION	
QNH	
2470'	- 750m
6070'	- 1850m
8040'	- 2450m
10010'	- 3050m

SID	ROUTING
<b>OSLAN 1U</b>	DD101 (2470'+) - DD102 - DD104 (6070'+) - DD105 (8040'+) - OSLAN (FL160+).
<b>TADID 1U</b>	DD101 (2470'+) - DD103 - DD108 - DD109 (8040'+) - TADID (FL120+).
<b>TIRPU 1Y</b>	DD101 (2470'+) - DD103 - DD108 - DD109 (8040'+) - TIRPU (FL120+).

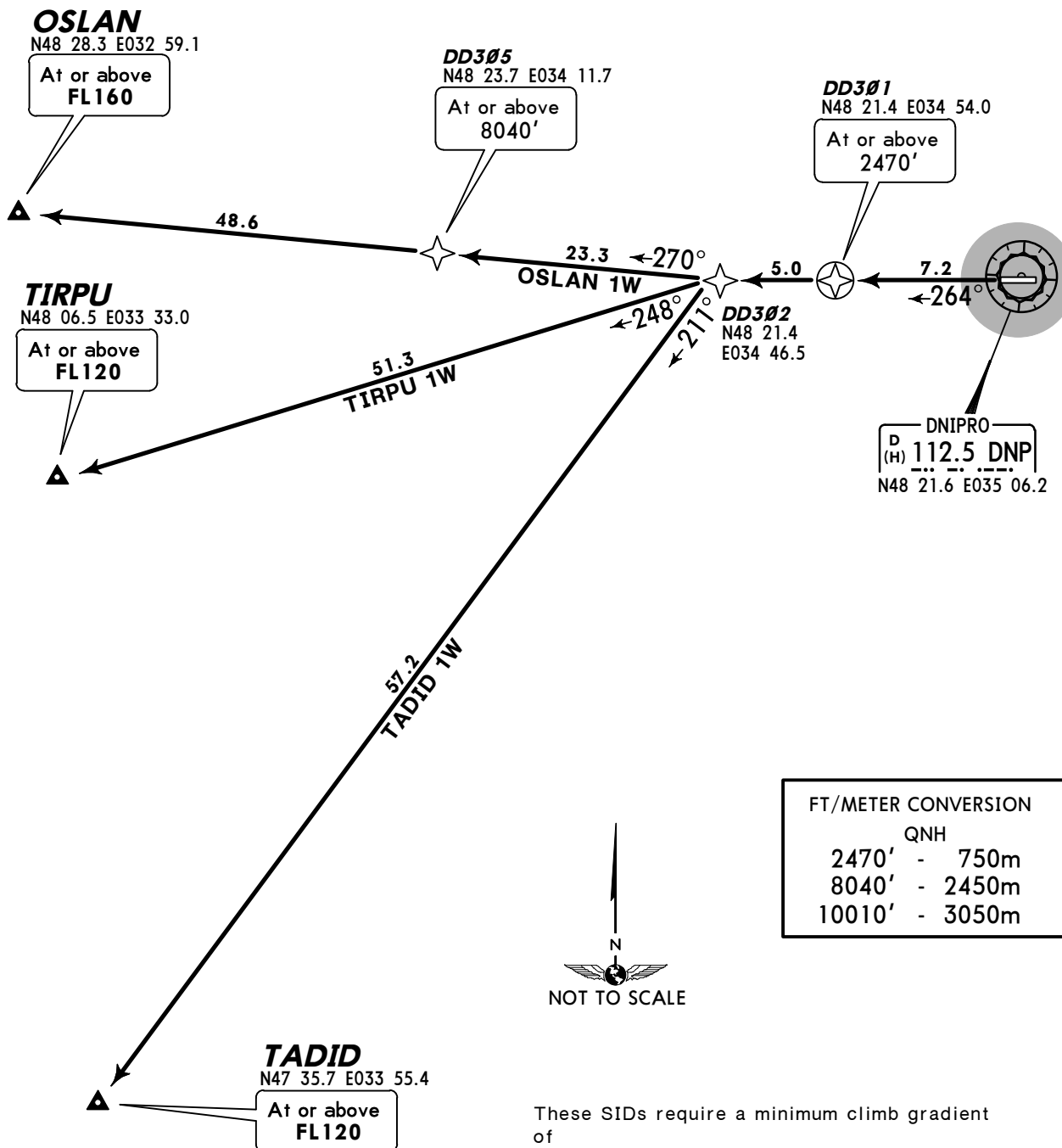
Apt Elev  
482'

Trans level: By ATC Trans alt: 10010'



OSLAN ONE WHISKEY (OSLAN 1W) [OSLA1W]  
TADID ONE WHISKEY (TADID 1W) [TADI1W]  
TIRPU ONE WHISKEY (TIRPU 1W) [TIRP1W]  
RWY 26 RNAV DEPARTURES

RNAV (GNSS)  
RNAV-1 (P-RNAV) APPROVAL REQUIRED  
OTHERWISE ADVISE ATC  
TO BE USED BY AUTHORIZED OPERATORS ONLY



FT/METER CONVERSION

	QNH
2470'	- 750m
8040'	- 2450m
10010'	- 3050m



These SIDs require a minimum climb gradient of 5% up to 2470'.

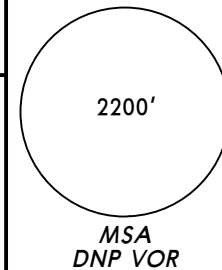
Gnd speed-KT	75	100	150	200	250	300
5% V/V (fpm)	380	506	760	1013	1266	1519

If unable to comply advise ATC.

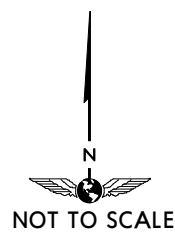
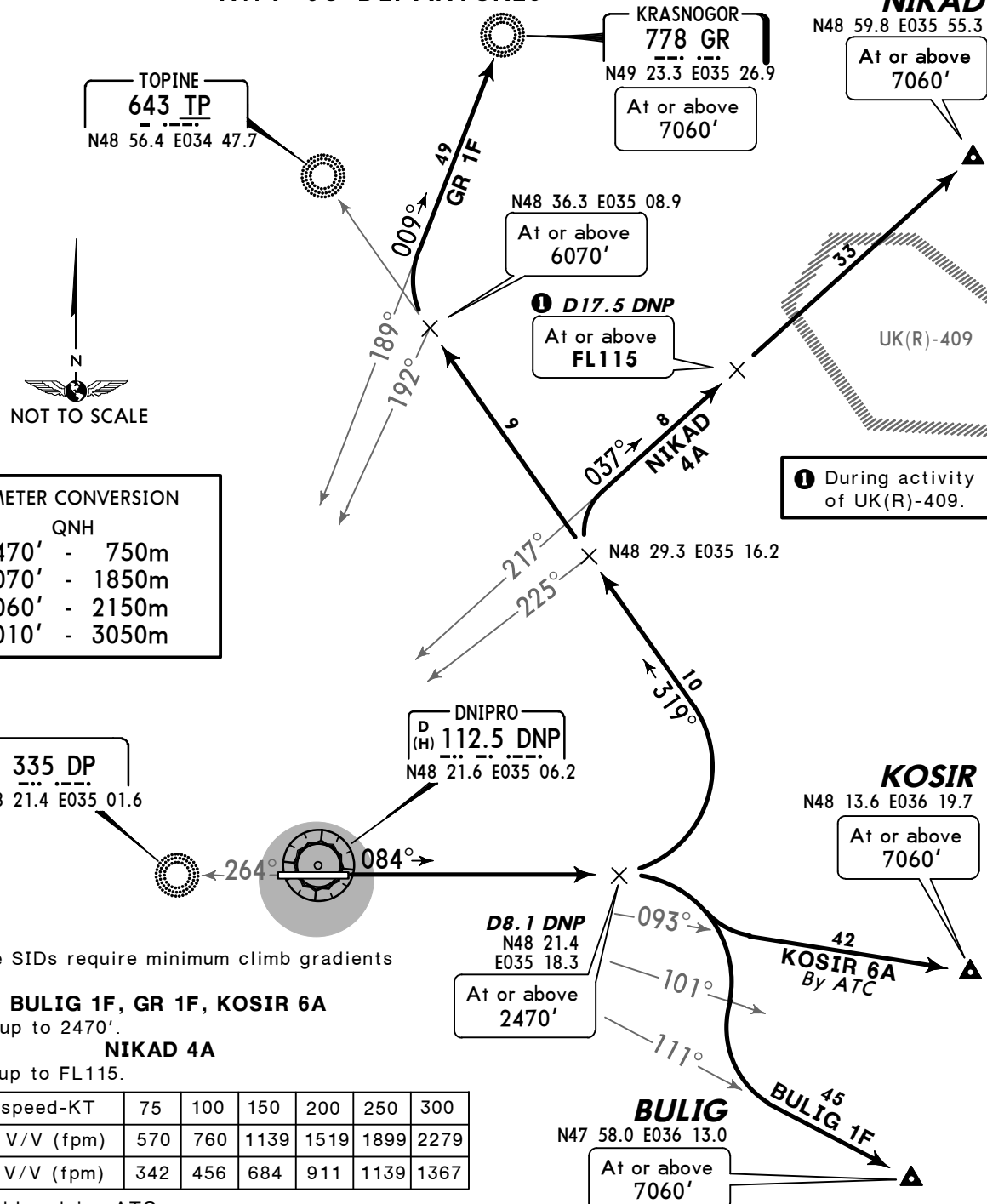
SID	ROUTING
OSLAN 1W	DD301 (2470'+) - DD302 - DD305 (8040'+) - OSLAN (FL160+).
TADID 1W	DD301 (2470'+) - DD302 - TADID (FL120+).
TIRPU 1W	DD301 (2470'+) - DD302 - TIRPU (FL120+).

Apt Elev  
482'

Trans level: By ATC Trans alt: 10010'



**BULIG ONE FOXTROT (BULIG 1F) [BUL11F]**  
**KOSIR SIX ALFA (KOSIR 6A) [KOSI6A]**  
**KRASNOGOR ONE FOXTROT (GR 1F)**  
**NIKAD FOUR ALFA (NIKAD 4A) [NIKA4A]**  
**RWY 08 DEPARTURES**



**FT/METER CONVERSION**

QNH	
2470'	- 750m
6070'	- 1850m
7060'	- 2150m
10010'	- 3050m

These SIDs require minimum climb gradients of

**BULIG 1F, GR 1F, KOSIR 6A**  
4.5% up to 2470'.

**NIKAD 4A**  
7.5% up to FL115.

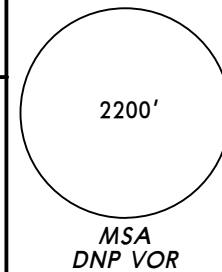
Gnd speed-KT	75	100	150	200	250	300
7.5% V/V (fpm)	570	760	1139	1519	1899	2279
4.5% V/V (fpm)	342	456	684	911	1139	1367

If unable advise ATC.

SID	ROUTING
<b>BULIG 1F</b>	Climb on 084° bearing from DP to D8.1 DNP, turn RIGHT, when passing DNP R-101 turn LEFT, intercept DNP R-111 to BULIG.
<b>GR 1F</b>	Climb on 084° bearing from DP to D8.1 DNP, turn LEFT, intercept 319° bearing towards TP, when passing 192° bearing to DP, turn RIGHT, intercept 009° bearing from DP to GR.
<b>KOSIR 6A BY ATC</b>	Climb on 084° bearing from DP to D8.1 DNP, turn RIGHT, intercept DNP R-093 to KOSIR.
<b>NIKAD 4A</b>	Climb on 084° bearing from DP to D8.1 DNP, turn LEFT, intercept 319° bearing towards TP, when passing 225° bearing to DP, turn RIGHT, intercept 037° bearing from DP to NIKAD.

Apt Elev  
482'

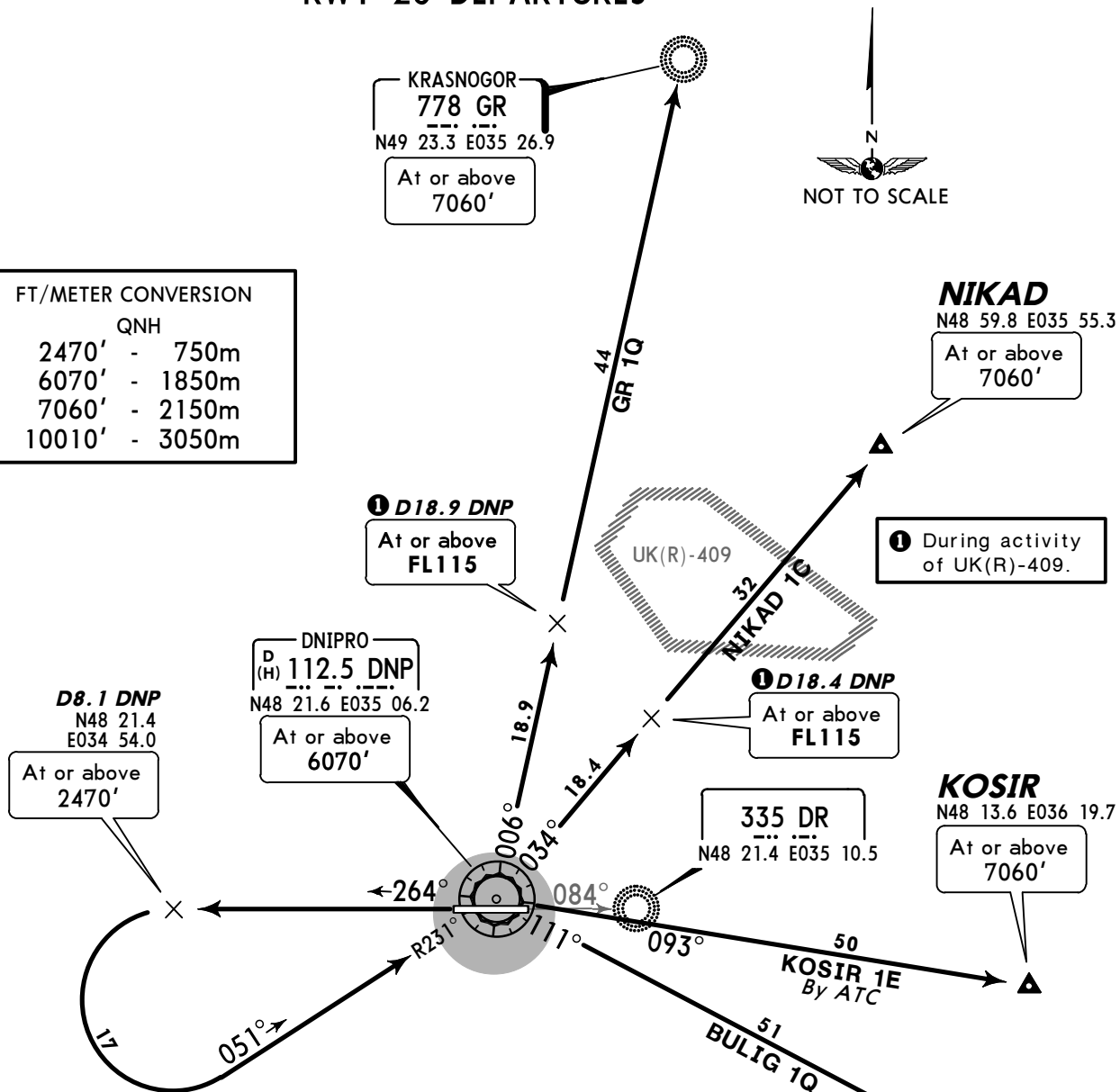
Trans level: By ATC Trans alt: 10010'



**BULIG ONE QUEBEC (BULIG 1Q) [BULI1Q]**  
**KOSIR ONE ECHO (KOSIR 1E) [KOSI1E]**  
**KRASNOGOR ONE QUEBEC (GR 1Q)**  
**NIKAD ONE CHARLIE (NIKAD 1C) [NIKA1C]**  
**RWY 26 DEPARTURES**

**FT/METER CONVERSION**

QNH	
2470'	- 750m
6070'	- 1850m
7060'	- 2150m
10010'	- 3050m



These SIDs require a minimum climb gradient of

**BULIG 1Q, KOSIR 1E**

5.0% up to 2470'.

**GR 1Q, NIKAD 1C**

5.0% up to FL115.

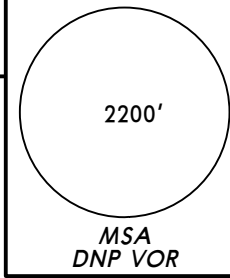
Gnd speed-KT	75	100	150	200	250	300
5.0% V/V (fpm)	380	456	760	1013	1266	1519

If unable advise ATC.

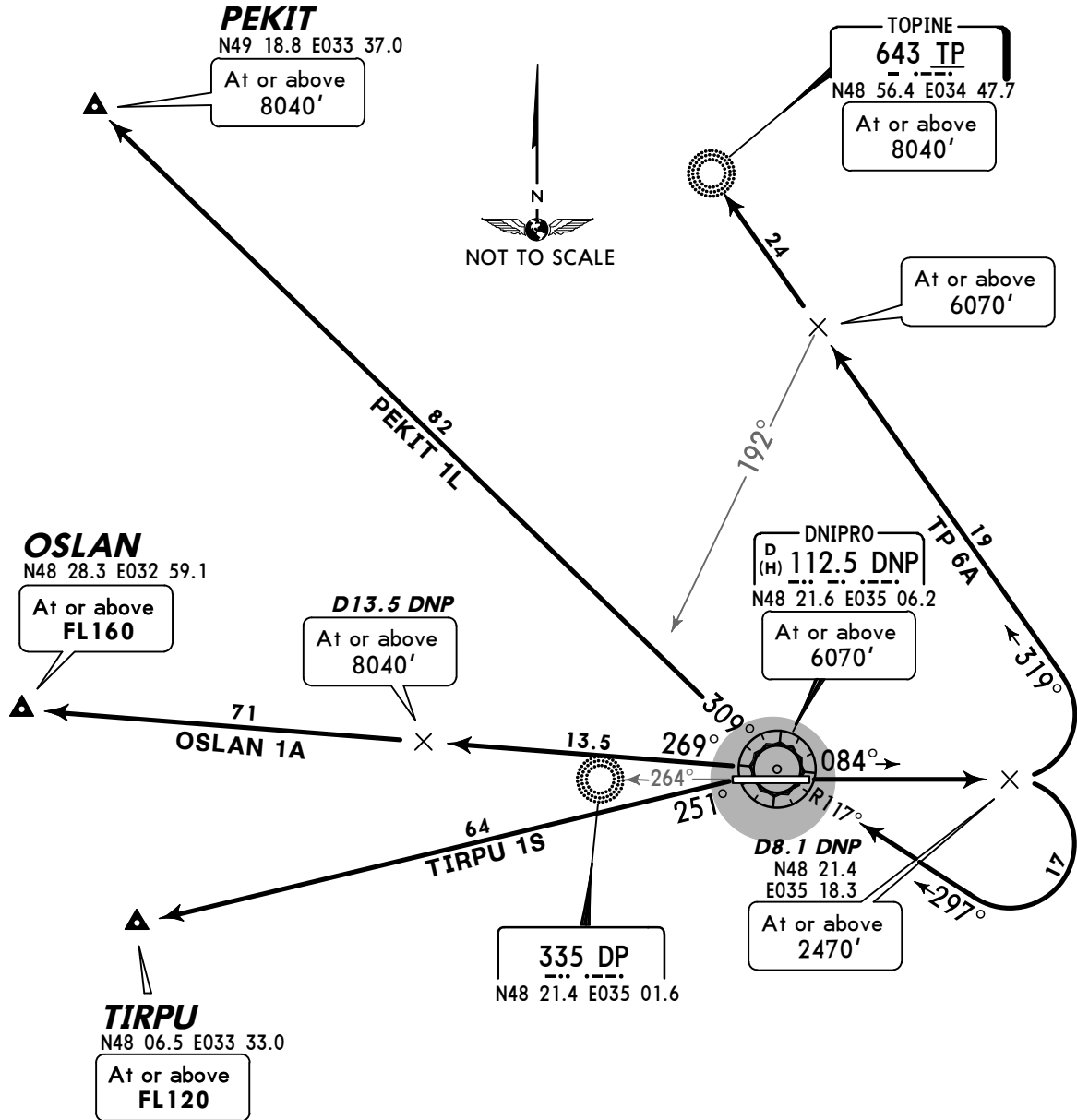
SID	ROUTING
<b>BULIG 1Q</b>	Climb on 264° bearing from DR to D8.1 DNP, turn LEFT, intercept DNP R-231 inbound to DNP, turn RIGHT, DNP R-111 to BULIG.
<b>GR 1Q</b>	Climb on 264° bearing from DR to D8.1 DNP, turn LEFT, intercept DNP R-231 inbound to DNP, turn LEFT, DNP R-006 to GR.
<b>KOSIR 1E BY ATC</b>	Climb on 264° bearing from DR to D8.1 DNP, turn LEFT, intercept DNP R-231 inbound to DNP, turn RIGHT, DNP R-093 to KOSIR.
<b>NIKAD 1C</b>	Climb on 264° bearing from DR to D8.1 DNP, turn LEFT, intercept DNP R-231 inbound to DNP, turn LEFT, DNP R-034 to NIKAD.

Apt Elev  
482'

Trans level: By ATC Trans alt: 10010'



OSLAN ONE ALFA (OSLAN 1A) [OSLA1A]  
PEKIT ONE LIMA (PEKIT 1L) [PEKI1L]  
TIRPU ONE SIERRA (TIRPU 1S) [TIRP1S]  
TOPINE SIX ALFA (TP 6A)  
RWY 08 DEPARTURES



These SIDs require a minimum climb gradient of 4.5% up to 2470'.

Gnd speed-KT	75	100	150	200	250	300
4.5% V/V (fpm)	342	456	684	911	1139	1367

If unable advise ATC.

FT/METER CONVERSION

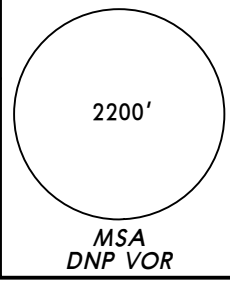
	QNH	
2470'	-	750m
6070'	-	1850m
8040'	-	2450m
10010'	-	3050m

SID	ROUTING
<b>OSLAN 1A</b>	Climb on 084° bearing from DP to D8.1 DNP, turn RIGHT, intercept DNP R-117 inbound to DNP, turn LEFT, DNP R-269 to OSLAN.
<b>PEKIT 1L</b>	Climb on 084° bearing from DP to D8.1 DNP, turn RIGHT, intercept DNP R-117 inbound to DNP, turn RIGHT, DNP R-309 to PEKIT.
<b>TIRPU 1S</b>	Climb on 084° bearing from DP to D8.1 DNP, turn RIGHT, intercept DNP R-117 inbound to DNP, turn LEFT, DNP R-251 to TIRPU.
<b>TP 6A</b>	Climb on 084° bearing from DP to D8.1 DNP, turn LEFT, intercept 319° bearing to TP.

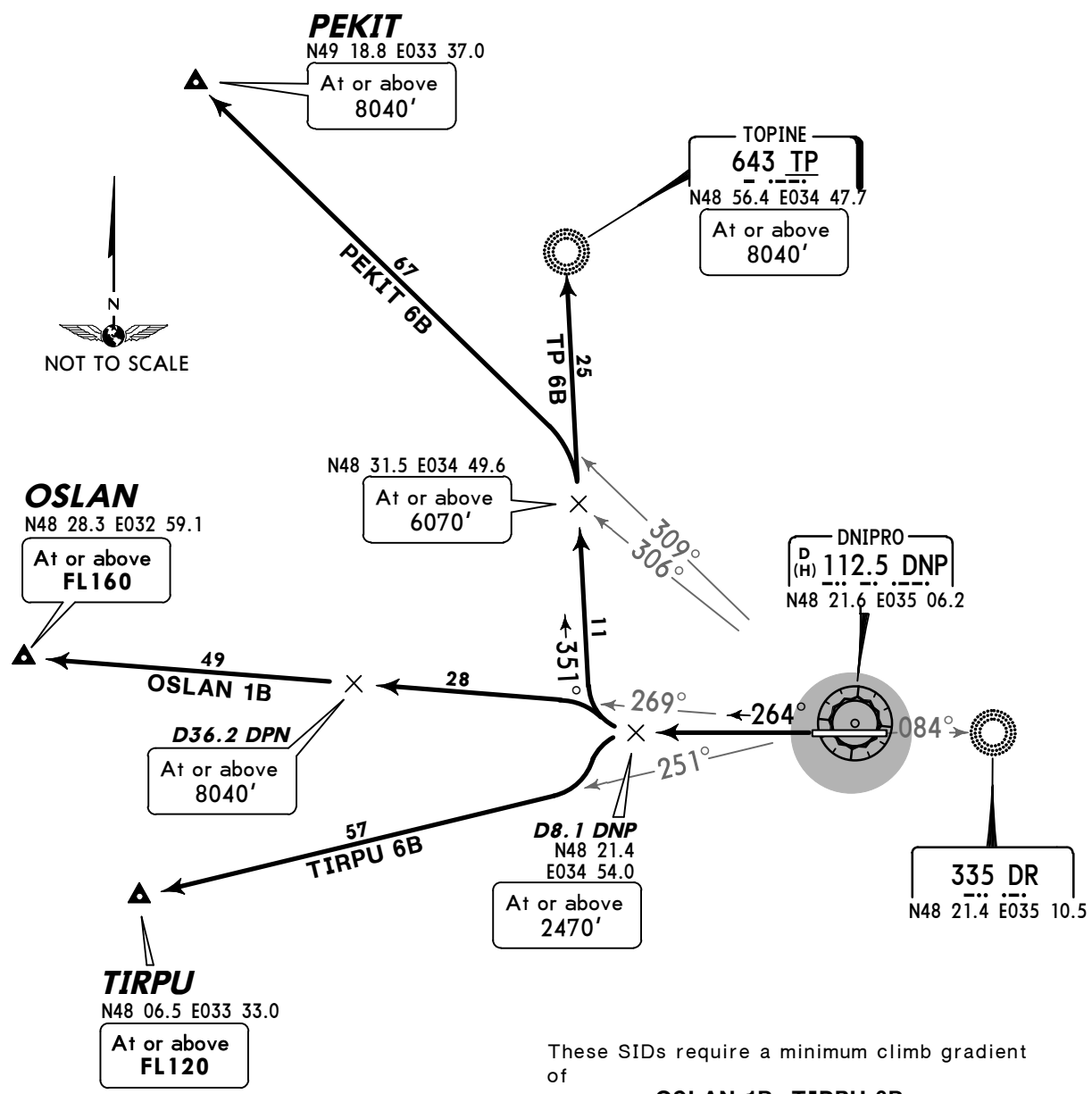


Apt Elev  
482'

Trans level: By ATC Trans alt: 10010'



OSLAN ONE BRAVO (OSLAN 1B) [OSLA1B]  
PEKIT SIX BRAVO (PEKIT 6B) [PEKI6B]  
TIRPU SIX BRAVO (TIRPU 6B) [TIRP6B]  
TOPINE SIX BRAVO (TP 6B)  
RWY 26 DEPARTURES



FT/METER CONVERSION

2470'	-	750m
6070'	-	1850m
8040'	-	2450m
10010'	-	3050m

QNH

These SIDs require a minimum climb gradient of

- OSLAN 1B, TIRPU 6B**  
5.0% up to 2470'.
- PEKIT 6B, TP 6B**  
5.0% up to 6070'.

Gnd speed-KT	75	100	150	200	250	300
5.0% V/V (fpm)	380	456	760	1013	1266	1519

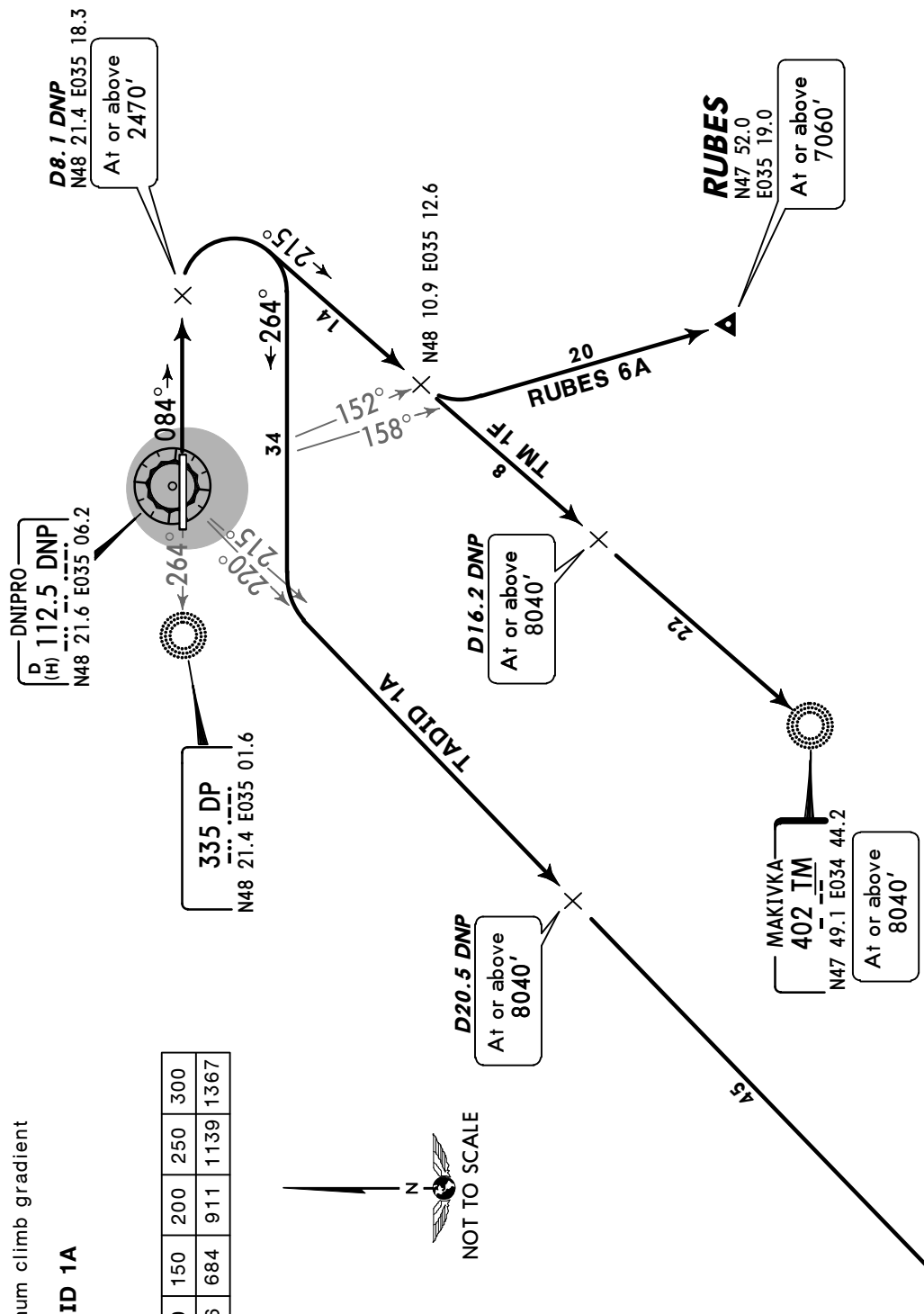
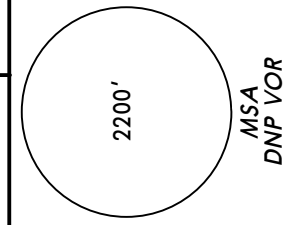
If unable advise ATC.

SID	ROUTING
<b>OSLAN 1B</b>	Climb on 264° bearing from DR to D8.1 DNP, turn RIGHT, intercept DNP R-269 to OSLAN.
<b>PEKIT 6B</b>	Climb on 264° bearing from DR to D8.1 DNP, turn RIGHT, intercept 351° bearing towards TP, when crossing DNP R-306 turn LEFT, intercept DNP R-309 to PEKIT.
<b>TIRPU 6B</b>	Climb on 264° bearing from DR to D8.1 DNP, turn LEFT, intercept DNP R-251 to TIRPU.
<b>TP 6B</b>	Climb on 264° bearing from DR to D8.1 DNP, turn RIGHT, intercept 351° bearing to TP.

Apt Elev  
482'

Trans level: By ATC Trans alt: 10010'

**MAKIVKA ONE FOXTROT (TM 1F)  
RUBES SIX ALFA (RUBES 6A) [RUBE6A]  
TADID ONE ALFA (TADID 1A) [TADI1A]  
RWY 08 DEPARTURES**



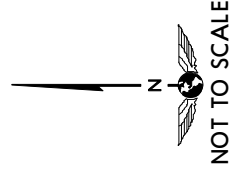
These SIDs require a minimum climb gradient of 4.5% up to 2470'.  
4.5% up to 8040'.  
If unable advise ATC.

**RUBES 6A, TADID 1A**

**TM 1F**

Gnd speed-KT	75	100	150	200	250	300
4.5% V/V (fpm)	342	456	684	911	1139	1367

If unable advise ATC.



**FT/METER CONVERSION**

QNH

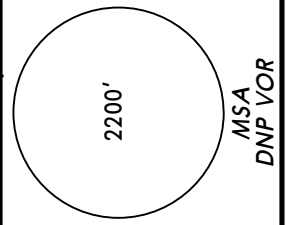
2470'	-	750m
7060'	-	2150m
8040'	-	2450m
10010'	-	3050m

**ROUTING**

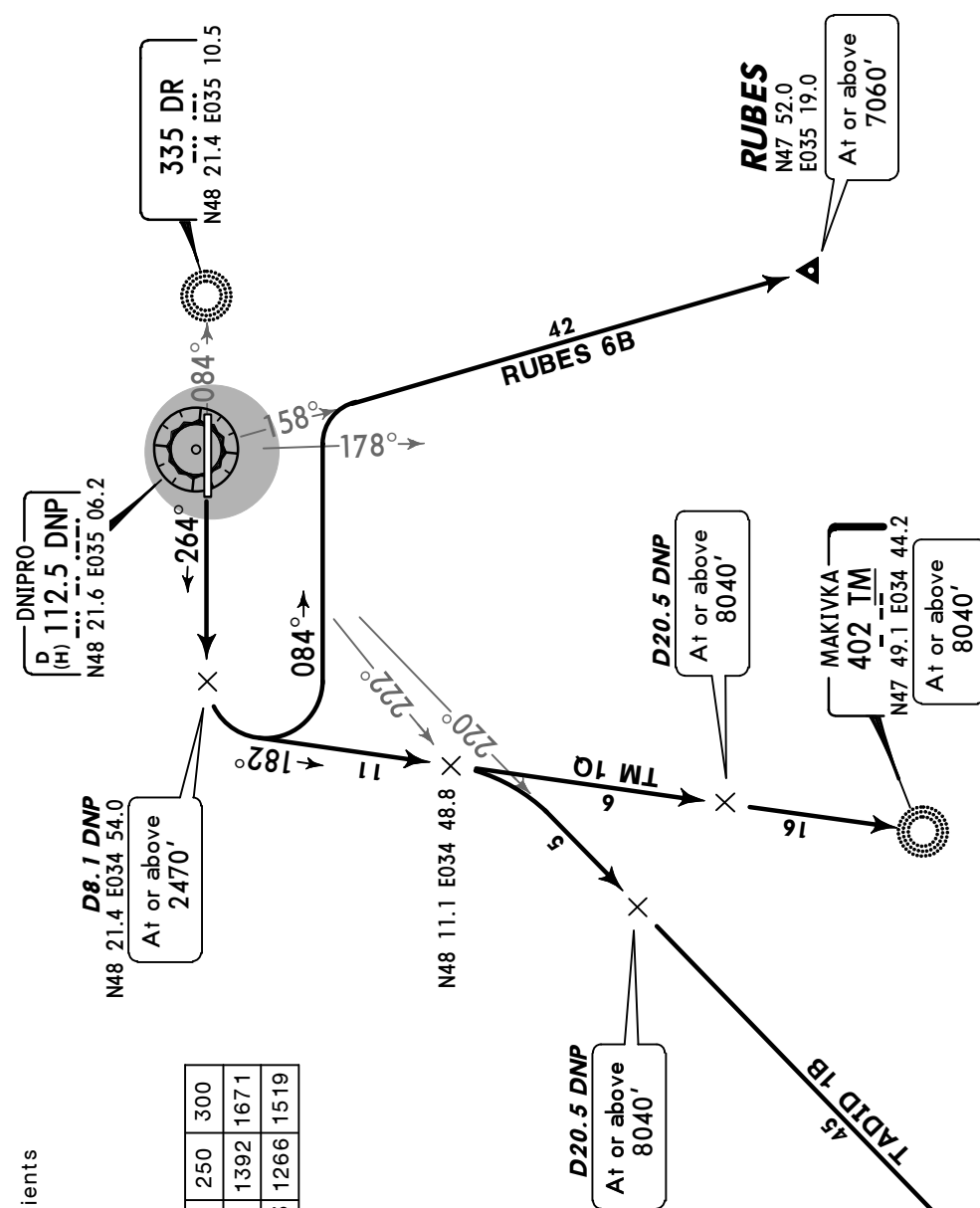
SID	ROUTING
<b>RUBES 6A</b>	Climb on 084° bearing from DP to D8.1 DNP, turn RIGHT, intercept 215° bearing towards TM, when crossing DNP R-152 turn LEFT, intercept DNP R-158 to RUBES.
<b>TADID 1A</b>	Climb on 084° bearing from DP to D8.1 DNP, turn RIGHT, 264° track, when crossing DNP R-215 turn LEFT, intercept DNP R-220 to TADID.
<b>TM 1F</b>	Climb on 084° bearing from DP to D8.1 DNP, turn RIGHT, intercept 215° bearing to TM.

Apt Elev  
482'

Trans level: By ATC Trans alt: 10010'



MAKIVKA ONE QUEBEC (TM 1Q)  
RUBES SIX BRAVO (RUBES 6B) [RUBE6B]  
TADID ONE BRAVO (TADID 1B) [TADI1B]  
RWY 26 DEPARTURES



These SIDs require minimum climb gradients of

**RUBES 6B**

5.0% up to 2470'

**TADID 1B, TM 1Q**

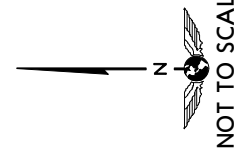
5.5% up to 8040'

Gnd speed-KT	75	100	150	200	250	300
5.5% V/V (fpm)	418	557	835	1114	1392	1671
5.0% V/V (fpm)	380	506	760	1013	1266	1519

If unable advise ATC.

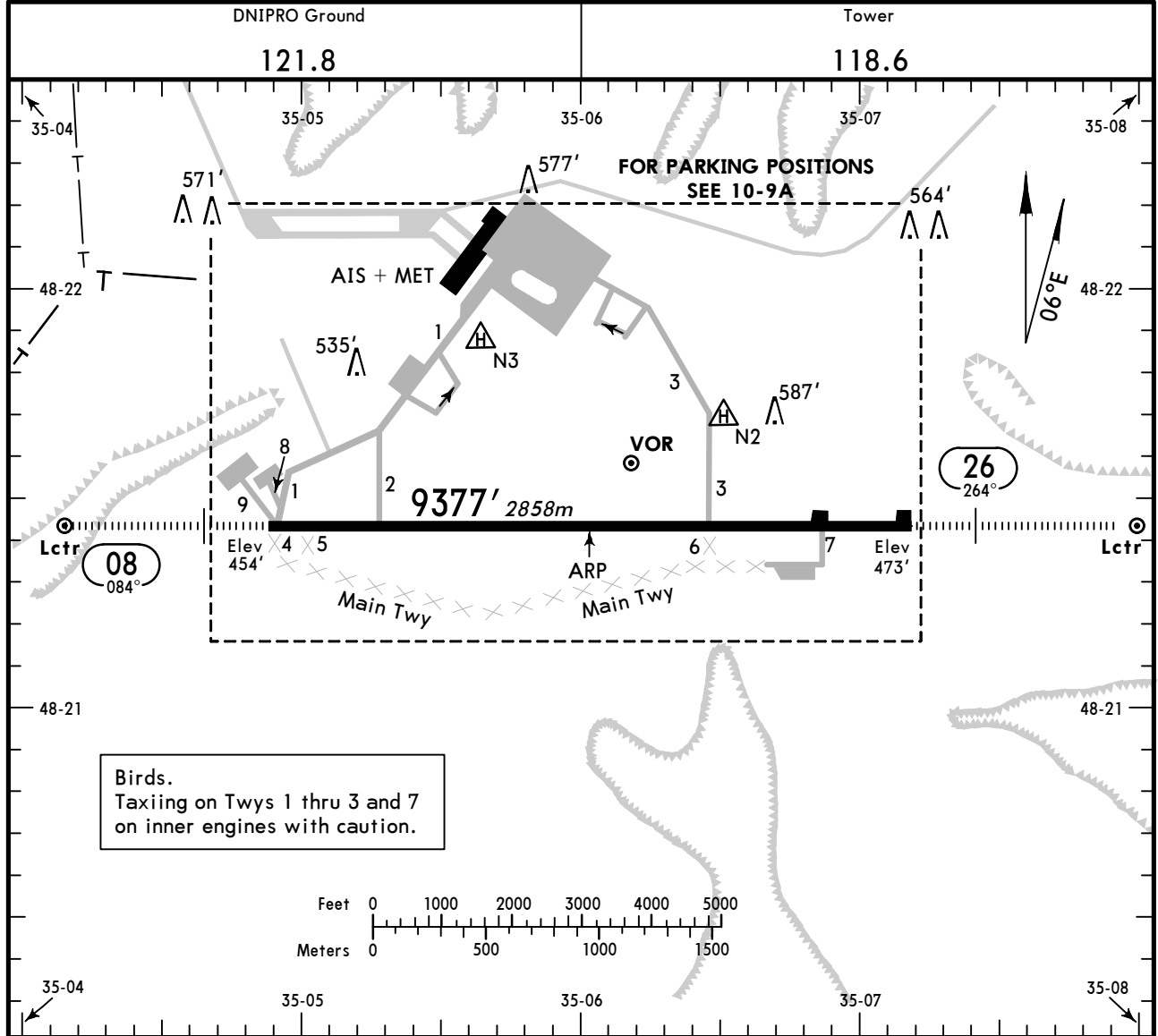
FT/METER CONVERSION

QNH	
2470'	- 750m
7060'	- 2150m
8040'	- 2450m
10010'	- 3050m



**ROUTING**

SID	ROUTING
RUBES 6B	Climb on 264° bearing from DR to D8.1 DNP, turn LEFT, 084° track, when crossing DNP R-178 turn RIGHT, intercept DNP R-158 to RUBES.
TADID 1B	Climb on 264° bearing from DR to D8.1 DNP, turn LEFT, intercept 182° bearing towards TM, when crossing DNP R-222 turn RIGHT, intercept DNP R-220 to TADID.
TM 1Q	Climb on 264° bearing from DR to D8.1 DNP, turn LEFT, intercept 182° bearing to TM.



ADDITIONAL RUNWAY INFORMATION

RWY	HIRL (60m) HIALS PAPI-L (angle 2.83°) RVR	USABLE LENGTHS		TAKE-OFF	WIDTH
		Threshold	Glide Slope		
08	HIRL (60m) HIALS PAPI-L (angle 2.83°) RVR		8256' 2516m	1	144'
26	HIRL (60m) HIALS PAPI-L (angle 3.0°) RVR		8538' 2602m		44m

1 TAKE-OFF RUN AVAILABLE

**RWY 08:** From rwy head 9377' (2858m) twy 2 int 7710' (2350m)

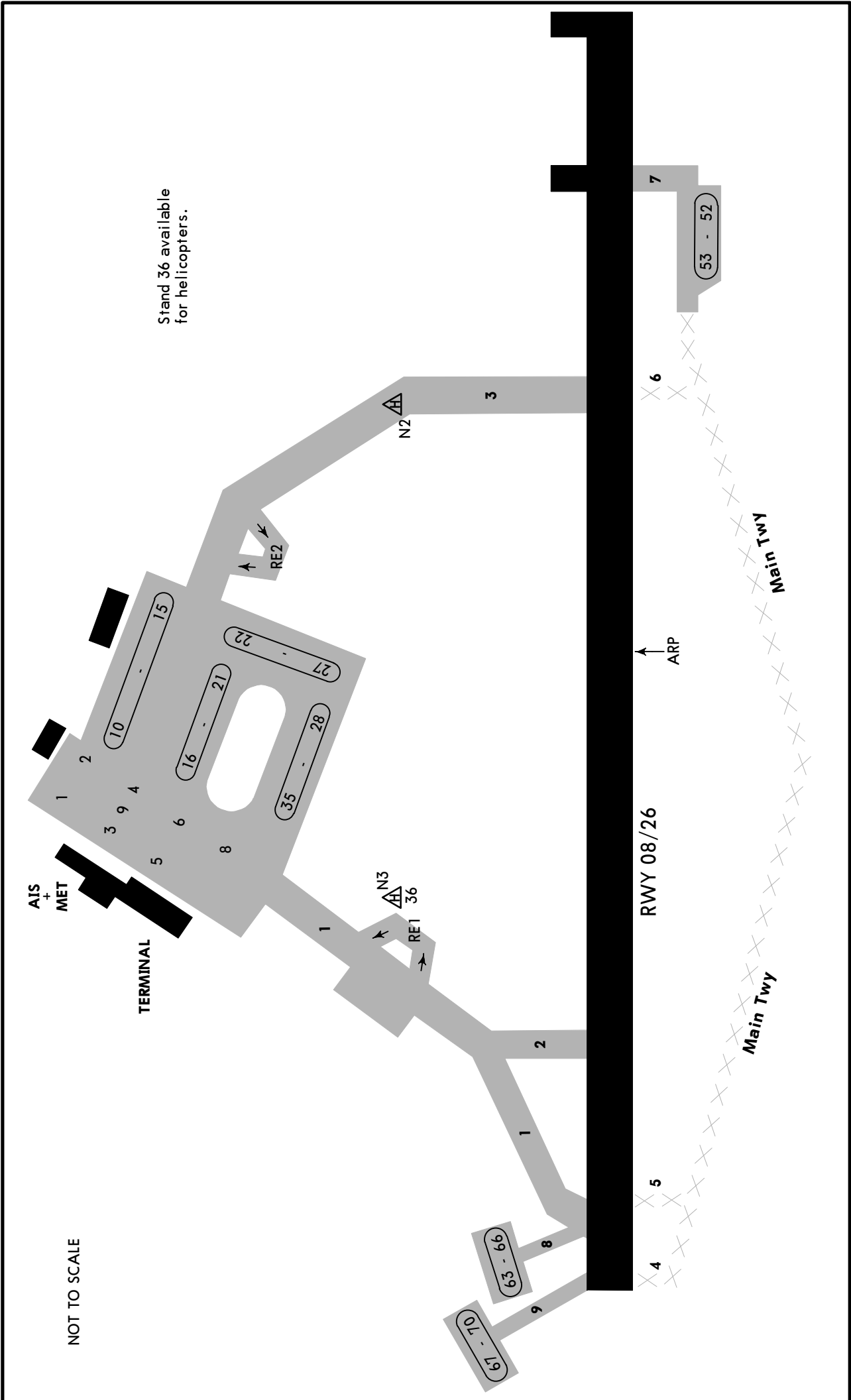
**RWY 26:** From rwy head 9377' (2858m) twy 3 int 6562' (2000m)

JAR-OPS

TAKE-OFF 1

	All Rwys		
	LVP must be in force	RCLM (DAY only) or RL	NIL (DAY only)
A	250m	400m	500m
B			
C			
D			

1 Operators applying U.S. Ops Specs: CL required below 300m.



CHANGES: Grass rwy & parking stands 7, 37 thru 51 withdrawn.

STRAIGHT-IN RWY		A	B	C	D
08	ILS	654'(200')	654'(200')	654'(200')	660'(206')
	FULL	R550m	R550m	R550m	R550m
	Limited	R750m	R750m	R750m	R750m
	ALS out	R1200m	R1200m	R1200m	R1200m
	LOC	NOT AUTH	NOT AUTH	NOT AUTH	NOT AUTH
	VOR ①	830'(376')	830'(376')	830'(376')	830'(376')
ALS out	R1000m	R1000m	R1000m	R1000m	
	R1500m	R1500m	R1700m	R1700m	
NDB ①②	830'(376')	830'(376')	830'(376')	830'(376')	
	R1000m	R1000m	R1000m	R1000m	
ALS out	R1500m	R1500m	R1700m	R1700m	
	NDB ①③	870'(416')	870'(416')	870'(416')	870'(416')
ALS out	R1200m	R1200m	R1200m	R1200m	
	R1900m	R1900m	R1900m	R1900m	
26	ILS	673'(200')	673'(200')	673'(200')	673'(200')
	FULL	R550m	R550m	R550m	R550m
	Limited	R750m	R750m	R750m	R750m
	ALS out	R1200m	R1200m	R1200m	R1200m
	LOC	NOT AUTH	NOT AUTH	NOT AUTH	NOT AUTH
	VOR ①	840'(367')	840'(367')	840'(367')	840'(367')
ALS out	R1000m	R1000m	R1000m	R1000m	
	R1500m	R1500m	R1700m	R1700m	
NDB ①②	840'(367')	840'(367')	840'(367')	840'(367')	
	R1000m	R1000m	R1000m	R1000m	
ALS out	R1500m	R1500m	R1700m	R1700m	
	NDB ①③	890'(417')	890'(417')	890'(417')	890'(417')
ALS out	R1200m	R1200m	R1200m	R1200m	
	R1900m	R1900m	R1900m	R1900m	

① Continuous Descent Final Approach.

② with DME.

③ w/o DME.

CIRCLE-TO-LAND ④	100 KT	135 KT	180 KT	205 KT
After apch to rwy 08 ⑤	910'(456')	1070'(616')	1200'(746')	1500'(1046')
After apch to rwy 26 ⑥	910'(437')	1070'(597')	1200'(727')	1500'(1027')
	V1500m ⑦	V1600m ⑦	V2400m	V3600m

④ Not authorized North of airport between R-280 and R-045 DNP.

⑤ Circling height based on rwy 08 thresh elev of 454'.

⑥ Circling height based on rwy 26 thresh elev of 473'.

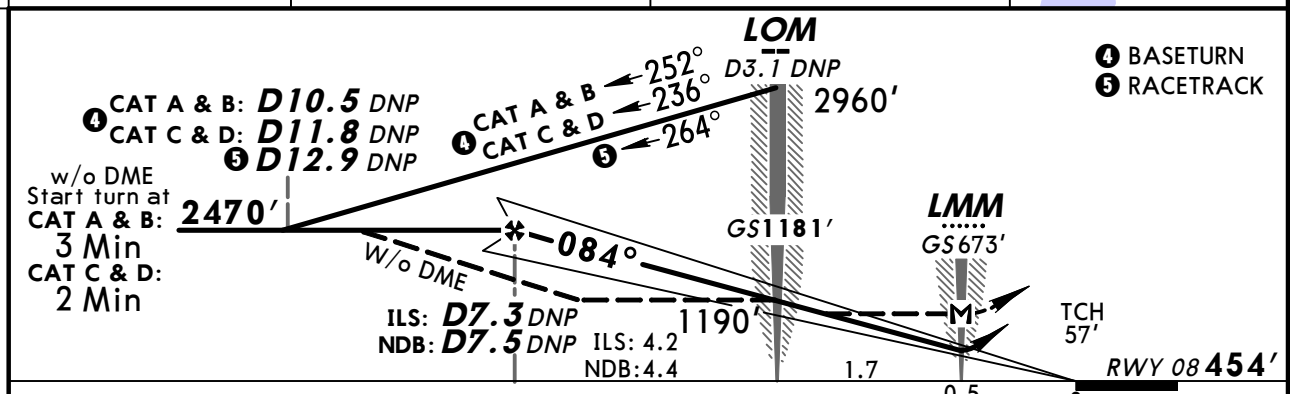
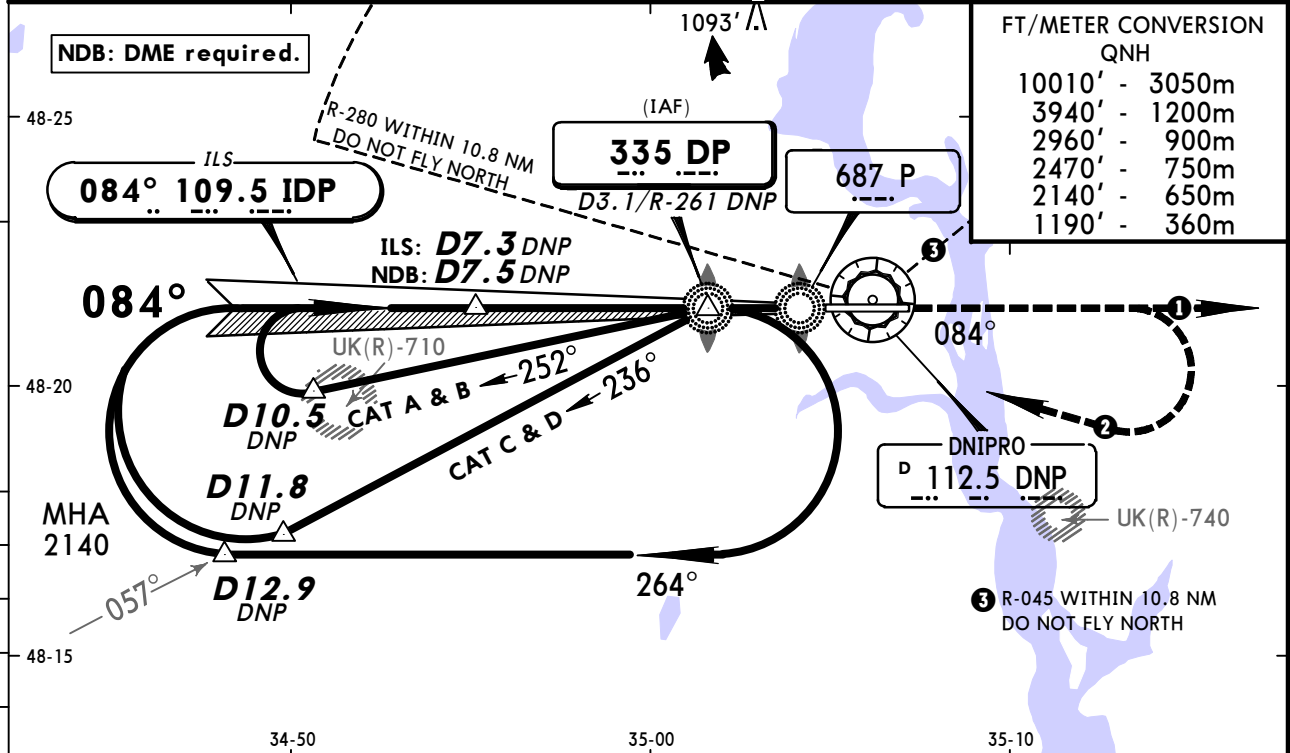
⑦ or higher minimums of preceding straight-in approach.

## TAKE-OFF RWY 08, 26

LVP must be in Force			
	RCLM (DAY only) or RL	RCLM (DAY only) or RL	NIL (DAY only)
A			
B	250m	400m	500m
C			
D	300m		

DNIPRO Radar (APP) 119.4		DNIPRO Tower 118.6		Ground 121.8	
LOC IDP <b>109.5</b>	Final Apch Crs <b>084°</b>	GS LOM <b>1181'</b> (727')	ILS DA(H) Refer to Minimums	Apt Elev <b>482'</b>	
NDB DP <b>335</b>		Minimum Alt <b>D7.5 DNP</b> <b>2470'</b> (2016')	MDA(H) (CONDITIONAL) <b>830'</b> (376')	RWY <b>454'</b>	
MISSED APCH: ① Climb on 084° to 2140', then as directed. MISSED APCH WITH COMM FAILURE: ② Climb on 084° to 2140', then turn RIGHT to DP Lctr climbing to 3940', then according to chart.					2200'  MSA DNP VOR

Alt Set: hPa (MM on req) Rwy Elev: 17 hPa Trans level: By ATC Trans alt: 10010'



Gnd speed-Kts	70	90	100	120	140	160	HIALS PAPI 2140' ↑ on 084°
ILS GS or NDB Desc angle 2.83°	350	451	501	601	701	801	
MAP at LMM							

JAR-OPS STRAIGHT-IN LANDING RWY 08 ①						CIRCLE-TO-LAND ②	
ILS		NDB		w/o DME		Not authorized North of airport between R-280 and R-045	
DA(H) ABC: <b>654'</b> (200')		with DME MDA(H) <b>830'</b> (376')		w/o DME MDA(H) <b>870'</b> (416')			
D: <b>660'</b> (206')							
	FULL	ALS out	ALS out	ALS out	ALS out	Max Kts	MDA(H) VIS
A			RVR 900m	RVR 1500m	RVR 900m	100	<b>910'</b> (456') 1500m
B	RVR 550m					135	<b>1070'</b> (616') 1600m
C		RVR 1000m	RVR 1000m	RVR 1800m	RVR 1000m	180	<b>1200'</b> (746') 2400m
D	RVR 600m		RVR 1400m	RVR 2000m	RVR 1400m	205	<b>1500'</b> (1046') 3600m

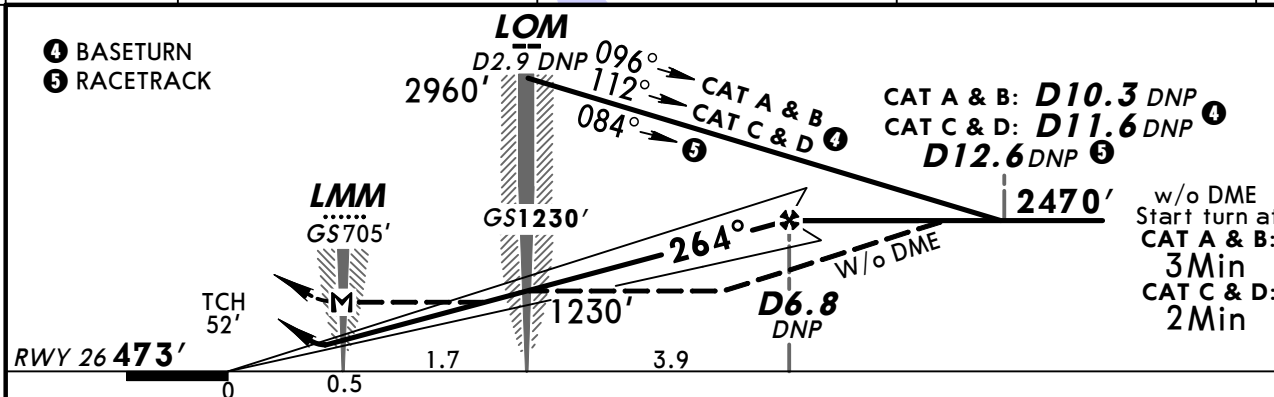
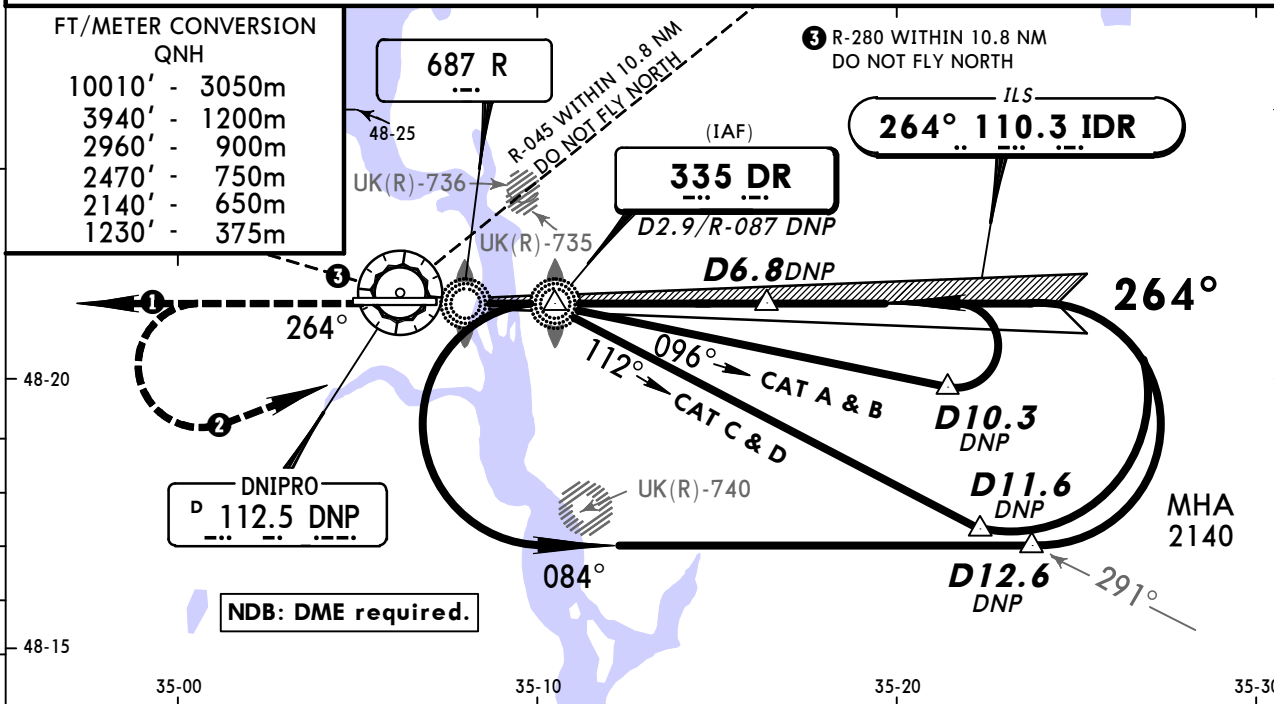
① LOC (GS out): NOT AUTHORIZED. ② Circling height based on rwy 08 thresh elev of 454'.

DNIPRO Radar (APP) 119.4		DNIPRO Tower 118.6		Ground 121.8	
LOC IDR <b>110.3</b>	Final Apch Crs <b>264°</b>	GS LOM <b>1230'</b> (757')	ILS DA(H) <b>673'</b> (200')	Apt Elev <b>482'</b>	
NDB DR <b>335</b>		Minimum Alt <b>D6.8 DNP</b> <b>2470'</b> (1997')	MDA(H) (CONDITIONAL) <b>840'</b> (367')	RWY <b>473'</b>	
<b>MISSED APCH: ❶</b> Climb on 264° to 2140', then as directed. <b>MISSED APCH WITH COMM FAILURE: ❷</b> Climb on 264° to 2140', then turn LEFT to DR Lctr climbing to 3940', then according to chart.					

Alt Set: hPa (MM on req) Rwy Elev: 17 hPa Trans level: By ATC Trans alt: 10010'  
Ground proximity warning system short term alerting is possible on final apch between 990' and 660' due to terrain.

FT/METER CONVERSION

QNH	
10010'	- 3050m
3940'	- 1200m
2960'	- 900m
2470'	- 750m
2140'	- 650m
1230'	- 375m



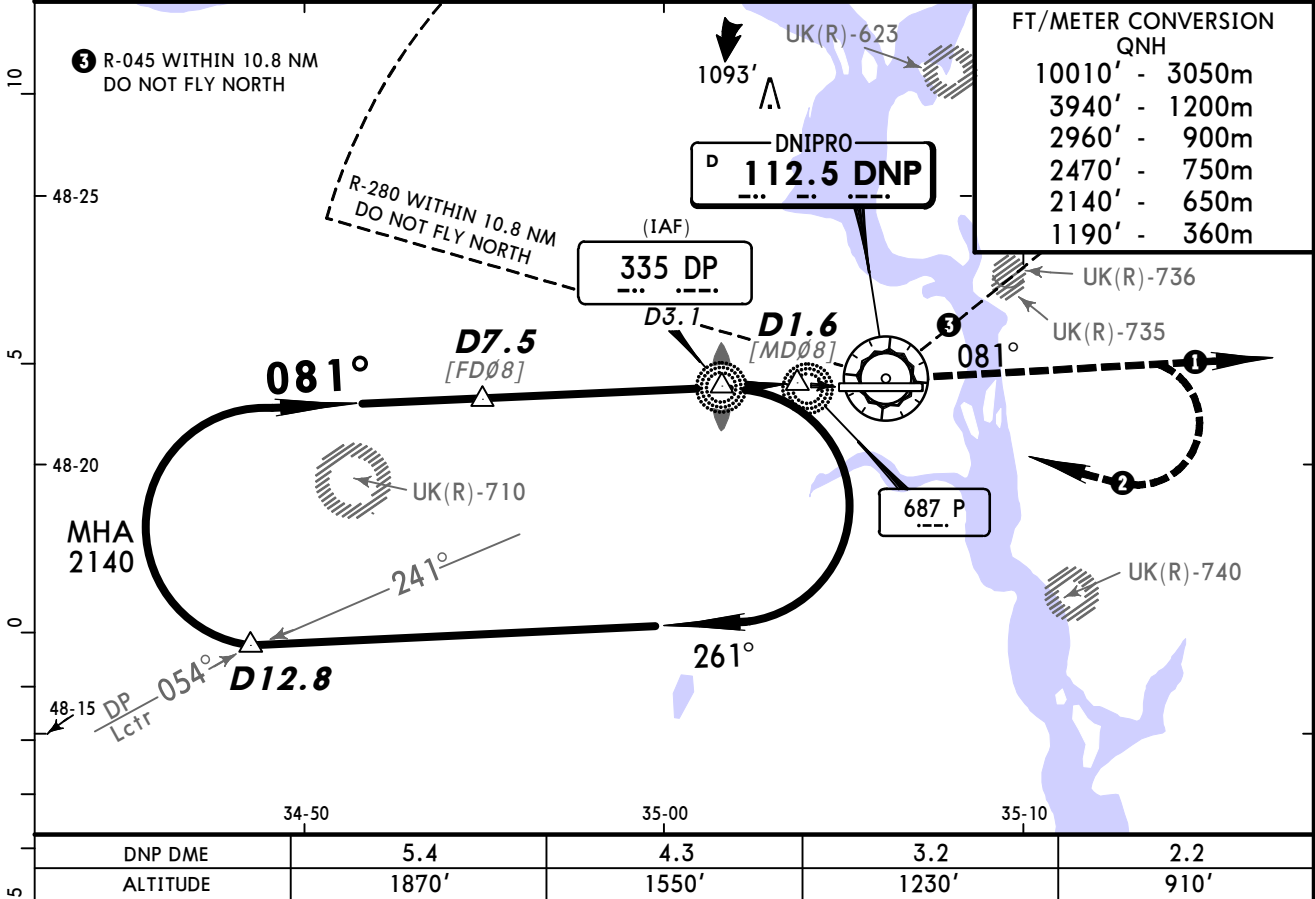
Gnd speed-Kts	70	90	100	120	140	160	HIALS PAPI 2140' ↑ on 264°
ILS GS or NDB Desc angle 3.00°	372	478	531	637	743	849	
MAP at LMM							

JAR-OPS						STRAIGHT-IN LANDING RWY 26 ❶		CIRCLE-TO-LAND ❷	
ILS		NDB				Not authorized North of airport between R-280 and R-045			
		with DME		w/o DME					
DA(H) <b>673'</b> (200')		MDA(H) <b>840'</b> (367')		MDA(H) <b>890'</b> (417')					
FULL		ALS out		ALS out		ALS out		Max Kts	
A		RVR 900m	RVR 1500m	RVR 900m	RVR 1500m	100	910'	(437')	1500m
B						135	1070'	(597')	1600m
C	RVR 550m	RVR 1000m	RVR 1000m	RVR 1800m	RVR 1000m	180	1200'	(727')	2400m
D			RVR 1400m	RVR 2000m	RVR 1400m	205	1500'	(1027')	3600m

❶ LOC (GS out): NOT AUTHORIZED. ❷ Circling height based on rwy 26 thresh elev of 473'.

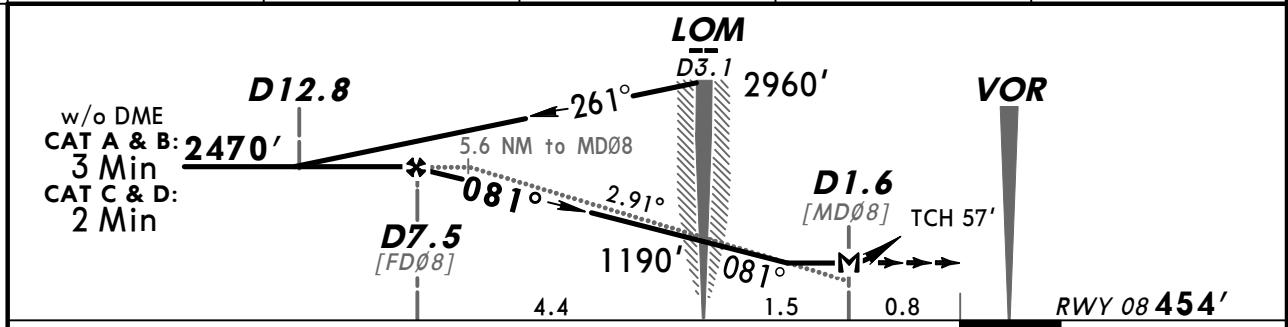


DNIPRO Radar (APP) 119.4		DNIPRO Tower 118.6		Ground 121.8		2200'
VOR DNP 112.5	Final Apch Crs 081°	Minimum Alt D7.5 2470' (2016')	MDA(H) 830' (376')	Apt Elev 482' RWY 454'		
<b>MISSED APCH: ① Climb on 081° to 2140', then as directed.</b> <b>MISSED APCH WITH COMM FAILURE: ② Climb on 081° to 2140', then turn RIGHT to DP Lctr climbing to 3940', then according to chart.</b>						
Alt Set: hPa (MM on req) DME required.		Rwy Elev: 17 hPa		Trans level: By ATC		Trans alt: 10010'



FT/METER CONVERSION  
QNH

10010'	3050m
3940'	1200m
2960'	900m
2470'	750m
2140'	650m
1190'	360m



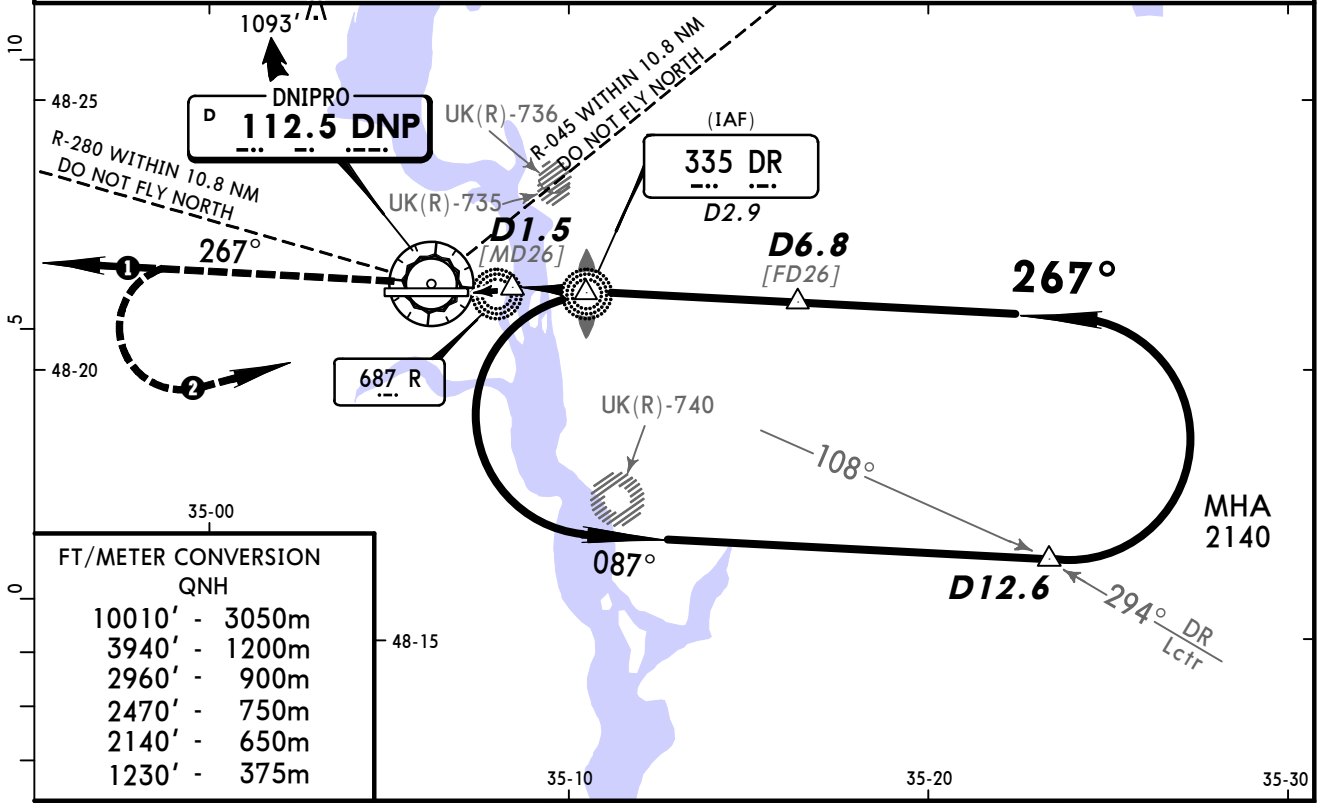
HIALS	2140'	on 081°
PAPI		

JAR-OPS STRAIGHT-IN LANDING RWY 08			CIRCLE-TO-LAND		
MDA(H) 830' (376')			Not authorized North of airport between R-280 and R-045		
		ALS out	Max Kts.	MDA(H)	VIS
A	RVR 900m	RVR 1500m	100	910' (456')	1500m
B		RVR 1800m	135	1070' (616')	1600m
C	RVR 1000m	RVR 2000m	180	1200' (746')	2400m
D	RVR 1400m		205	1500' (1046')	3600m

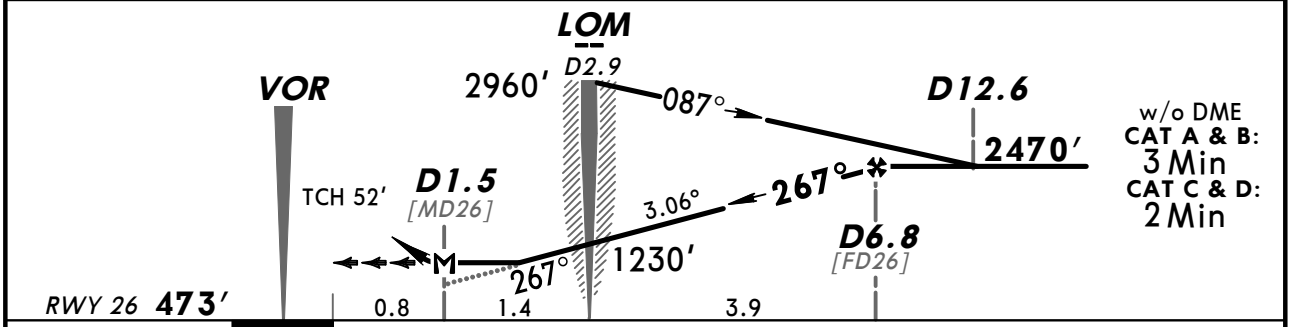
① Circling height based on rwy 08 thresh elev of 454'.

DNIPRO Radar (APP) 119.4		DNIPRO Tower 118.6		Ground 121.8	2200'
VOR DNP 112.5	Final Apch Crs 267°	Minimum Alt D6.8 2470' (1997')	MDA(H) 840' (367')	Apt Elev 482' RWY 473'	
<b>MISSED APCH: ① Climb on 267° to 2140', then as directed.</b> <b>MISSED APCH WITH COMM FAILURE: ② Climb on 267° to 2140', then turn LEFT to DR Lctr climbing to 3940', then according to chart.</b>					

Alt Set: hPa (MM on req) Rwy Elev: 17 hPa Trans level: By ATC Trans alt: 10010'  
 1. DME required. 2. Ground proximity warning system short term alerting is possible on final apch between 990' and 660' due to terrain.



DNP DME	2.2	3.2	4.3	5.4
ALTITUDE	1010'	1350'	1690'	2040'



Gnd speed-Kts	70	90	100	120	140	160	HIALS PAPI 2140' on 267°
Descent angle 3.06°	379	487	541	650	758	866	
MAP at D1.5							

JAR-OPS STRAIGHT-IN LANDING RWY 26			CIRCLE-TO-LAND		
MDA(H) 840' (367')			Not authorized North of airport between R-280 and R-045		
		ALS out	Max Kts.	MDA(H)	VIS
A	RVR 900m	RVR 1500m	100	910' (437')	1500m
B			135	1070' (597')	1600m
C	RVR 1000m	RVR 1800m	180	1200' (727')	2400m
D	RVR 1400m	RVR 2000m	205	1500' (1027')	3600m

■ Circling height based on rwy 26 thresh elev of 473'.  
 CHANGES: MDA(H). Descent angle. © JEPPESEN, 2003, 2012. ALL RIGHTS RESERVED.

## Chart changes since cycle 07-2012

ADD = added chart, REV = revised chart, DEL = deleted chart.

ACT	PROCEDURE IDENT	INDEX	REV DATE	EFF DATE
-----	-----------------	-------	----------	----------

**DNIPROPETROVS'K, (DNIPROPETROVS'K - UKDD)**

## **TERMINAL CHART CHANGE NOTICES**

**No Chart Change Notices for Airport UKDD**