

Page 1

Changed chart(s) since Disc 02-2008

ADD = Added chart, REV = Revised chart, DEL = Deleted chart.

ACT	PROCEDURE IDENT	INDEX	REV DATE	EFF DATE
-----	-----------------	-------	----------	----------

No revision activity since Disc 02-2008

TERMINAL CHART NOTAMs

No Chart NOTAMs for Airport UKOO

General Info

Odesa, UKR

N 46° 25.6' E 30° 40.7' Mag Var: 4.7°E

Elevation: 172'

Public, Control Tower, IFR, No Fee, Customs

Fuel: 115-145, Jet A-1

Repairs: Minor Airframe, Minor Engine

Time Zone Info: GMT+2:00 uses DST

Runway Info

Runway 16-34 9186' x 184' asphalt

Runway 16 (160.0°M) TDZE 172'

Lights: Edge, ALS

Runway 34 (340.0°M) TDZE 165'

Lights: Edge, ALS

Communications Info

ATIS **124.8**

Odesa Tower **125.5**

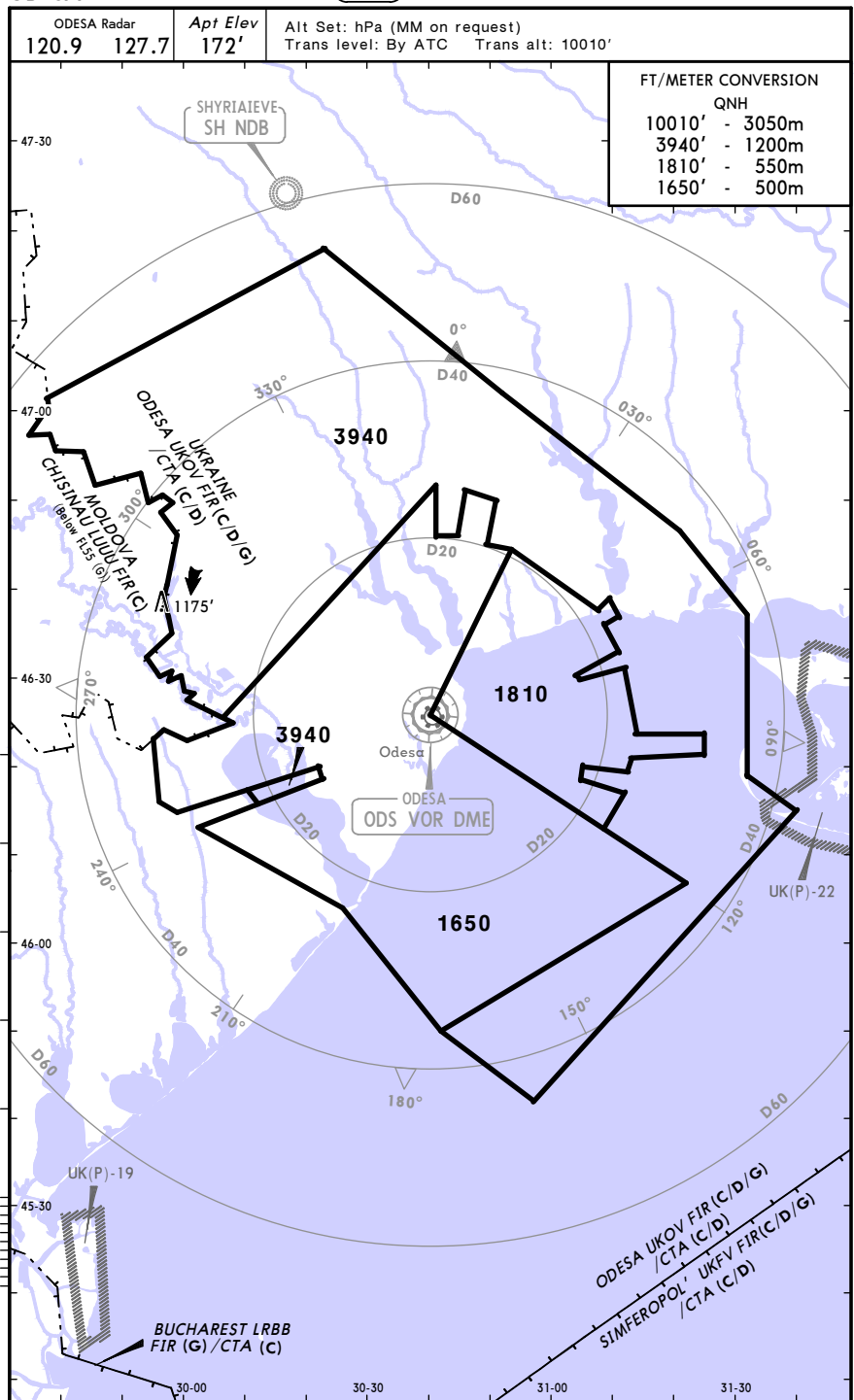
Odesa Ground Control **121.8**

Odesa Radar Approach Control **127.7**

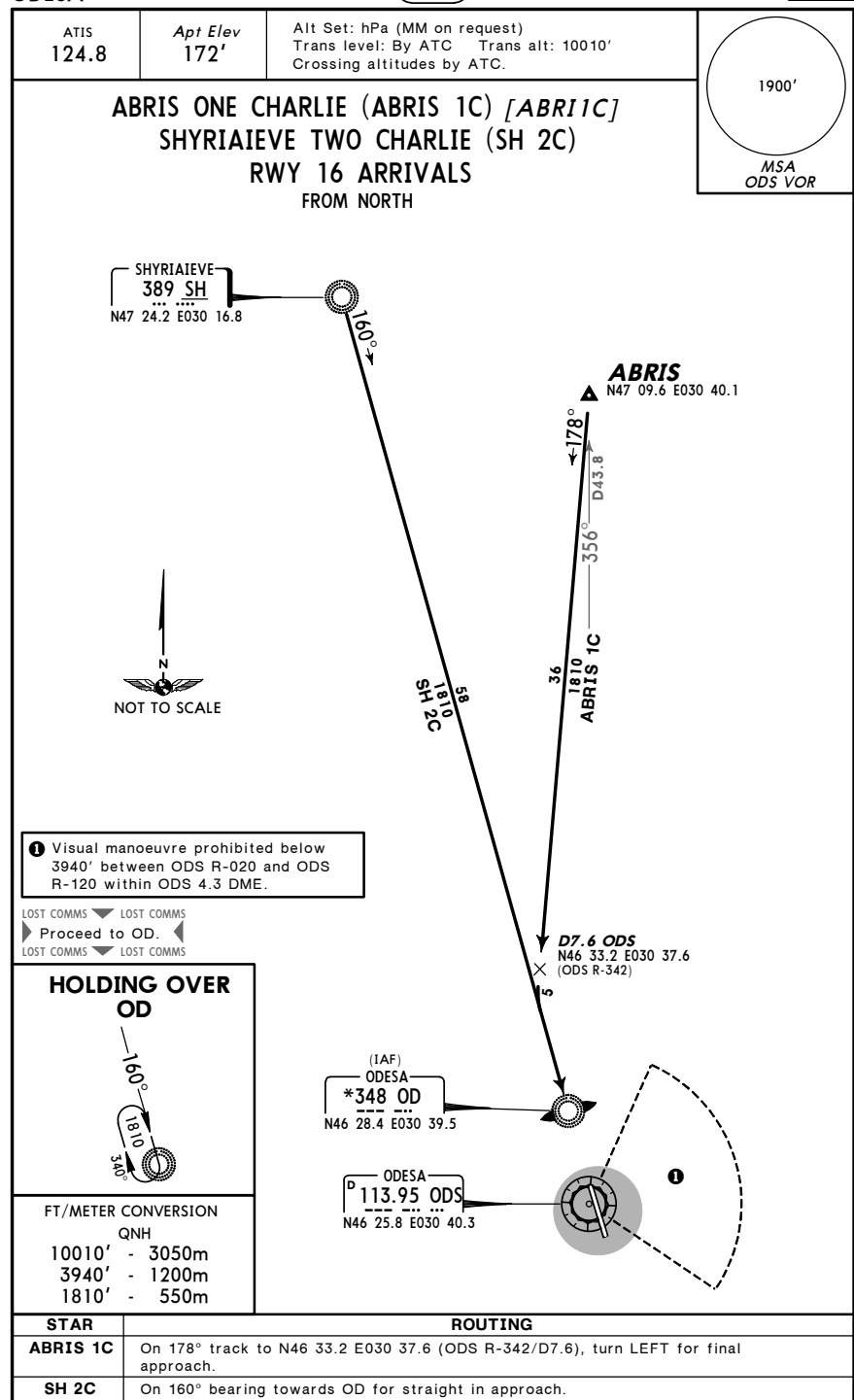
Odesa Radar Approach Control **120.9**

Notebook Info

UKOO/ODS ODESA 26 OCT 07 (10-1R) **JEPPESEN** ODESA, UKRAINE **STAR** **RADAR MINIMUM ALTITUDES**



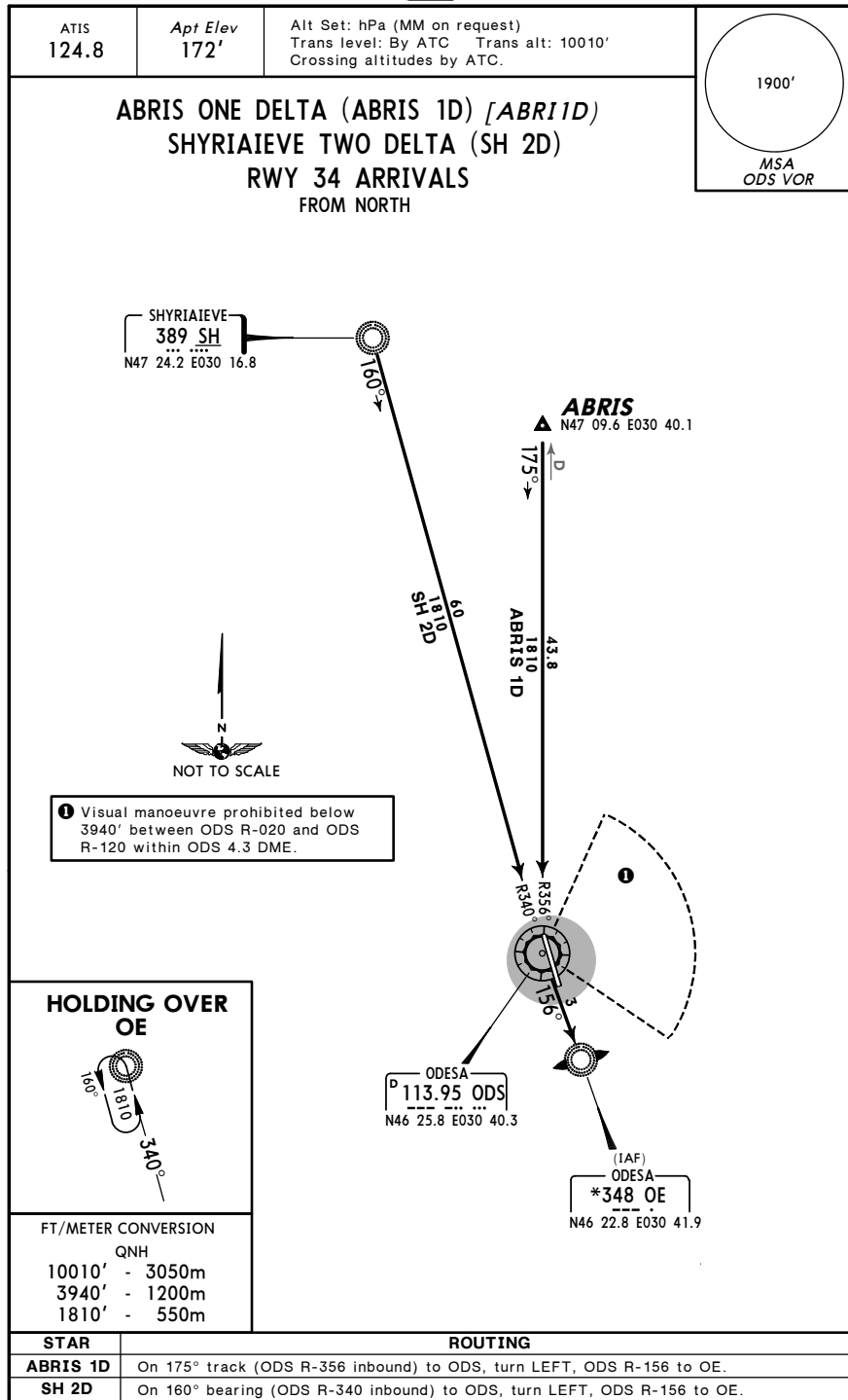
UKOO/ODS ODESA 26 OCT 07 (10-2) **JEPPESEN** ODESA, UKRAINE **STAR**



UK00/ODS
 ODESA

JEYPESEN
 26 OCT 07 **(10-2A)**

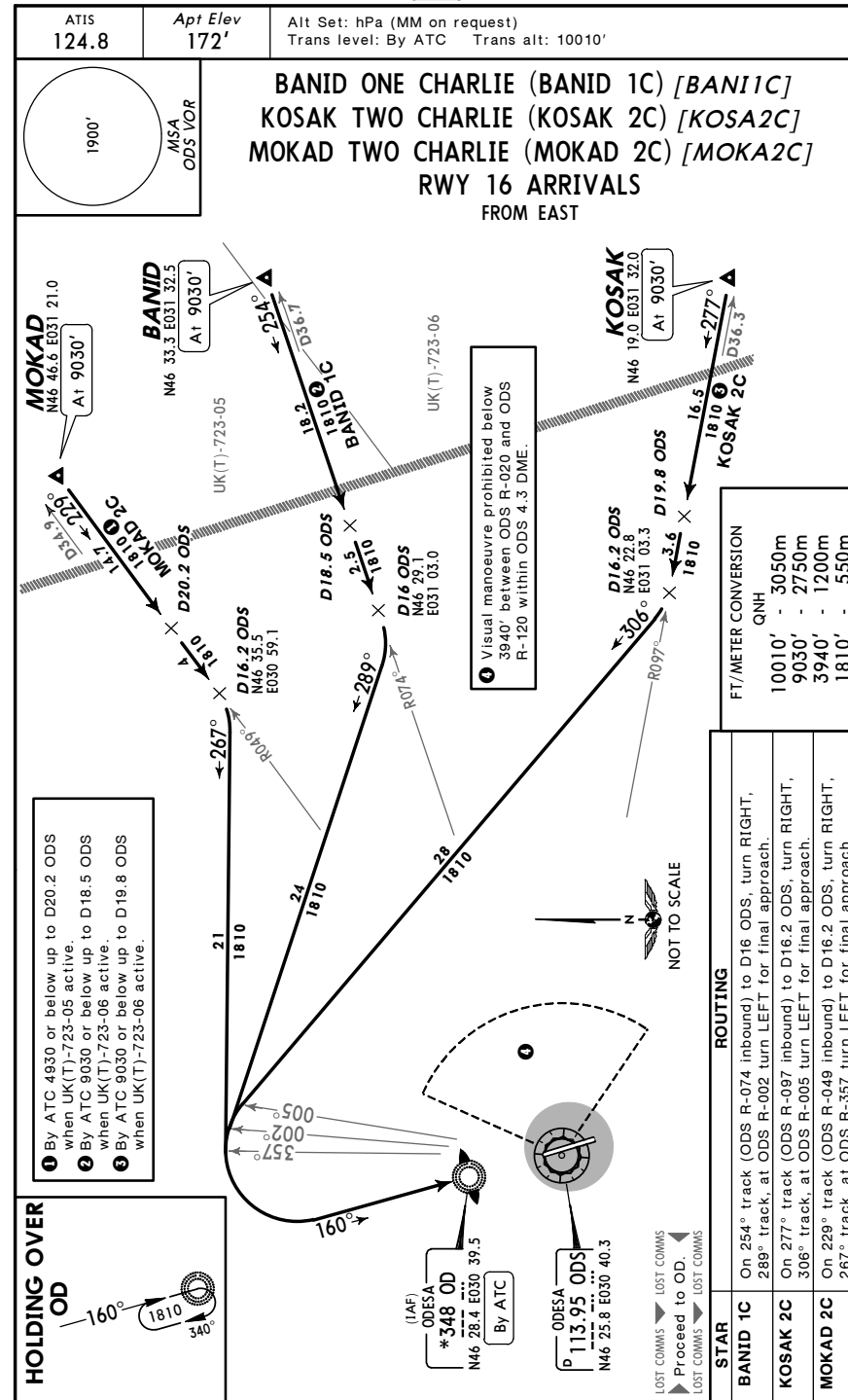
ODESA, UKRAINE
STAR



UK00/ODS
 ODESA

JEYPESEN
 26 OCT 07 **(10-2B)**

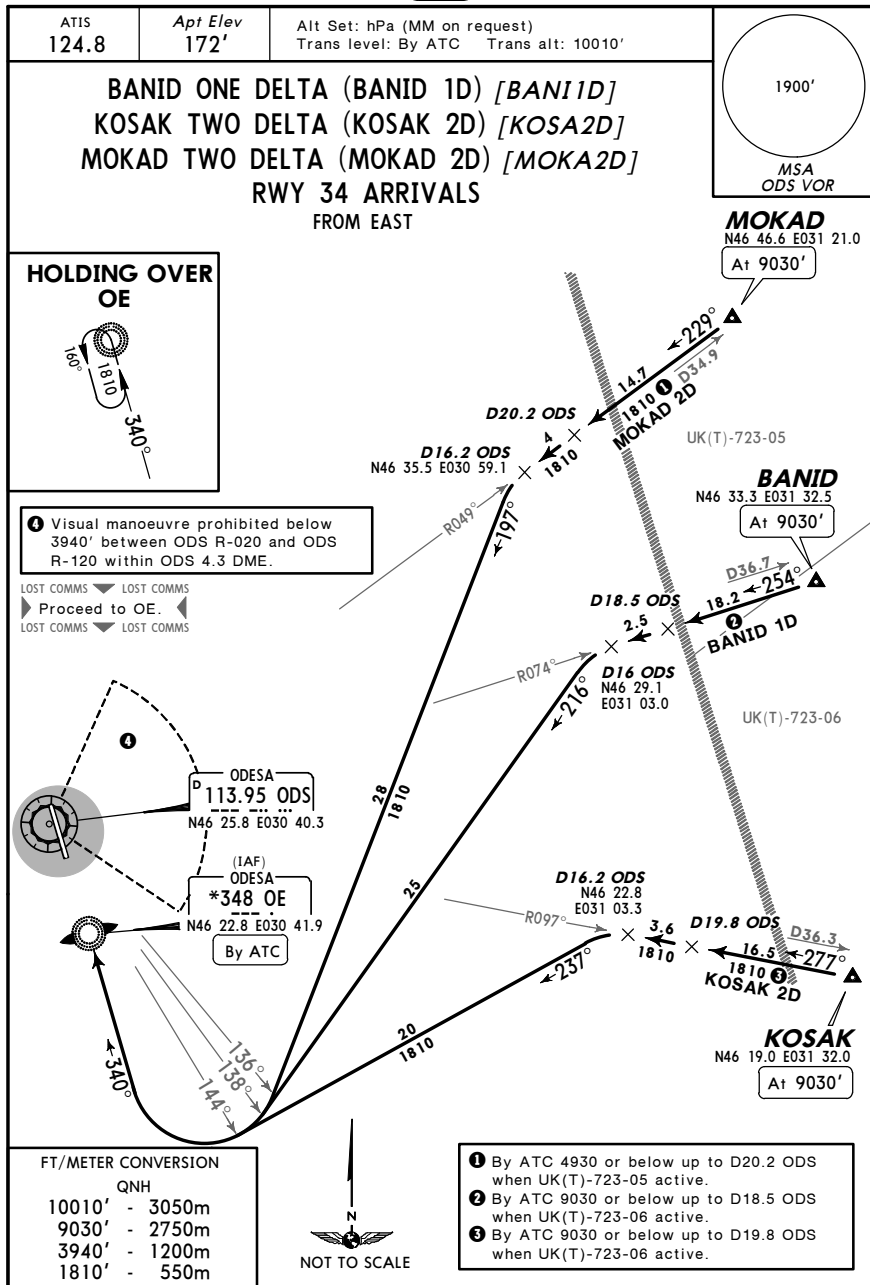
ODESA, UKRAINE
STAR



UKOO/ODS
 ODESA

JEPPesen
 26 OCT 07 (10-2C)

ODESA, UKRAINE
 STAR

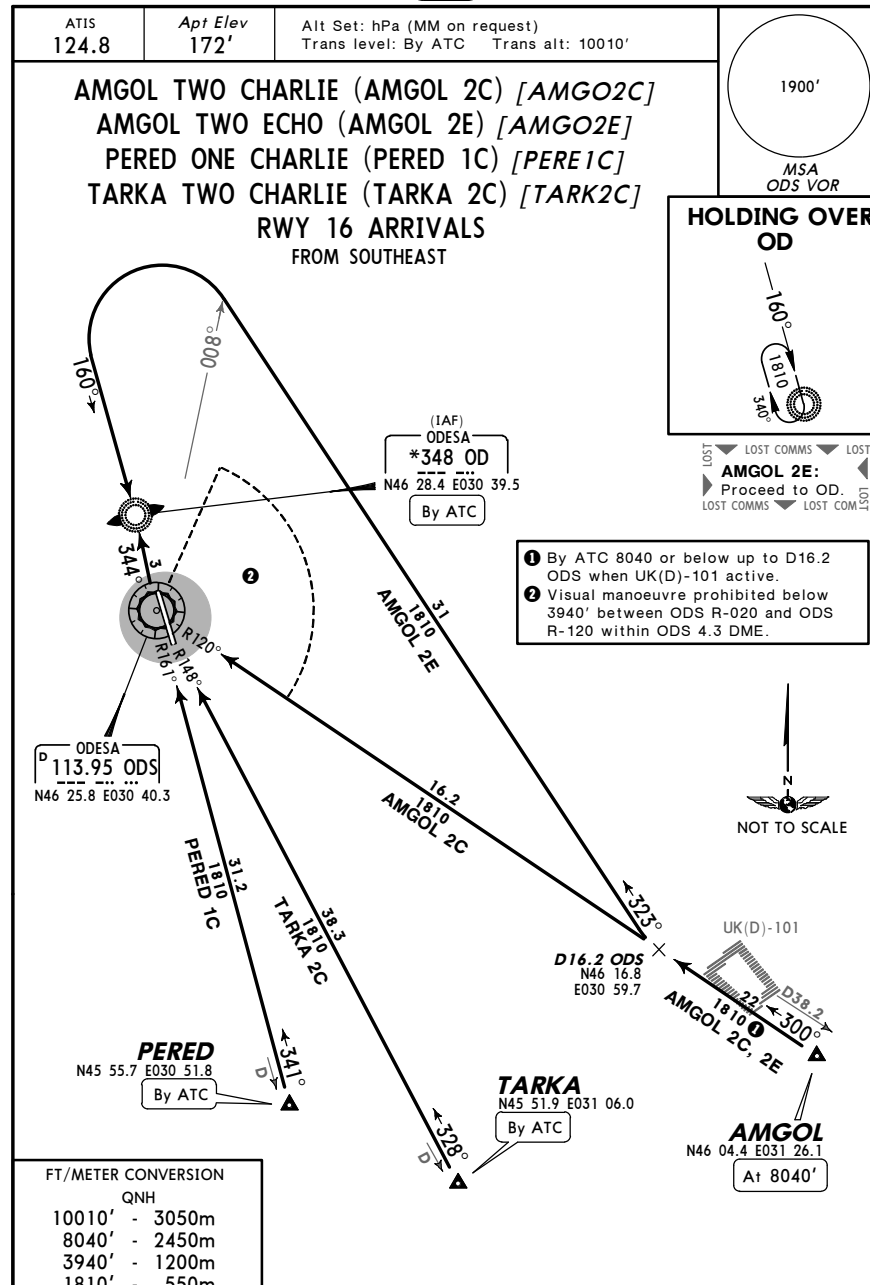


STAR	ROUTING
BANID 1D	On 254° track (ODS R-074 inbound) to D16 ODS, turn LEFT, 216° track, at ODS R-138 turn RIGHT for final approach.
KOSAK 2D	On 277° track (ODS R-097 inbound) to D16.2 ODS, turn LEFT, 237° track, at ODS R-144 turn RIGHT for final approach.
MOKAD 2D	On 229° track (ODS R-049 inbound) to D16.2 ODS, turn LEFT, 197° track, at ODS R-136 turn RIGHT for final approach.

UKOO/ODS
 ODESA

JEPPesen
 26 OCT 07 (10-2D)

ODESA, UKRAINE
 STAR

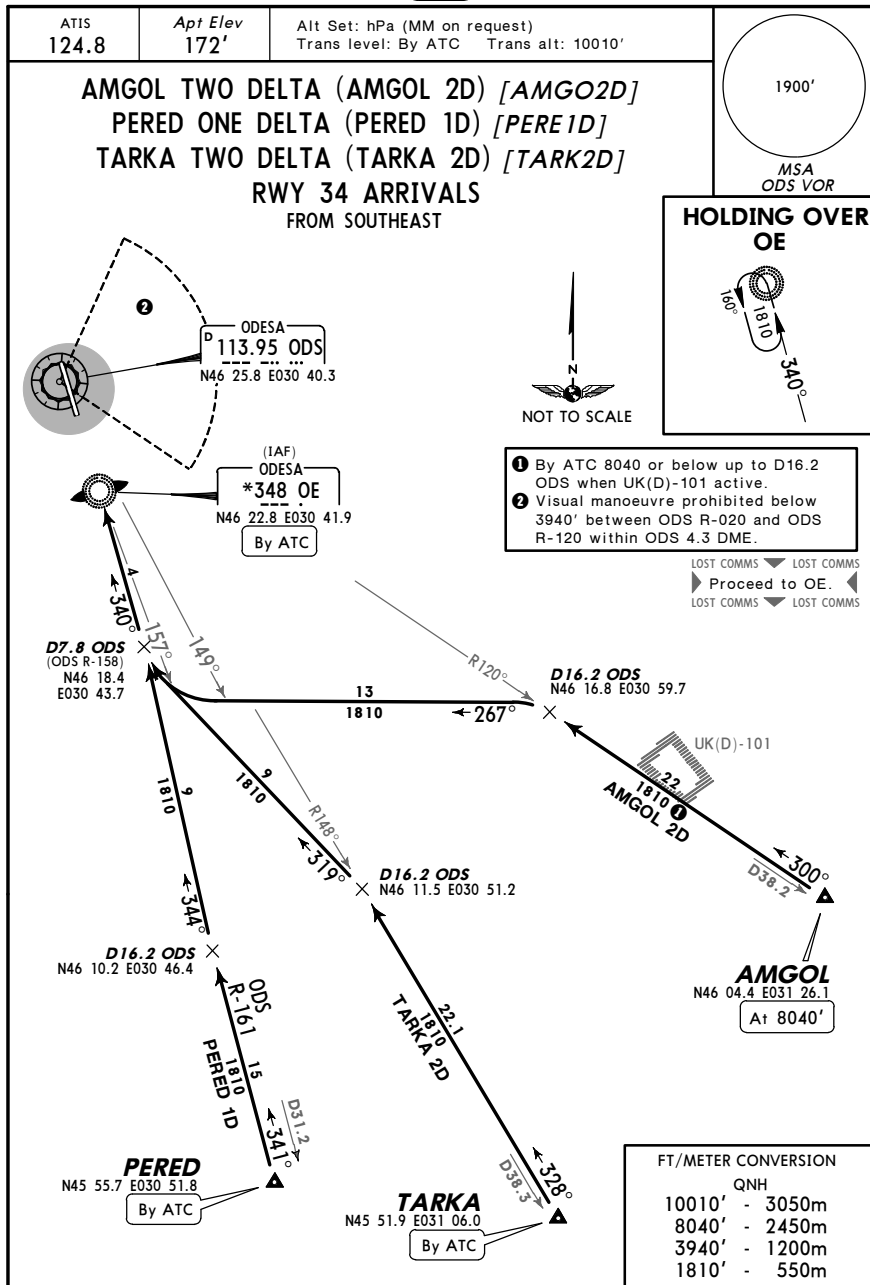


STAR	ROUTING
AMGOL 2C	On 300° track (ODS R-120 inbound) to ODS, turn RIGHT, ODS R-344 to OD.
AMGOL 2E	On 300° track (ODS R-120 inbound) to D16.2 ODS, turn RIGHT, 323° track, at ODS R-008 turn LEFT for final approach.
PERED 1C	On 341° track (ODS R-161 inbound) to ODS, ODS R-344 to OD.
TARKA 2C	On 328° track (ODS R-148 inbound) to ODS, turn RIGHT, ODS R-344 to OD.

UK00/ODS
 ODESA

JEPPesen
 26 OCT 07 (10-2E)

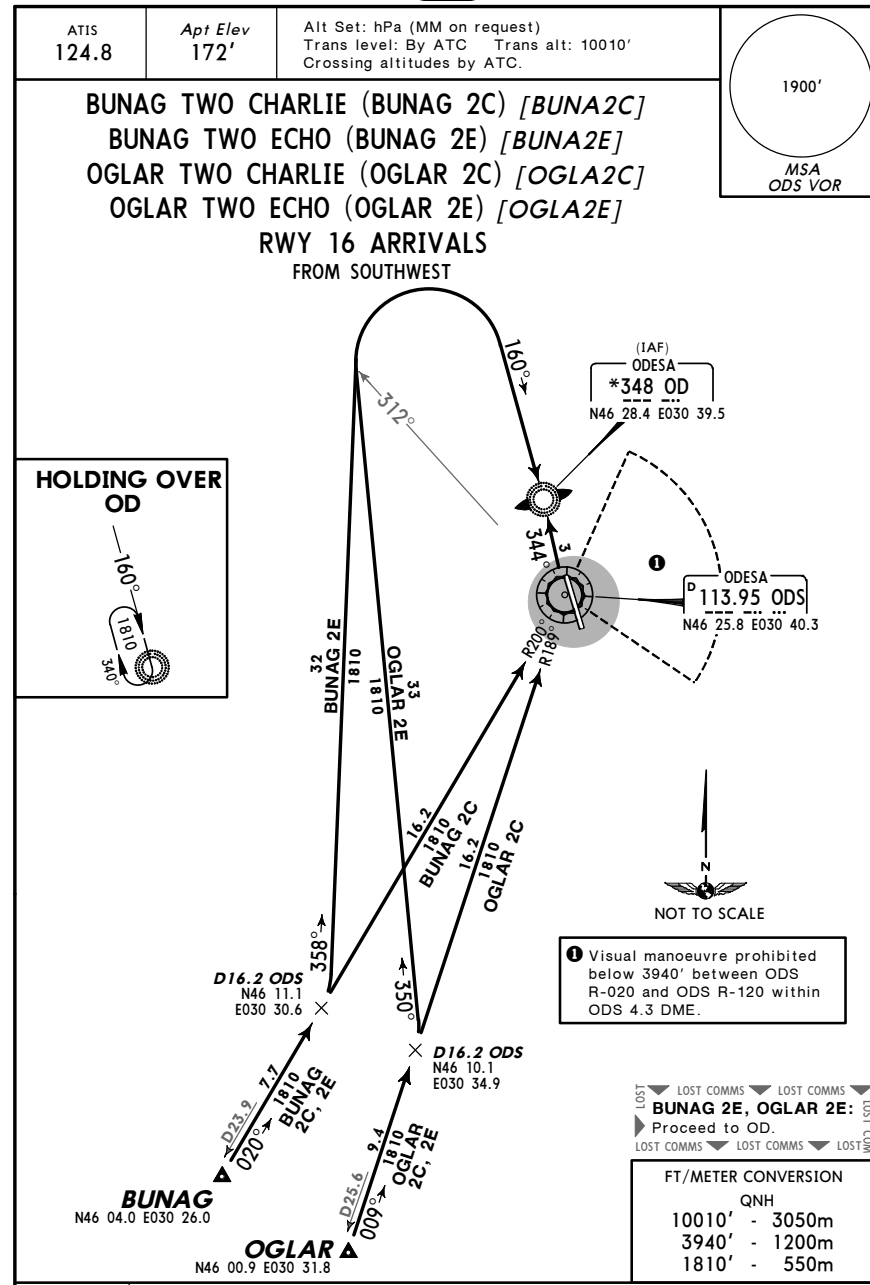
ODESA, UKRAINE
 STAR



UK00/ODS
 ODESA

JEPPesen
 26 OCT 07 (10-2E)

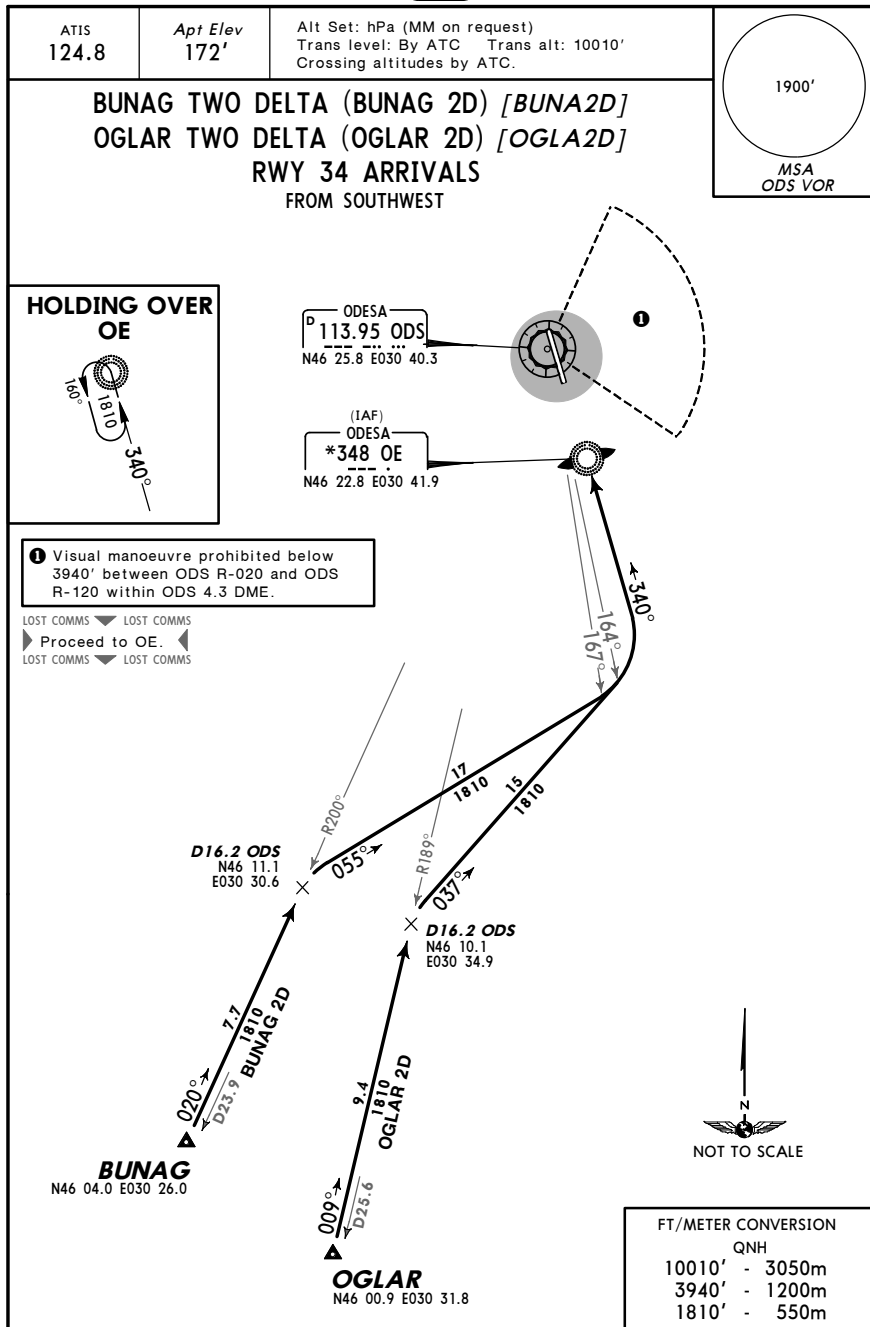
ODESA, UKRAINE
 STAR



UKOO/ODS
 ODESA

JEPPesen
 26 OCT 07 (10-2G)

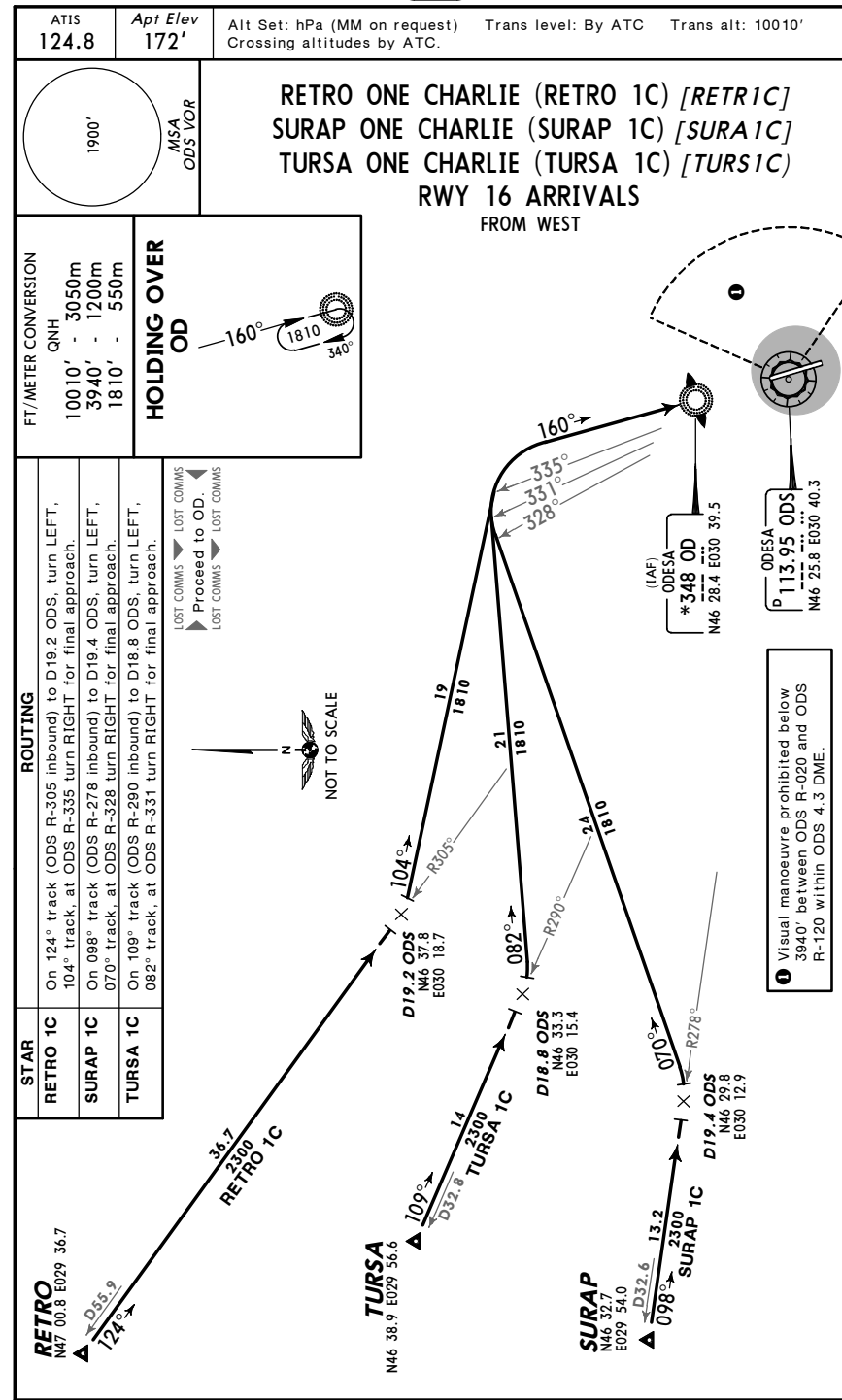
ODESA, UKRAINE
STAR



UKOO/ODS
 ODESA

JEPPesen
 26 OCT 07 (10-2H)

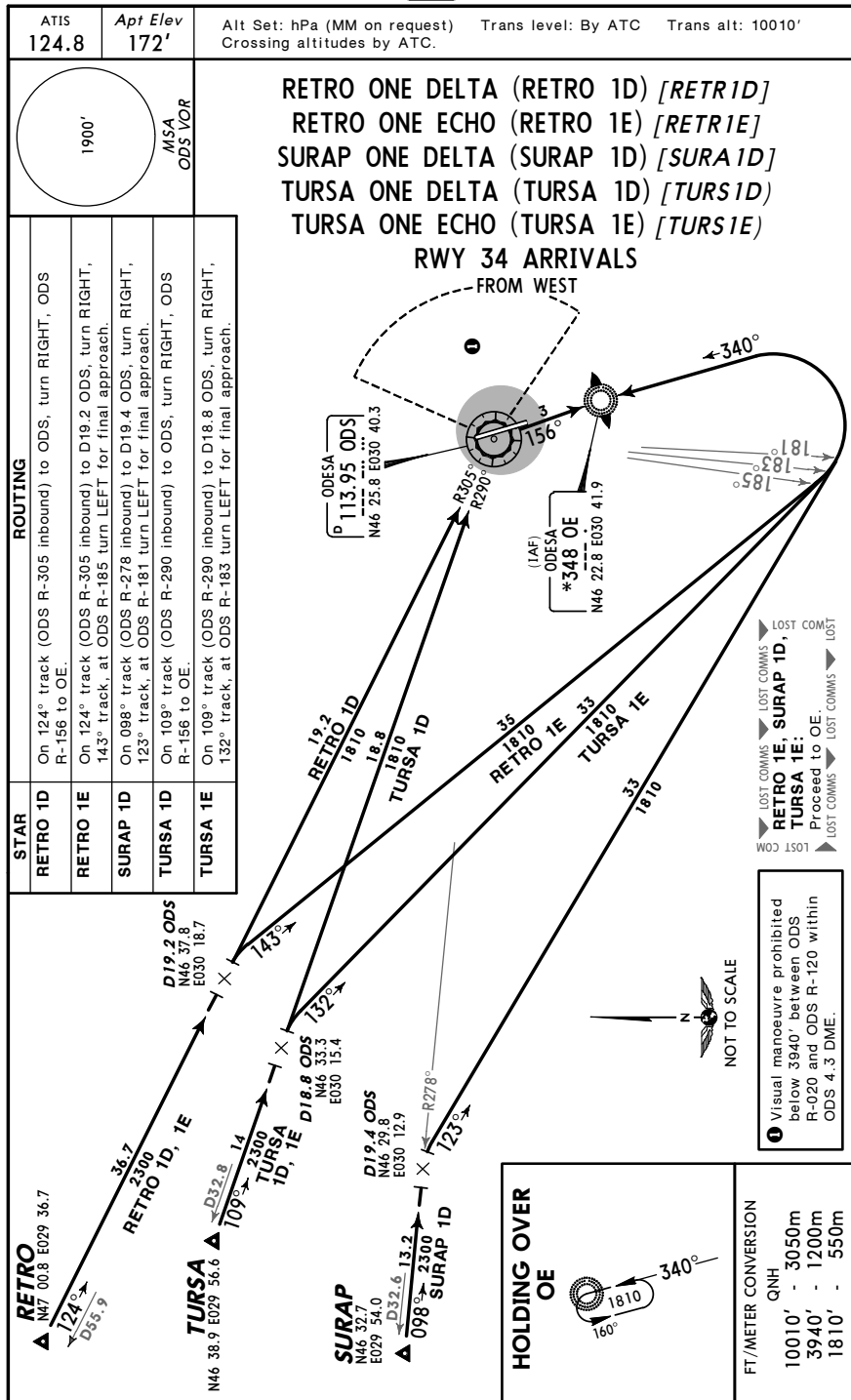
ODESA, UKRAINE
STAR



UK00/ODS
 ODESA

JEPPesen
 26 OCT 07 (10-2J)

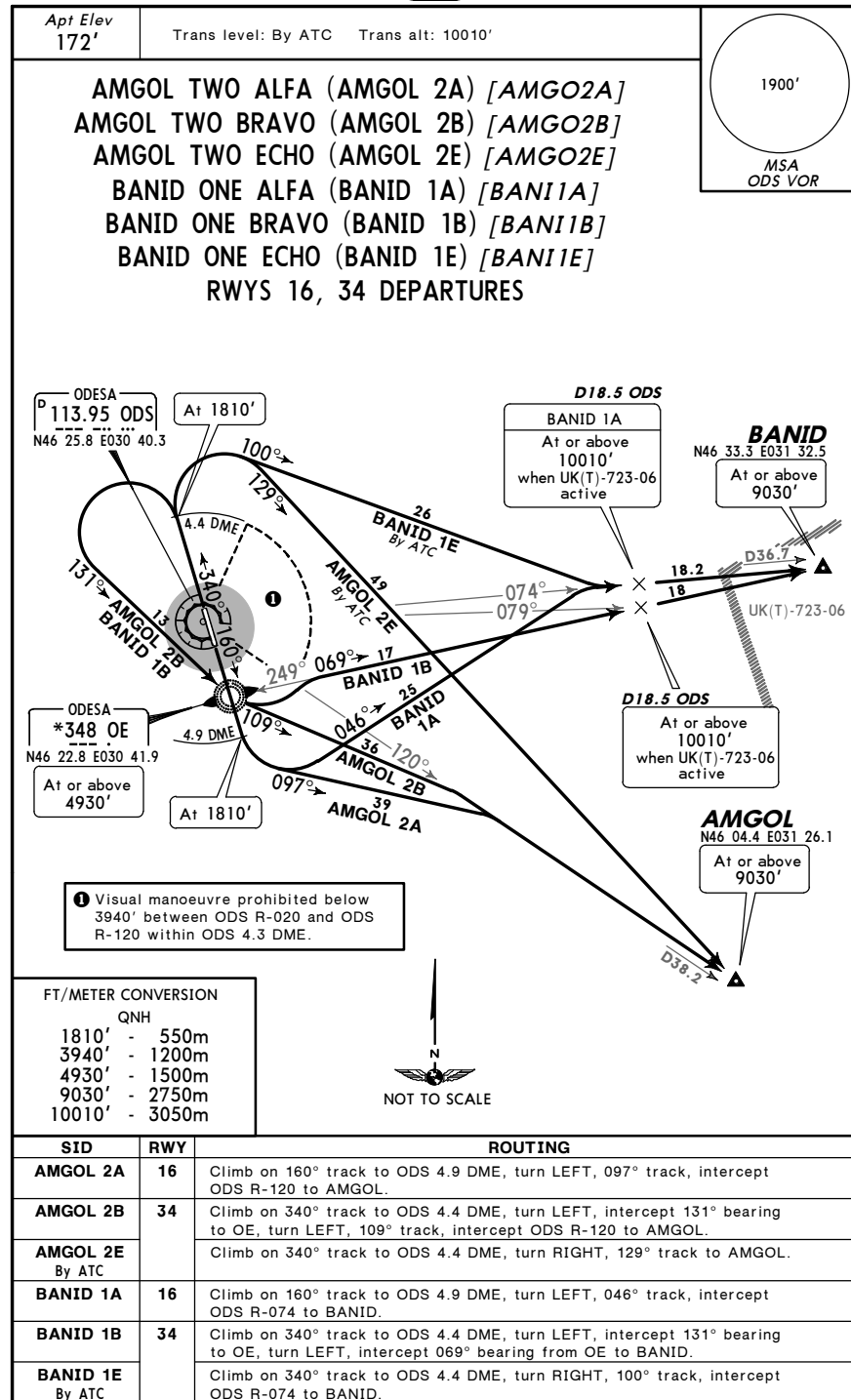
ODESA, UKRAINE
 STAR



UK00/ODS
 ODESA

JEPPesen
 26 OCT 07 (10-3)

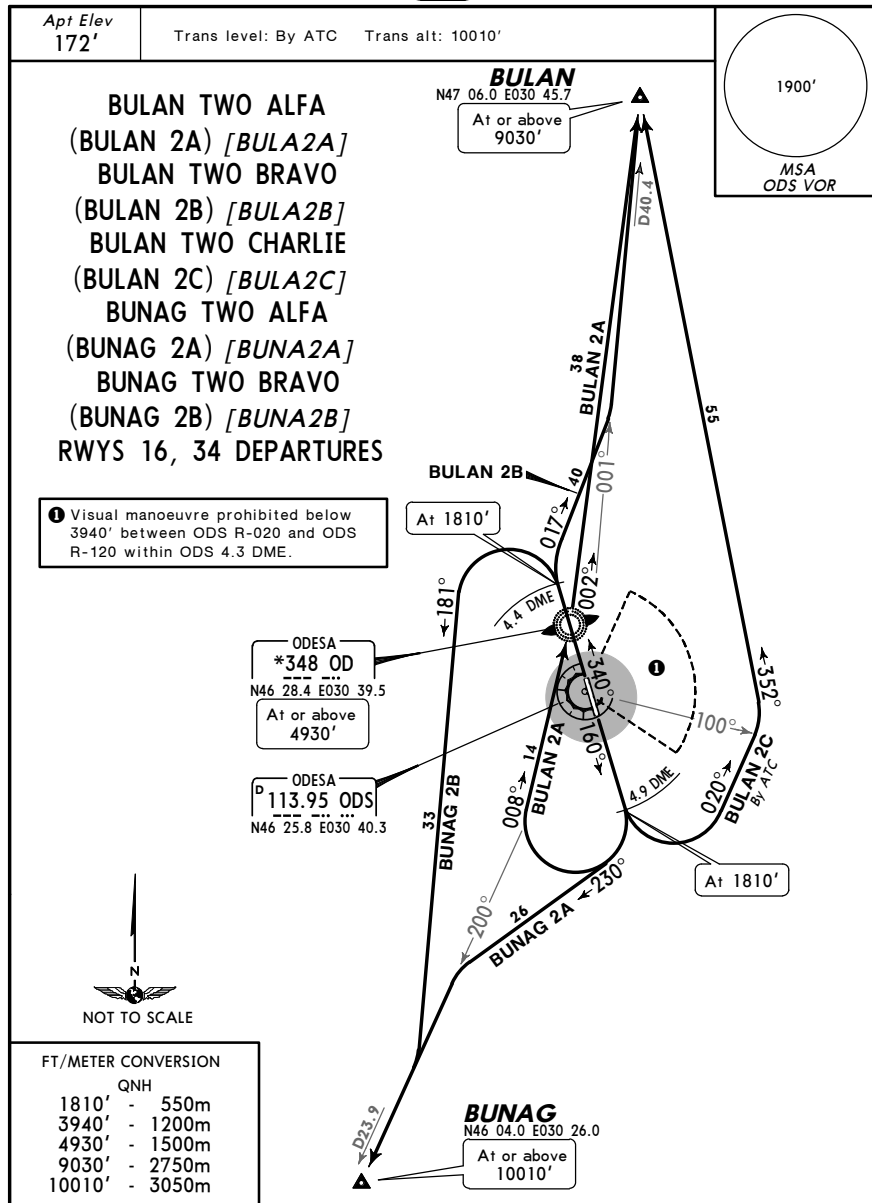
ODESA, UKRAINE
 SID



UKOO/ODS
 ODESA

JEPPesen
 26 OCT 07 (10-3A)

ODESA, UKRAINE
SID

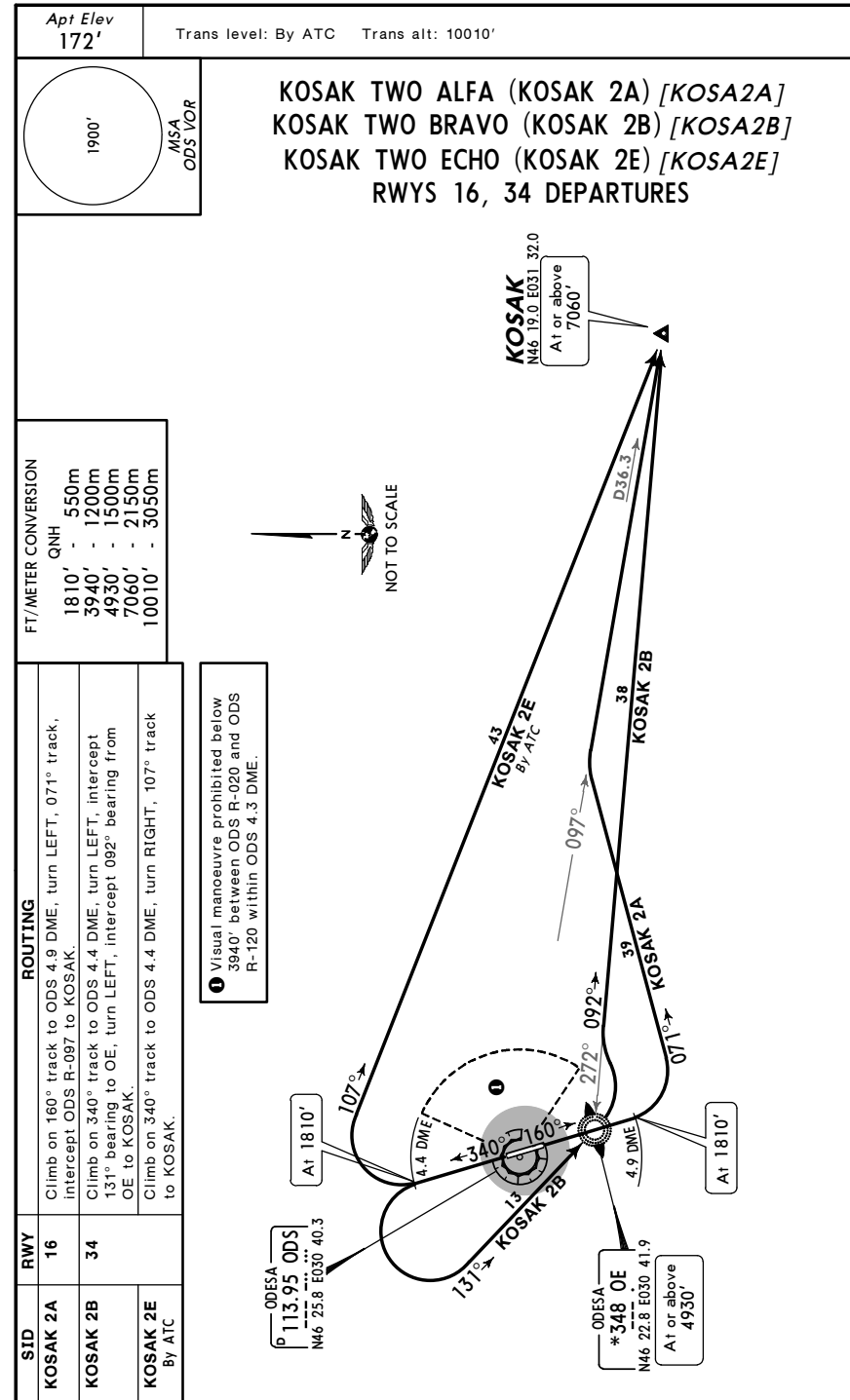


SID	RWY	ROUTING
BULAN 2A	16	Climb on 160° track to ODS 4.9 DME, turn RIGHT, intercept 008° bearing to OD, turn LEFT, 002° bearing to BULAN.
BULAN 2B	34	Climb on 340° track to ODS 4.4 DME, turn RIGHT, 017° track, intercept ODS R-001 to BULAN.
BULAN 2C	16	Climb on 160° track to ODS 4.9 DME, turn LEFT, 020° track, at ODS R-100 turn LEFT, 352° track to BULAN.
BUNAG 2A		Climb on 160° track to ODS 4.9 DME, turn RIGHT, 230° track, intercept ODS R-200 to BUNAG.
BUNAG 2B	34	Climb on 340° track to ODS 4.4 DME, turn LEFT, 181° track, intercept ODS R-200 to BUNAG.

UKOO/ODS
 ODESA

JEPPesen
 26 OCT 07 (10-3B)

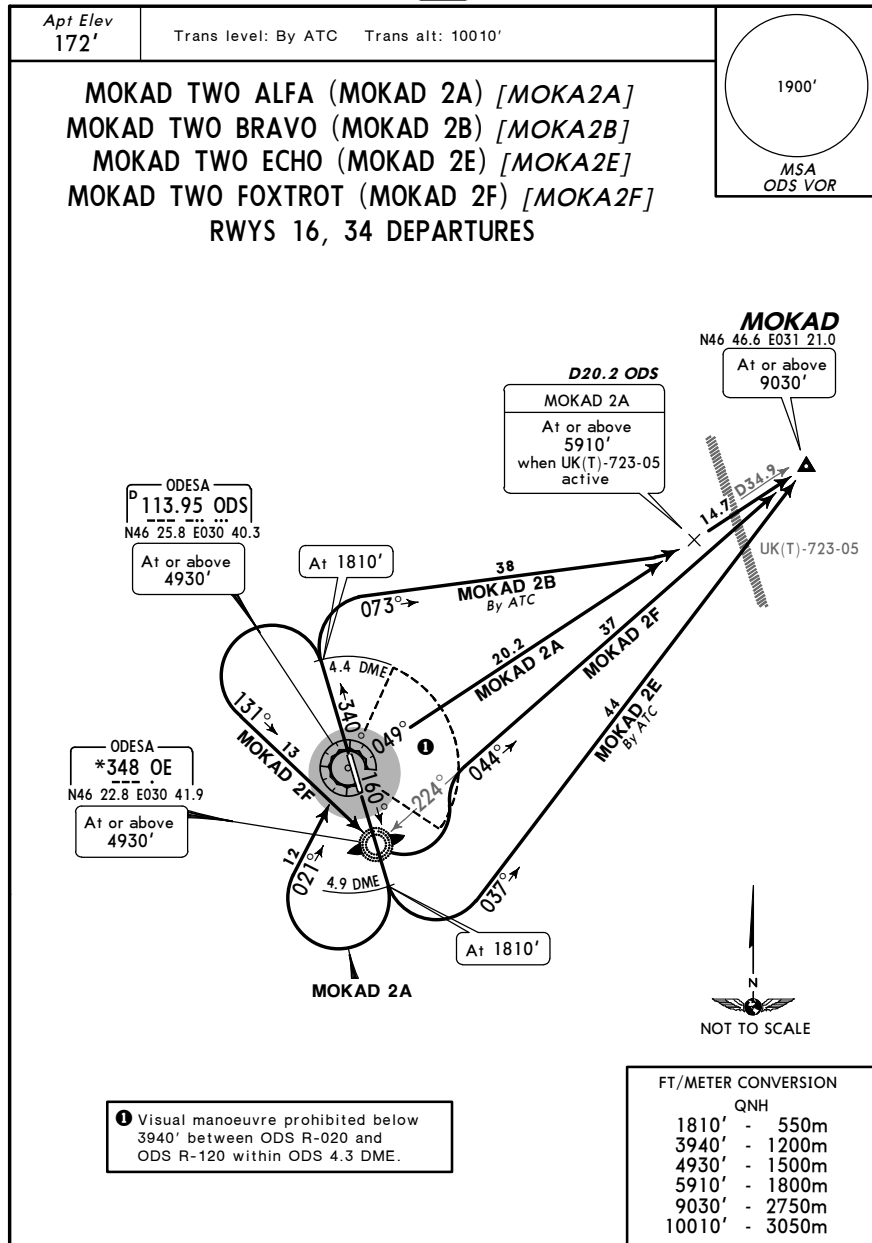
ODESA, UKRAINE
SID



UK00/ODS
 ODESA

JEPPESEN
 26 OCT 07 **(10-3C)**

ODESA, UKRAINE
SID

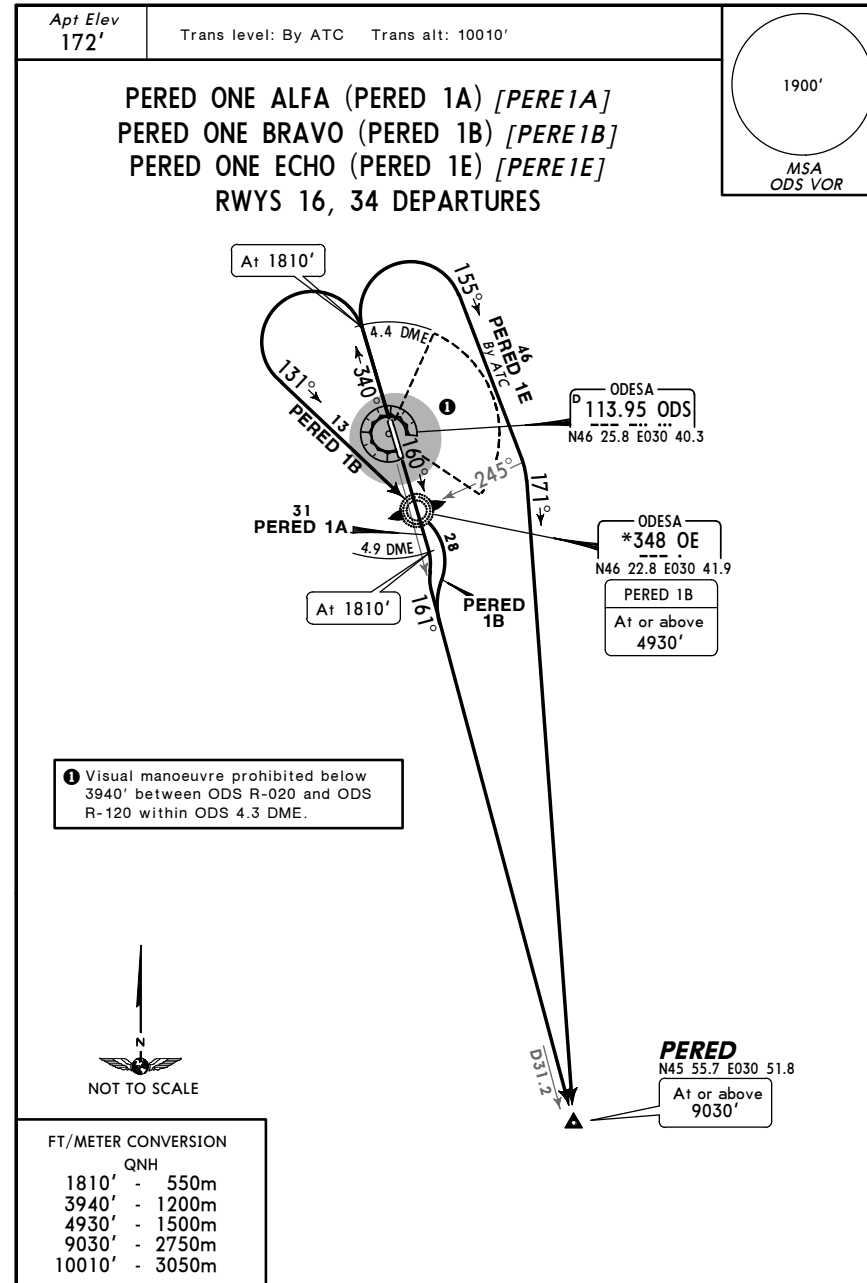


SID	RWY	ROUTING
MOKAD 2A	16	Climb on 160° track to ODS 4.9 DME, turn RIGHT, 021° track to ODS, turn RIGHT, ODS R-049 to MOKAD.
MOKAD 2B By ATC	34	Climb on 340° track to ODS 4.4 DME, turn RIGHT, 073° track, intercept ODS R-049 to MOKAD.
MOKAD 2E By ATC	16	Climb on 160° track to ODS 4.9 DME, turn LEFT, 037° track to MOKAD.
MOKAD 2F	34	Climb on 340° track to ODS 4.4 DME, turn LEFT, intercept 131° bearing to OE, turn LEFT, intercept 044° bearing from OE to MOKAD.

UK00/ODS
 ODESA

JEPPESEN
 26 OCT 07 **(10-3D)**

ODESA, UKRAINE
SID

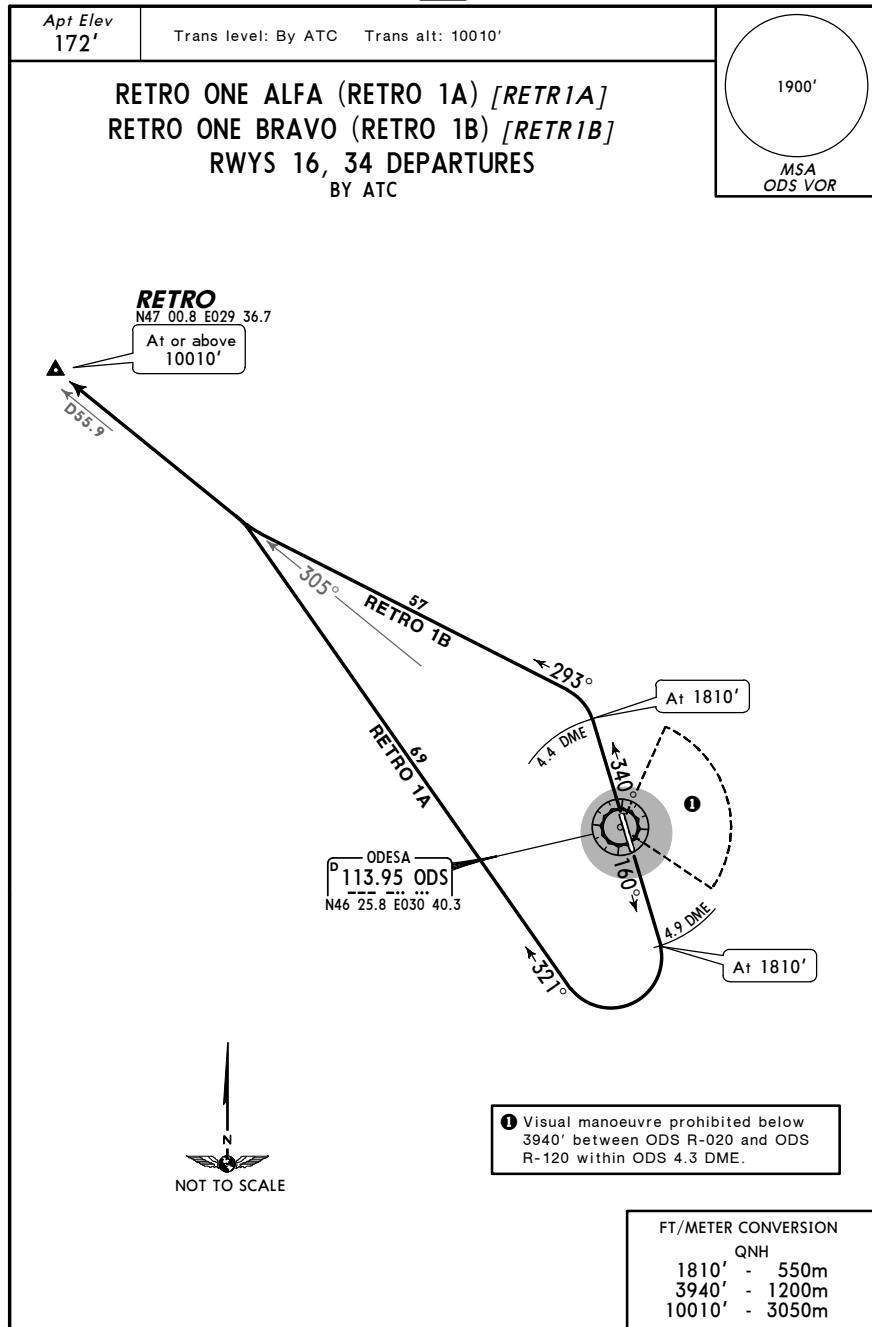


SID	RWY	ROUTING
PERED 1A	16	Climb on 160° track to ODS 4.9 DME, turn RIGHT, intercept ODS R-161 to PERED.
PERED 1B	34	Climb on 340° track to ODS 4.4 DME, turn LEFT, intercept 131° bearing to OE, intercept ODS R-161 to PERED.
PERED 1E By ATC		Climb on 340° track to ODS 4.4 DME, turn RIGHT, 155° track, at 245° bearing to OE turn RIGHT, 171° track to PERED.

UKOO/ODS
 ODESA

JEPPESEN
 26 OCT 07 (10-3E)

ODESA, UKRAINE
 SID

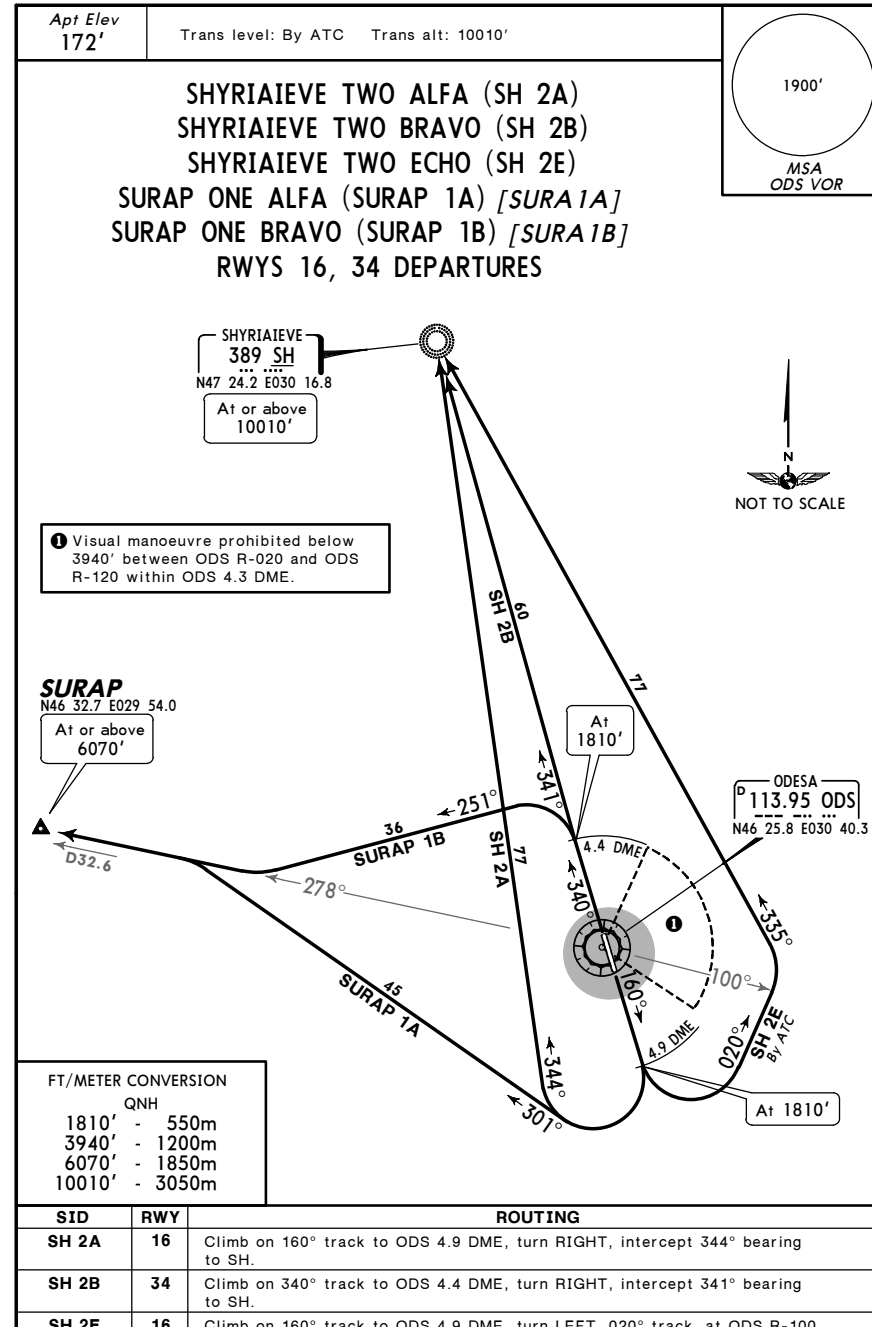


SID	RWY	ROUTING
RETRO 1A	16	Climb on 160° track to ODS 4.9 DME, turn RIGHT, 321° track, intercept ODS R-305 to RETRO.
RETRO 1B	34	Climb on 340° track to ODS 4.4 DME, turn LEFT, 293° track, intercept ODS R-305 to RETRO.

UKOO/ODS
 ODESA

JEPPESEN
 26 OCT 07 (10-3F)

ODESA, UKRAINE
 SID

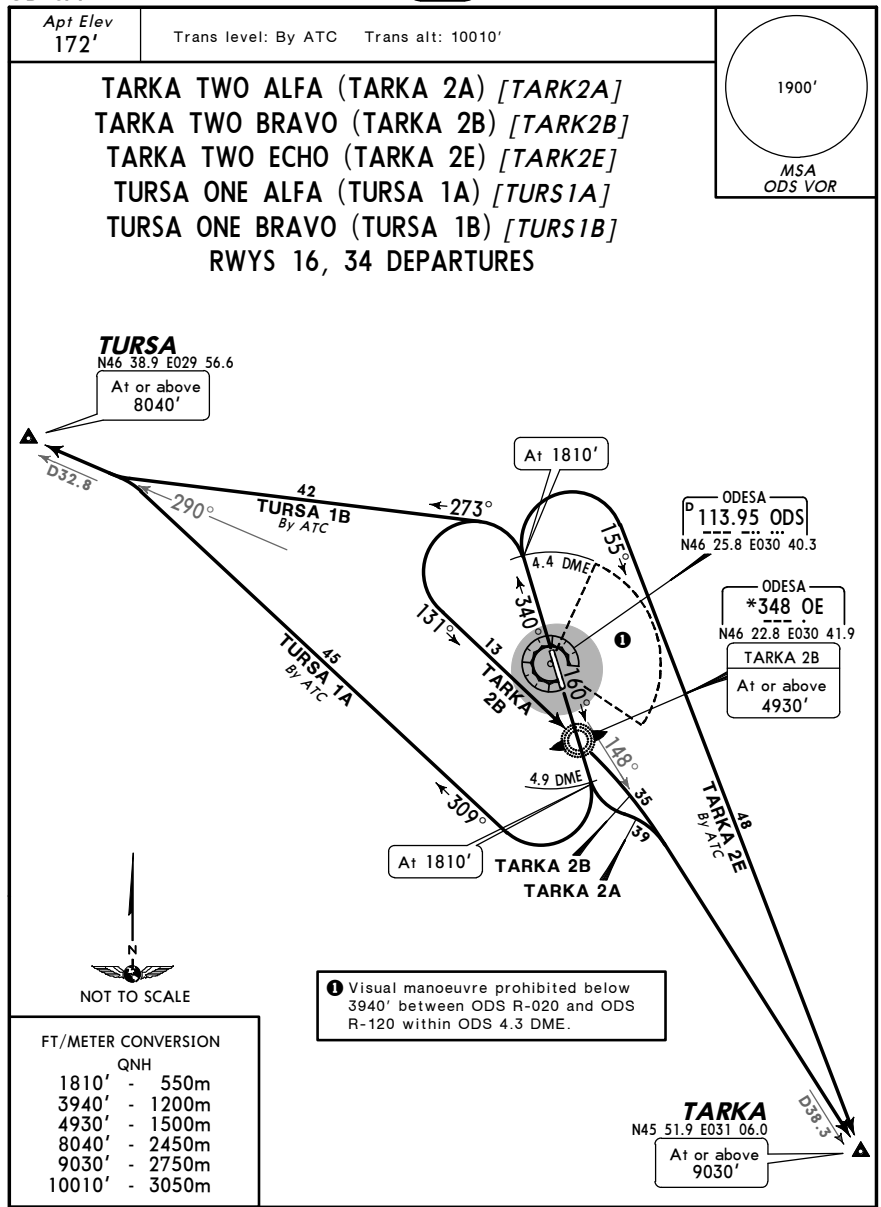


SID	RWY	ROUTING
SH 2A	16	Climb on 160° track to ODS 4.9 DME, turn RIGHT, intercept 344° bearing to SH.
SH 2B	34	Climb on 340° track to ODS 4.4 DME, turn RIGHT, intercept 341° bearing to SH.
SH 2E	16	Climb on 160° track to ODS 4.9 DME, turn LEFT, 020° track, at ODS R-100 turn LEFT, intercept 335° bearing to SH.
SURAP 1A		Climb on 160° track to ODS 4.9 DME, turn RIGHT, 301° track, intercept ODS R-278 to SURAP.
SURAP 1B	34	Climb on 340° track to ODS 4.4 DME, turn LEFT, 251° track, intercept ODS R-278 to SURAP.

UKOO/ODS
 ODESA

JEPPESEN
 26 OCT 07 (10-3G)

ODESA, UKRAINE
 SID

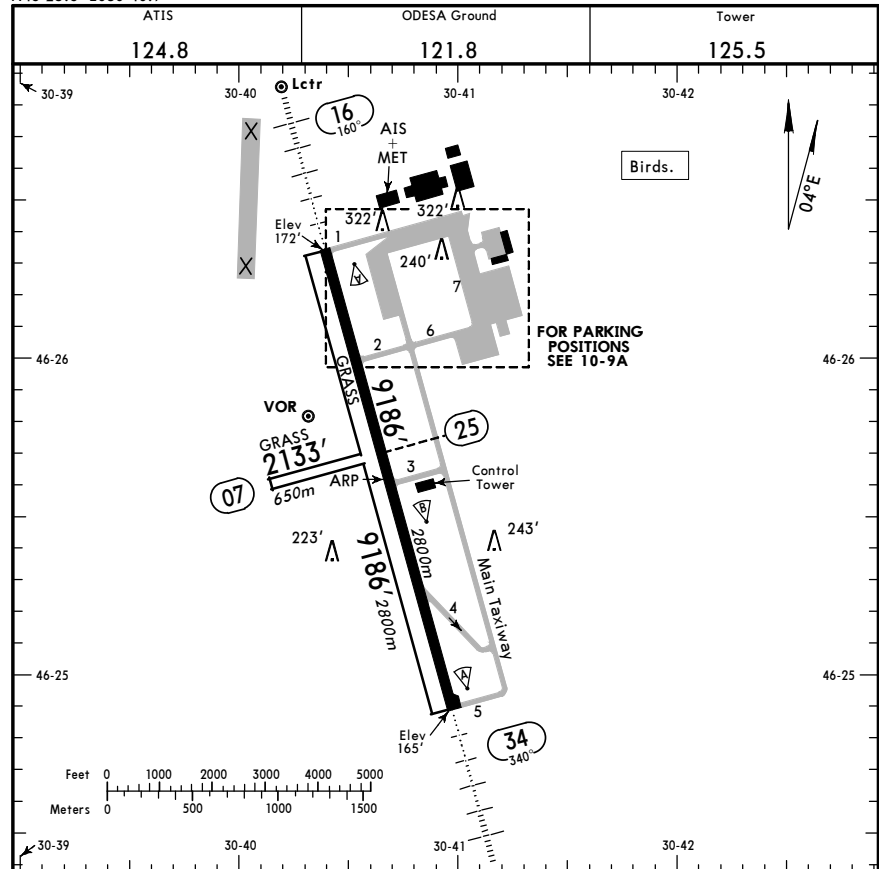


SID	RWY	ROUTING
TARKA 2A	16	Climb on 160° track to ODS 4.9 DME, turn LEFT, intercept ODS R-148 to TARKA.
TARKA 2B	34	Climb on 340° track to ODS 4.4 DME, turn LEFT, intercept 131° bearing to OE, intercept ODS R-148 to TARKA.
TARKA 2E By ATC		Climb on 340° track to ODS 4.4 DME, turn RIGHT, 155° track to TARKA.
TURSA 1A By ATC	16	Climb on 160° track to ODS 4.9 DME, turn RIGHT, 309° track, intercept ODS R-290 to TURSA.
TURSA 1B By ATC	34	Climb on 340° track to ODS 4.4 DME, turn LEFT, 273° track, intercept ODS R-290 to TURSA.

UKOO/ODS
 Apt Elev 172'
 N46 25.6 E030 40.7

JEPPESEN
 7 JUL 06 (10-9)

ODESA, UKRAINE
 ODESA



RWY	Landing Beyond	USABLE LENGTHS		
		Threshold	Glide Slope	TAKE-OFF
07	25			197' 60m
16	34	HIRL (50m) HIALS	RVR	8235' 2510m 8760' 2670m①
16	34	Grass runway		328' 100m

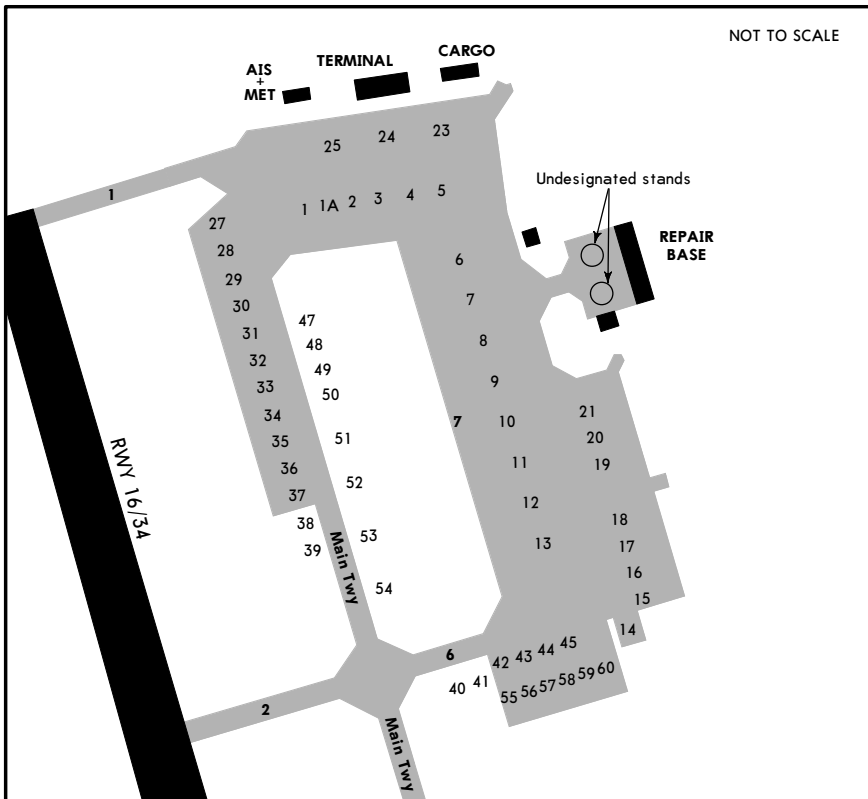
① First 427'/130m unusable for take-off.

A	TAKE-OFF	
	AIR CARRIER (JAA) Main rwy 16/34	
B	LVP must be in force RCLM (DAY only) or RL	RCLM (DAY only) or RL
C	250m	400m
D	300m	

UK00/ODS

JEPPESSEN
 7 JUL 06 (10-9A)

ODESA, UKRAINE
 ODESA



Taxiing is strictly along centerline with inner engines power.
 Engine run-up at all stands prohibited except for stand 14.
 Stands 38, 39 and 50 thru 54 available for helicopters.

UK00/ODS

JEPPESSEN
 14 APR 06 (10-9X)

JAA MINIMUMS
 ODESA, UKRAINE
 ODESA

STRAIGHT-IN RWY		A	B	C	D
16	ILS	372' (200')	372' (200')	372' (200')	372' (200')
		R550m	R550m	R550m	R550m
	ALS out	R1000m	R1000m	R1000m	R1000m
	LOC	NOT AUTHORIZED			
2 NDB		510' (338')	510' (338')	510' (338')	510' (338')
		R900m	R1000m	R1000m	R1400m
	ALS out	R1500m	R1500m	R1800m	R2000m
34	ILS	365' (200')	365' (200')	365' (200')	365' (200')
		R550m	R550m	R550m	R550m
	ALS out	R1000m	R1000m	R1000m	R1000m
	LOC	NOT AUTHORIZED			
2 NDB		500' (335')	500' (335')	500' (335')	500' (335')
		R900m	R1000m	R1000m	R1400m
	ALS out	R1500m	R1500m	R1800m	R2000m

CIRCLE-TO-LAND ①	100 KT	135 KT	180 KT	205 KT
after apch to rwy 16	580' (408')	680' (508')	780' (608')	880' (708')
	V1500m	V1600m	V2400m	V3600m
after apch to rwy 34	580' (415')	680' (515')	780' (615')	880' (715')
	V1500m	V1600m	V2400m	V3600m

① Prohibited in sector R-020 to R-120 ODS.

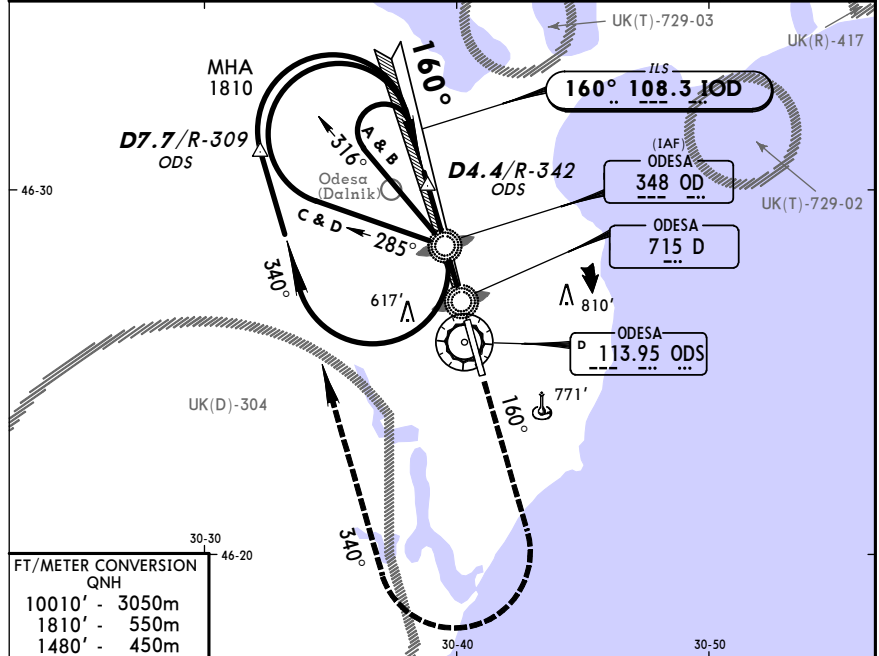
TAKE-OFF RWY 16, 34

LVP must be in Force		
RCLM (DAY only) or RL	RCLM (DAY only) or RL	NIL (DAY only)
A	400m	500m
B		
C		
D		

UK00/ODS **JEPPESEN** **ODESA, UKRAINE**
 ODESА ILS Rwy 16

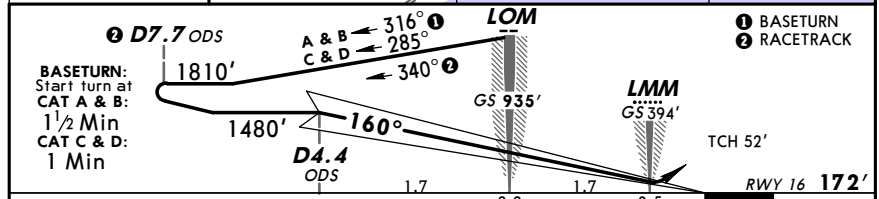
26 OCT 07 (11-1)

ATIS 124.8		ODESA Radar (APP) 120.9 127.7		ODESA Tower 125.5	Ground 121.8
LOC IOD 108.3	Final Apch Crs 160°	GS LOM 935' (763')	ILS DA(H) 372' (200')	Apt Elev RWY 172'	1900'
MISSED APCH: Climb on 160° to 1810', then turn RIGHT on 340°, then according to chart.					
Alt Set: hPa (MM on req) Rwy Elev: 6 hPa Trans level: By ATC Trans alt: 10010'					MSA ODS VOR



FT/METER CONVERSION
 QNH

10010'	-	3050m
1810'	-	550m
1480'	-	450m



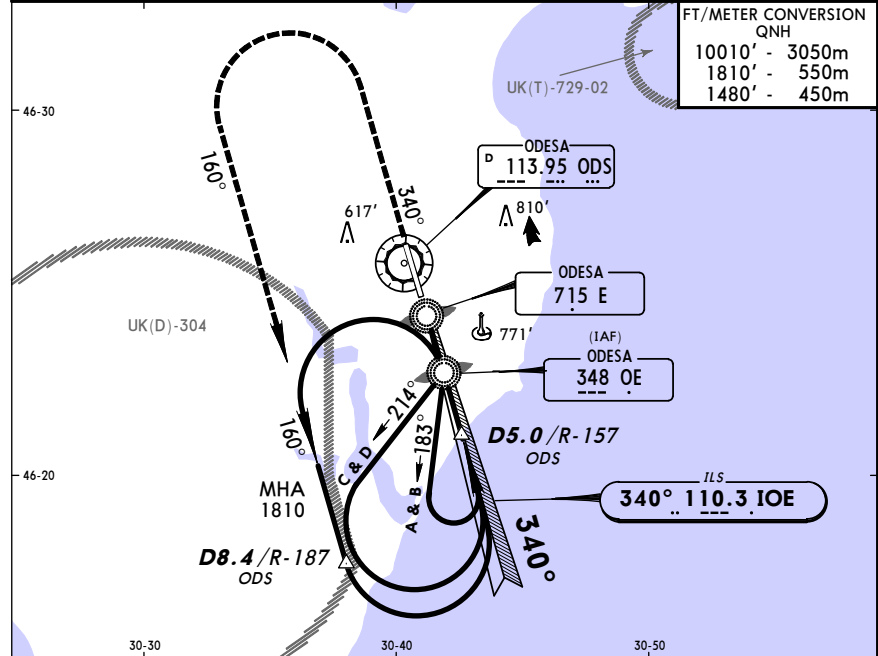
Gnd speed-Kts	70	90	100	120	140	160	HIALS	1810'	on 160°
Gs	3.00°	377	485	539	647	755			

STRAIGHT-IN LANDING RWY 16			CIRCLE-TO-LAND	
ILS DA(H) 372' (200')			Prohibited in sector R-020 to R-120 ODS	
FULL ALS out			LOC (GS out)	
PANS OPS	A	RVR 720m VIS 800m	100	1600m
	B		135	1600m
	C		180	2400m
	D		205	3600m
NOT AUTH			NOT AUTH	

UK00/ODS **JEPPESEN** **ODESA, UKRAINE**
 ODESА ILS Rwy 34

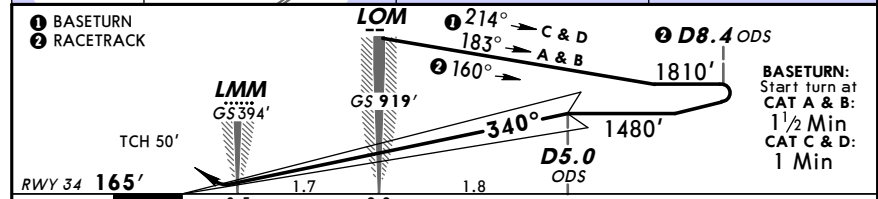
26 OCT 07 (11-2)

ATIS 124.8		ODESA Radar (APP) 120.9 127.7		ODESA Tower 125.5	Ground 121.8
LOC IOE 110.3	Final Apch Crs 340°	GS LOM 919' (754')	ILS DA(H) 365' (200')	Apt Elev RWY 165'	1900'
MISSED APCH: Climb on 340° to 1810', then turn LEFT on 160°, then according to chart.					
Alt Set: hPa (MM on req) Rwy Elev: 6 hPa Trans level: By ATC Trans alt: 10010'					MSA ODS VOR



FT/METER CONVERSION
 QNH

10010'	-	3050m
1810'	-	550m
1480'	-	450m



Gnd speed-Kts	70	90	100	120	140	160	HIALS	1810'	on 340°
Gs	3.00°	377	485	539	647	755			

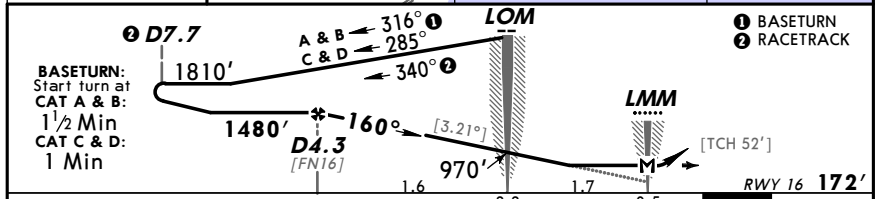
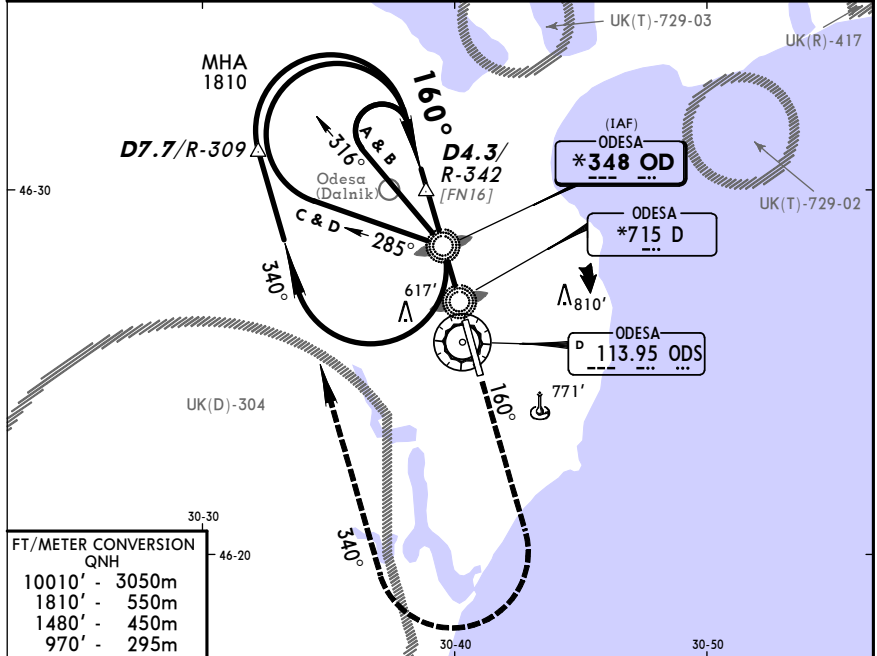
STRAIGHT-IN LANDING RWY 34			CIRCLE-TO-LAND	
ILS DA(H) 365' (200')			Prohibited in sector R-020 to R-120 ODS	
FULL ALS out			LOC (GS out)	
PANS OPS	A	RVR 720m VIS 800m	100	1600m
	B		135	1600m
	C		180	2400m
	D		205	3600m
NOT AUTH			NOT AUTH	

UK00/ODS ODESA 26 OCT 07 (16-1) ODESA, UKRAINE 2 NDB Rwy 16

ATIS		ODESA Approach		ODESA Precision	ODESA Tower	Ground
124.8		120.9	127.7	125.5	125.5	121.8
NDB OD *348	Final Apch Crs 160°	Minimum Alt D4.3 1480' (1308')	MDA(H) 510' (338')	Apt Elev 172' RWY 172'	1900'	

MISSED APCH: Climb on 160° to 1810', then turn RIGHT on 340°, then according to chart.

Alt Set: hPa (MM on req) Rwy Elev: 6 hPa Trans level: By ATC Trans alt: 10010' MSA ODS VOR



Gnd speed-Kts	70	90	100	120	140	160	HIALS 1810' ↑ on 160°
Descent gradient 5.61% or Descent angle [3.21°]	398	511	568	682	795	909	

MAP at LMM

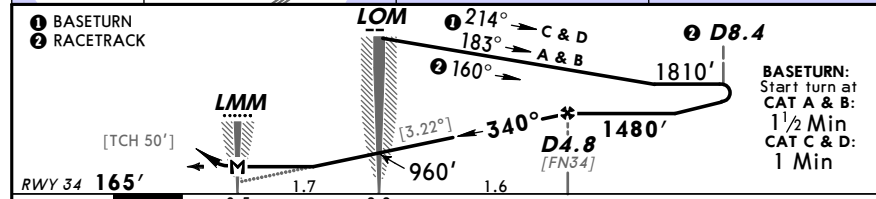
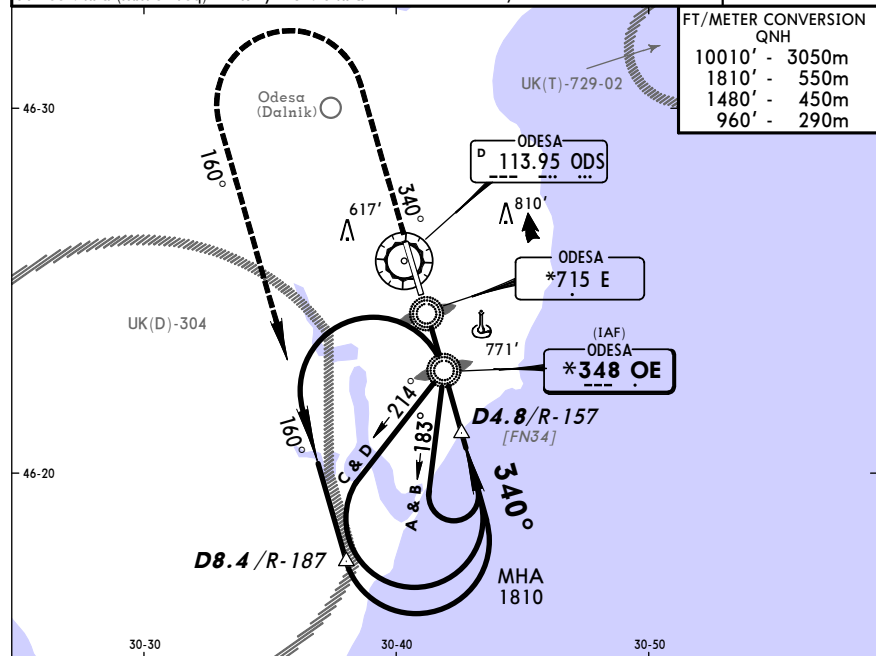
STRAIGHT-IN LANDING RWY 16			CIRCLE-TO-LAND		
MDA(H) 510' (338')			Prohibited in sector R-020 to R-120		
A	1200m	ALS out	Max Kts	MDA(H)	
B		RVR 1500m VIS 1600m	100	570' (398')	1600m
C			135	670' (498')	1600m
D			180	770' (598')	2400m
		205	870' (698')	3600m	

UK00/ODS ODESA 26 OCT 07 (16-2) ODESA, UKRAINE 2 NDB Rwy 34

ATIS		ODESA Approach		ODESA Precision	ODESA Tower	Ground
124.8		120.9	127.7	125.5	125.5	121.8
NDB OE *348	Final Apch Crs 340°	Minimum Alt D4.8 1480' (1315')	MDA(H) 500' (335')	Apt Elev 172' RWY 165'	1900'	

MISSED APCH: Climb on 340° to 1810', then turn LEFT on 160°, then according to chart.

Alt Set: hPa (MM on req) Rwy Elev: 6 hPa Trans level: By ATC Trans alt: 10010' MSA ODS VOR



Gnd speed-Kts	70	90	100	120	140	160	HIALS 1810' ↑ on 340°
Descent gradient 5.63% or Descent angle [3.22°]	399	513	570	684	798	912	

MAP at LMM

STRAIGHT-IN LANDING RWY 34			CIRCLE-TO-LAND		
MDA(H) 500' (335')			Prohibited in sector R-020 to R-120		
A	1200m	ALS out	Max Kts	MDA(H)	
B		RVR 1500m VIS 1600m	100	570' (405')	1600m
C			135	670' (505')	1600m
D			180	770' (605')	2400m
		205	870' (705')	3600m	

■ Circling height based on rwy 34 thresh elev of 165'.